



August 1994
The Labour Force
New South Wales and
Australian Capital Territory

Catalogue No. 6201.1

A thick, black, horizontal bar with tapered ends, located at the bottom of the page.

EMBARGOED UNTIL 11.30 A.M. 4 NOVEMBER 1994

**THE LABOUR FORCE
NEW SOUTH WALES AND
AUSTRALIAN CAPITAL TERRITORY
August 1994**

GREG BRAY
Deputy Commonwealth Statistician

© Commonwealth of Australia 1994

CONTENTS

		Page
	Summary of findings—	
..	New South Wales	1
..	Australian Capital Territory	4
 <i>Graphs</i>		
..	<i>Unemployment rate, New South Wales and Australia, August 1994</i>	1
..	<i>Monthly change in number of persons employed, New South Wales and Australia, August 1982 – August 1994</i>	1
..	<i>Unemployment rate, New South Wales and Australia, August 1982 – August 1994</i>	1
..	<i>Unemployment rate, Regions of New South Wales, August 1994</i>	2
..	<i>Average duration of unemployment, New South Wales, August 1992 – August 1994</i>	3
..	<i>Employed persons, Australian Capital Territory, August 1982 – August 1994</i>	4
..	<i>Unemployment rate, Australian Capital Territory and Australia, August 1982 – August 1994</i>	4
..	<i>Unemployment rate by age, Australian Capital Territory, August 1992 – August 1994</i>	4
..	<i>Average duration of unemployment, Australian Capital Territory, August 1992 – August 1994</i>	5
 NEW SOUTH WALES		
 LABOUR FORCE STATUS		
<i>Table</i>		
	Labour force status, New South Wales—	
1.	Original series	7
2.	Seasonally adjusted and trend series	8
3.	Age	10
4.	Aged 15–24 (single years) by full-time educational attendance	11
5.	Family status	12
 <i>Graphs</i>		
	Trend series, New South Wales, August 1982 – August 1994—	
..	<i>Employed males</i>	9
..	<i>Employed females</i>	9
..	<i>Unemployed males</i>	9
..	<i>Unemployed females</i>	9
..	<i>Male unemployment rate</i>	9
..	<i>Female unemployment rate</i>	9
..	<i>Male participation rate</i>	9
..	<i>Female participation rate</i>	9
	Persons aged 15–19 in the labour force, New South Wales: Full-time attendance at school or a tertiary educational institution, August 1992 – August 1994—	
..	<i>Employed</i>	10
..	<i>Unemployed</i>	10
 EMPLOYED PERSONS		
<i>Table</i>		
	Employed persons, New South Wales—	
6.	Status in employment	12
7.	Age	13
8.	Industry	14
9.	Occupation	16
 <i>Graphs</i>		
..	<i>Annual change in employment by age, New South Wales, August 1993 – August 1994</i>	13
..	<i>Employment by industry division, New South Wales, August 1994</i>	15
..	<i>Annual change in employment by occupation group, New South Wales, August 1993 – August 1994</i>	17

CONTENTS—*continued*

	<i>Page</i>
UNEMPLOYED PERSONS	
<i>Table</i>	
	Unemployed persons, New South Wales—
10.	Age 18
11.	Unemployment rate by age 18
12.	Industry and occupation of last full-time job 19
13.	Duration of unemployment 20
14.	Unemployment rate by birthplace and period of arrival 20
15.	Duration of unemployment by age 21
<i>Graphs</i>	
..	<i>Unemployment rate by age, New South Wales, August 1992 – August 1994</i> 19
..	<i>Unemployment rate by period of arrival of overseas born, New South Wales, August 1994</i> 20
REGIONAL DATA	
<i>Table</i>	
	Labour force status—
16.	Sydney Major Statistical Region 22
17.	Balance of New South Wales Major Statistical Region 23
18.	Regions of New South Wales 24
	Employed persons—
19.	Industry and occupation, Sydney Major Statistical Region and Balance of New South Wales Major Statistical Region 32
AUSTRALIAN CAPITAL TERRITORY	
LABOUR FORCE STATUS	
<i>Table</i>	
	Labour force status, Australian Capital Territory—
20.	Original series 33
21.	Trend series 34
22.	Age 36
23.	Non-institutionalised persons: Birthplace and year of arrival 36
<i>Graphs</i>	
	Trend series, Australian Capital Territory, August 1982 – August 1994—
..	<i>Employed males</i> 35
..	<i>Employed females</i> 35
..	<i>Unemployed males</i> 35
..	<i>Unemployed females</i> 35
..	<i>Male unemployment rate</i> 35
..	<i>Female unemployment rate</i> 35
..	<i>Male participation rate</i> 35
..	<i>Female participation rate</i> 35

CONTENTS—continued

		<i>Page</i>
EMPLOYED PERSONS		
<i>Table</i>		
24.	Employed persons, industry and occupation, Australian Capital Territory	37
<i>Graph</i>		
..	<i>Employment by industry division, Australian Capital Territory, August 1994</i>	37
UNEMPLOYED PERSONS		
<i>Table</i>		
25.	Long-term unemployment, Australian Capital Territory	38
<i>Graph</i>		
..	<i>Long-term unemployed as a proportion of total unemployed, Australian Capital Territory, August 1992 – August 1994</i>	38
..	Special article — introduction of ANZSIC for industry data	39
..	Explanatory notes	40
..	Technical note on data reliability	43
Appendix		
..	Regions of New South Wales and their statistical local areas	48
<i>Maps</i>		
..	<i>Regions of New South Wales</i>	50
..	<i>Regions of Sydney Major Statistical Region</i>	50
	Labour force supplementary topics	51

INQUIRIES

- *for further information about statistics in this publication and the availability of related unpublished statistics, contact the following—*
 ABS NSW office — Elizabeth Scrivener on Sydney (02) 268 4212 or
 Client Services Statistical Support on (02) 268 4398
 ABS ACT office — Bill Syms on Canberra (06) 207 0285
- *for information about other ABS statistics and services please refer to the back cover of this publication.*

CHANGES IN THIS ISSUE

Industry classification

From August 1994, the industry classification used in the Labour Force Survey is the Australian and New Zealand Industrial Classification (ANZSIC), which replaces the Australian Standard Industrial Classification (ASIC). For further information, refer to the special article on page 39 and *Information Paper: Labour Force Survey: Introduction of ANZSIC for Industry Data* (6259.0).

Regional labour force estimates

Commencing with this issue, there have been changes to the range of data published for Statistical Regions.

Table 18 now includes the following data for each region:

- employed people (number)
- unemployed people (number)
- in the labour force (number)
- not in the labour force (number)
- unemployment rate (per cent)
- participation rate (per cent)

It no longer includes:

- employed people working full-time
- employed people working part-time
- unemployed people looking for full-time work

Regional data is no longer published for:

- number of employed persons by age and
- unemployment rates by age

SUMMARY OF FINDINGS New South Wales

Seasonally adjusted estimates

In August 1994 there were 2,651,800 people employed in NSW. This was an increase of 89,800 or 3.5% over the previous 12 months. Employment has increased in most months since May 1993.

The unemployment rate in August 1994 was 9.0%. This was the lowest rate for 2 years. The rate was 9.2% for males and 8.7% for females. The NSW rates for males, females and persons were about half a percentage point lower than the Australian rates.

The number of unemployed people was estimated at 262,700 in August 1994. This was somewhat lower than in July and significantly lower than in August 1993 when the number was 307,300. Males represented 59% of the unemployed, compared with 62% in August 1993.

The participation rate stood at 61.3% overall, with a rate of 72.3% for males and 50.7% for females.

In August 1994 the size of the labour force was estimated at 2,914,500 people. This was an increase of 45,000 over the previous 12 months.

LABOUR FORCE, NSW
(Seasonally adjusted)

	Labour force		Unemployment rate (per cent)	Participation rate (per cent)
	Employed ('000)	Unemployed ('000)		
1993—				
August	2,562.0	307.3	10.7	61.0
1994—				
June	2,631.6	293.5	10.0	61.7
July	2,651.7	278.5	9.5	61.7
August	2,651.8	262.7	9.0	61.3
Annual change (a)	3.5%	-1.5%	-1.7	0.3

(a) For rates, the annual change is expressed as the difference in percentage points.

Trend series estimates

The number of employed people in NSW was 2,648,200 in August 1994. The trend estimate of employed people has increased each month since March 1993.

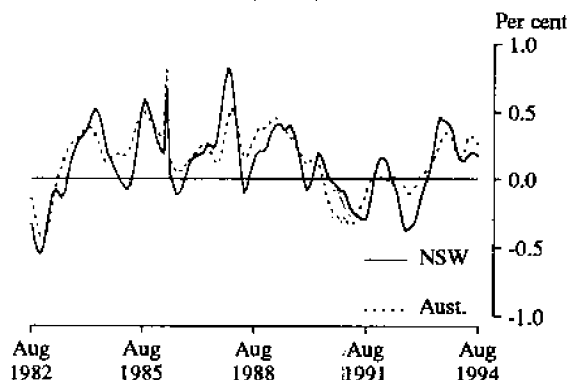
The overall trend unemployment rate was 9.4%, as compared to 10.7% in August 1993. A downward movement has occurred each month since November 1993 following a period of five months when the rate remained steady.

The trend estimate of unemployed people in August 1994 was 274,000. There has been a decrease in each month since November 1993 and a decrease of 34,500 in the twelve months to August 1994.

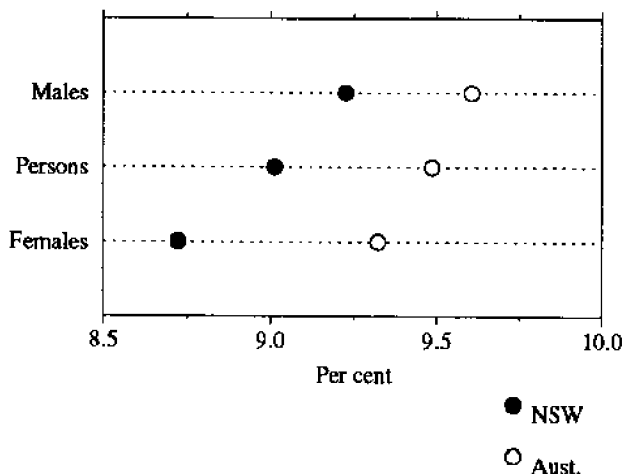
The trend series participation rate was 61.5% in August 1994. Although the rate has fallen gradually throughout 1994, it was still above the rate of 61.1% that applied in August 1993. Both male and female rates have shown a slight easing this year.

In August 1994 the trend estimate of the labour force stood at 2,922,200. This was a significant increase on the estimate of 2,875,700 for August 1993.

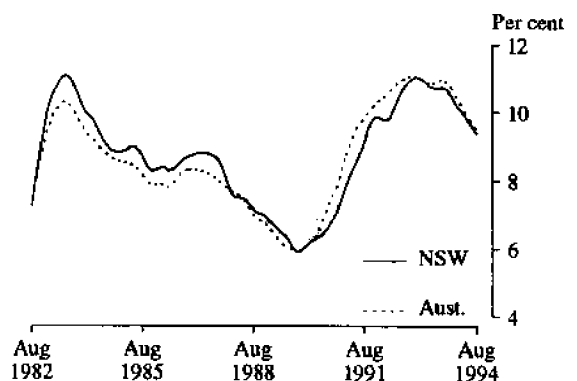
MONTHLY CHANGE IN NUMBER OF PERSONS EMPLOYED
(Trend)



UNEMPLOYMENT RATE, AUGUST 1994
(Seasonally adjusted)



UNEMPLOYMENT RATE
(Trend)



Source: *The Labour Force, Australia* (6203.0)

Regions of NSW

While the Labour Force Survey is designed primarily to produce reliable estimates at the national and State/Territory level, it also delivers estimates for a number of regions within States.

As with national and State estimates, regional labour force estimates are subject to sampling error. Since estimates for regions are components of corresponding estimates at the State level — and are thus based on a considerably smaller sample size — they are subject to higher relative standard errors. Care should therefore be taken in interpretation of regional estimates, particularly month to month movements. Tables of standard errors are included in the Technical Note on page 43–47 of this publication.

Sydney

In August 1994 the estimate of the number of people employed in the Sydney Major Statistical Region (MSR) was 1,746,300. This was an increase of 82,200 in the twelve months since August 1993. During this period, the number of part-time workers has increased from 20.9% to 22.1% of employed people.

In August 1994 the unemployment rate was 7.7%, a significant decrease from the rate of 9.6% that applied in August 1993.

The unemployment rates within Sydney (MSR) varied between 14.9% in Fairfield–Liverpool Statistical Region (SR) and 3.8% in Northern Beaches (SR).

The participation rate for Sydney (MSR) stood at 63.1% compared with 62.0% in August 1993. The rate for males was 73.8% and for females 52.9%. Gosford–Wyong (SR)

recorded the lowest participation rate of 55.8% while the highest rate was 71.5% in Northern Beaches (SR).

Balance of NSW

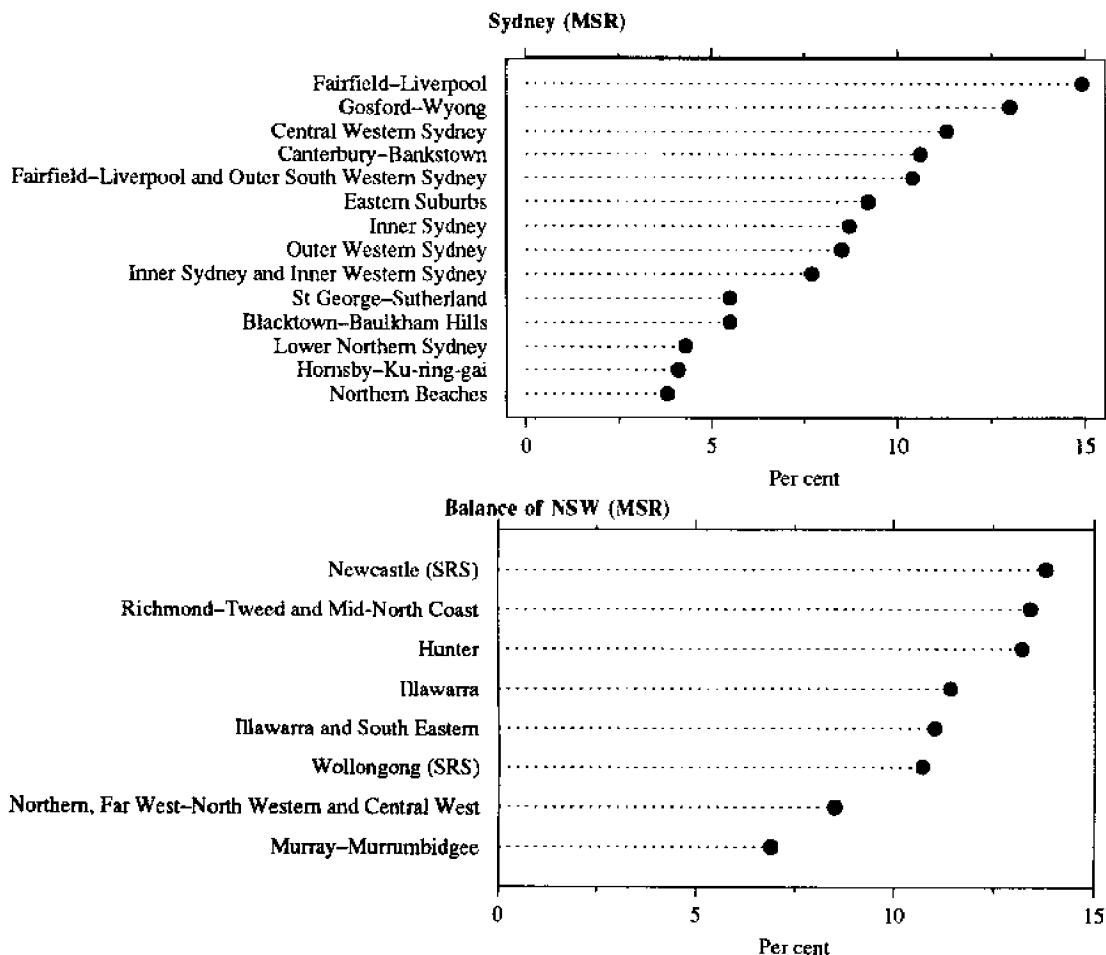
In August 1994 the number of employed people in this area of NSW was 888,000 and was about the same as the estimate for August 1993. In this 12 month period, the proportion of part-time workers has declined a little from 25.9% to 25.3%.

In August 1994 the unemployment rate was 11.0%, a decrease of 1.1 percentage points since August 1993.

Overall the unemployment rate varied from 6.9% in Murray–Murrumbidgee (SR) to 13.8% in Newcastle (SR).

The participation rate for the Balance of NSW (MSR) was 56.8% in August 1994, having decreased from 57.7% 12 months earlier. The rate for males was 68.2% and for females 45.7%.

UNEMPLOYMENT RATE, REGIONS OF NSW, AUGUST 1994



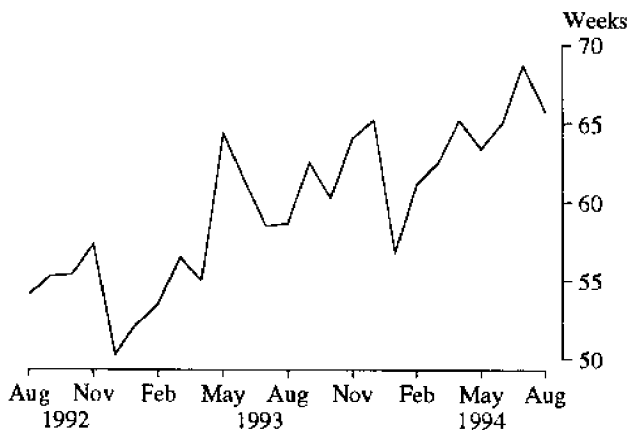
Duration of unemployment

In August 1994 the long term unemployed (52 weeks and over) represented 39.0% of the total unemployed. This compares with 35.9% in August 1993.

The average duration of unemployment was 65.8 weeks in August 1994, having increased from 58.5 weeks in August 1993.

Average duration of unemployment increased with age reaching an average of 96.2 weeks for people aged 45 years and over.

AVERAGE DURATION OF UNEMPLOYMENT, NSW



Age

Between August 1993 and August 1994, an increase in employment was recorded by the younger and the older age groups, while the middle age groups (from 35 to 59) declined in employment.

Part-time workers represented an estimated 23.2% of all employed people in August 1994, but this proportion varied between the age groups. The highest levels were among those aged 15-19 years with 59.2% and those aged 65 years and over with 41.9%. The lowest level was 17.9% for the 25-34 age group.

Estimated unemployment rates have decreased for all age groups in the twelve months to August 1994. The rate was

highest for 15-19 year olds at 19.2% then declined through the older age groups until reaching the lowest rate of 5.8% for 45-54 year olds; above this age, the rate rose. Thirty per cent of 15-19 year olds were looking for part-time work.

Participation rates also varied with age. The highest levels (between 75% and 82%) occurred among the four age groups between 20 and 54 years of age. The lowest level was among those 65 years and over.

Industry and occupation

Because of the introduction of the new ANZSIC classification, only the current month's industry data is available in this issue.

The industries with the largest number of employees in NSW in August 1994 were *Manufacturing* with 382,000 (or 15% of the total), *Retail trade* with 371,000 (14%) and *Property and business services* (248,000 or 9%).

Over 70% of those employed in the manufacturing industry were male and even higher proportions of males (about 90%) were found in *Mining, Construction and Electricity, gas and water supply*. Females dominated in *Health and community services* with 75% of employees and in *Education* (65%).

Manufacturing employed the largest number of people in Sydney (MSR) with 15% of the total while *Retail trade* had the largest number in Balance of NSW (MSR) with 16%.

Between August 1993 and August 1994 all occupation groups showed an increase in employment except *Managers and administrators* and *Tradespersons*. The largest increases of about 30,000 (or 8% in each case) occurred in the 3 groups *Professionals, Salespersons and personal service workers* and *Labourers and related workers*. The largest loss was in *Tradespersons* which fell by 11,000 (or 3%). The largest occupation group were *Clerks* with 450,000 employees (17% of the total).

In Sydney (MSR) rises and falls occurred in the same occupation groups as for NSW. However, in the Balance of NSW (MSR) the movements were evenly divided, with four occupation groups recording rises and four groups recording falls.

SUMMARY OF FINDINGS

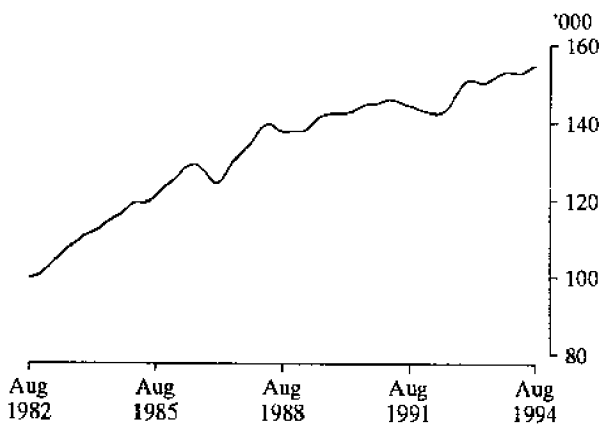
Australian Capital Territory

Note: Seasonally adjusted estimates are not available for the ACT.

Trend series

The trend estimate of the number of **employed** people in ACT in August 1994 was 154,700. This was an increase of 3,300 people since August 1993. This 12 month period has seen only small monthly movements: the estimate first rising until December, then falling until April, then rising for the last four months.

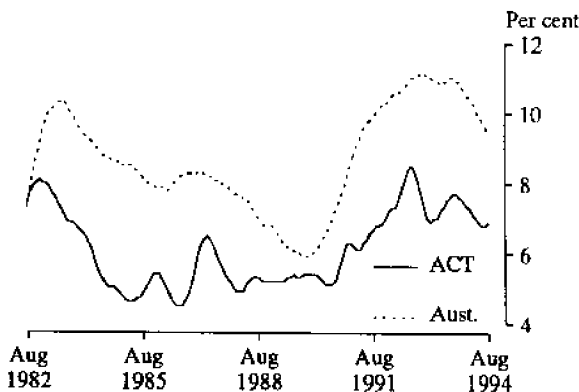
EMPLOYED PERSONS, ACT
(Trend)



The trend **unemployment rate** was 6.9% in August 1994. The rates for males and females were similar at 6.9% and 6.8% respectively. The overall unemployment rate rose to 7.7% in September 1993 then gradually declined to 6.8% in July 1994 before a slight rise in August.

In August 1994 the trend estimate of the number of **unemployed** people in the ACT was 11,400, a fall of 1,000 since August 1993.

UNEMPLOYMENT RATE
(Trend)



Although the **participation rate** had risen in the last three months to reach 72.7% in August 1994, it was still slightly lower than in August 1993. The participation rate was 79.7% for males and 65.9% for females in August 1994.

The ACT **labour force** was estimated at 166,100 in August 1994, 2,300 higher than in August 1993.

Age

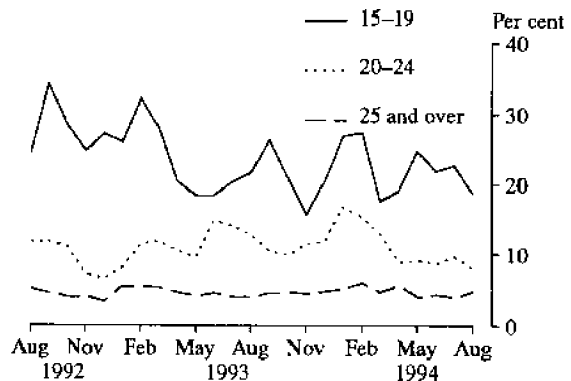
In August 1994 the unemployment rate in the ACT decreased with age, with the highest rate (18.7%) among people aged 15–19 years. The rate was 8.0% for people aged 20–24 years and 4.8% for those aged 25 years and over.

The proportion of employed people who worked full-time increased rapidly with age. In August 1994, one-third of 15–19 year olds worked full-time compared to two-thirds of 20–24 year olds and over 80% of people aged 25 and over. This pattern is reflected in the average weekly hours worked of 20, 31 and 36 hours respectively.

The proportion of unemployed people looking for full-time work ranged from just over half of 15–19 year olds to over 80% of those 25 years and over.

The highest participation rate was 83.5% for those aged 20–24 years, followed by 72.7% for those aged 25 and over.

UNEMPLOYMENT RATE BY AGE, ACT



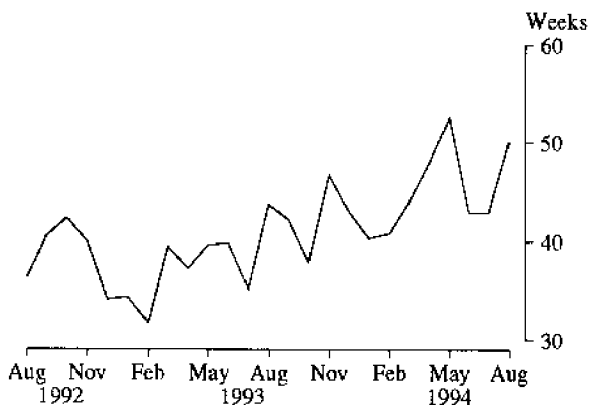
Duration of unemployment

In August 1994 average duration of unemployment in the ACT was 50 weeks. The highest average of 60 weeks applied to those 25 and over and the lowest of 29 weeks was for 20-24 years old.

The long term unemployed (52 weeks and over) represented just under a third of all unemployed people in August 1994. This was the highest proportion reached in the past 12 months.

Among males the long term unemployed were 41.1% of the total, while for females the estimate was 22.3%.

AVERAGE DURATION OF UNEMPLOYMENT, ACT



Industry and occupation

As mentioned earlier, because of the introduction of the new ANZSIC classification in this issue, only August 1994 data is available for industry.

The industry division with the most employees in the ACT in August 1994 was *Government administration and defence* with 39,000 employees or a quarter of the total. This was followed by *Retail trade* with 20,000 employees (13% of the total) and *Property and business services* (15,000 or 10%).

The largest occupation group were *Clerks* with a quarter of the employed people in the ACT. Their numbers increased by 4,700 (about 14%) in the last 12 months to reach 39,300 in August 1994.

The next most populous occupation groups were *Professionals* then *Salespersons and personal service workers*.

Over the past 12 months, five of the occupation groups increased in employment, while three declined. The largest movement was in the *Professionals* group which fell by 6,400 (19%).

NOTE

This publication contains estimates of the civilian labour force in NSW and the ACT derived from the Labour Force Survey component of the Monthly Population Survey, which is conducted on a sample basis throughout Australia.

Explanatory notes for the data contained within this publication can be found on page 40.

Care should be taken in the interpretation of month-to-month movements in estimates. During the period September to December 1992 a new sample for the Labour Force Survey was introduced, which has increased the variability of estimates of month-to-month movements. See paragraphs 4-6 of the Explanatory Notes or *Information Paper: Labour Force Survey Sample Design* (6269.0), available from any ABS office.

GREG BRAY
Deputy Commonwealth Statistician

TABLE 1. LABOUR FORCE STATUS: ORIGINAL SERIES, NSW

Month	Employed		Unemployed			Labour force ('000)	Not in labour force ('000)	Civilian population aged 15 and over ('000)	Unemployment rate (per cent)	Participation rate (per cent)	
	Full-time workers ('000)	Part-time workers ('000)	Total ('000)	Looking for full-time work ('000)	Looking for part-time work ('000)						Total ('000)
MALES											
August—											
1990	1,417.8	121.7	1,539.6	95.5	11.0	106.5	1,646.1	593.7	2,239.8	6.5	73.5
1991	1,384.7	128.2	1,512.9	147.0	11.3	158.3	1,671.2	595.6	2,266.8	9.5	73.7
1992	1,334.4	146.5	1,480.9	175.6	14.1	189.7	1,670.6	619.7	2,290.3	11.4	72.9
1993—											
June	1,322.6	150.8	1,473.4	177.9	16.1	194.0	1,667.4	639.2	2,306.6	11.6	72.3
July	1,332.1	140.9	1,473.0	172.4	14.1	186.6	1,659.6	648.9	2,308.4	11.2	71.9
August	1,315.7	137.2	1,453.0	173.0	16.3	189.4	1,642.3	667.9	2,310.2	11.5	71.1
1994—											
May	1,352.4	152.4	1,504.8	160.0	12.8	172.8	1,677.6	649.4	2,326.9	10.3	72.1
June	1,345.3	163.8	1,509.1	156.1	13.7	169.8	1,678.9	650.1	2,329.0	10.1	72.1
July	1,367.3	161.5	1,528.8	142.4	12.8	155.2	1,684.0	647.0	2,331.0	9.2	72.2
August	1,346.4	173.4	1,519.8	141.4	12.4	153.8	1,673.6	659.4	2,333.0	9.2	71.7
MARRIED FEMALES											
August—											
1990	354.7	284.0	638.7	15.7	11.2	26.9	665.6	660.4	1,326.0	4.0	50.2
1991	366.3	286.5	652.8	25.8	12.2	38.0	690.8	662.4	1,353.2	5.5	51.0
1992	349.9	313.3	663.3	29.1	12.6	41.8	705.0	648.0	1,353.1	5.9	52.1
1993—											
June	358.6	285.7	644.3	31.3	14.3	45.6	690.9	647.3	1,338.2	6.6	51.6
July	358.8	288.6	647.4	25.7	13.0	38.7	686.1	642.2	1,328.2	5.6	51.7
August	358.1	297.0	655.1	30.7	14.7	45.5	700.6	640.5	1,341.1	6.5	52.2
1994—											
May	398.4	299.9	698.3	30.5	11.7	42.2	740.5	651.2	1,391.7	5.7	53.2
June	396.5	291.2	687.7	33.7	13.0	46.7	734.4	663.0	1,397.4	6.4	52.6
July	397.3	286.7	683.9	31.6	13.1	44.7	728.6	649.5	1,378.1	6.1	52.9
August	385.3	292.3	677.6	26.4	12.0	38.4	716.0	667.5	1,383.5	5.4	51.8
ALL FEMALES											
August—											
1990	672.3	401.2	1,073.5	48.7	23.7	72.4	1,145.9	1,168.1	2,314.0	6.3	49.5
1991	668.7	407.7	1,076.4	69.4	27.6	96.9	1,173.4	1,171.3	2,344.7	8.3	50.0
1992	638.9	453.0	1,091.9	82.4	31.2	113.6	1,205.5	1,165.0	2,370.5	9.4	50.9
1993—											
June	663.3	427.6	1,090.9	80.0	27.7	107.7	1,198.6	1,190.2	2,388.8	9.0	50.2
July	663.9	426.2	1,090.1	74.6	27.0	101.6	1,191.7	1,199.1	2,390.7	8.5	49.8
August	654.3	437.5	1,091.8	78.8	30.5	109.3	1,201.1	1,191.5	2,392.6	9.1	50.2
1994—											
May	682.3	458.3	1,140.6	74.3	29.1	103.5	1,244.0	1,167.1	2,411.1	8.3	51.6
June	685.7	440.6	1,126.3	79.7	31.6	111.3	1,237.6	1,175.9	2,413.5	9.0	51.3
July	696.4	441.1	1,137.6	81.1	30.4	111.5	1,249.1	1,166.7	2,415.8	8.9	51.7
August	676.3	438.3	1,114.6	74.8	26.5	101.4	1,215.9	1,202.1	2,418.0	8.3	50.3
PERSONS											
August—											
1990	2,090.1	522.9	2,613.1	144.2	34.7	178.9	2,792.0	1,761.8	4,553.8	6.4	61.3
1991	2,053.4	535.9	2,589.4	216.3	38.9	255.2	2,844.5	1,766.9	4,611.4	9.0	61.7
1992	1,973.3	599.5	2,572.8	258.0	45.3	303.3	2,876.1	1,784.7	4,660.8	10.5	61.7
1993—											
June	1,985.9	578.4	2,564.4	257.9	43.8	301.7	2,866.1	1,829.4	4,695.5	10.5	61.0
July	1,996.0	567.0	2,563.0	247.0	41.2	288.2	2,851.2	1,848.0	4,699.2	10.1	60.7
August	1,970.1	574.7	2,544.8	251.8	46.9	298.7	2,843.5	1,859.4	4,702.9	10.5	60.5
1994—											
May	2,034.7	610.7	2,645.4	234.3	41.9	276.2	2,921.6	1,816.4	4,738.0	9.5	61.7
June	2,031.0	604.3	2,635.4	235.8	45.3	281.1	2,916.5	1,826.0	4,742.4	9.6	61.5
July	2,063.7	602.7	2,666.4	223.5	43.2	266.7	2,933.1	1,813.7	4,746.8	9.1	61.8
August	2,022.7	611.7	2,634.4	216.2	38.9	255.1	2,889.5	1,861.6	4,751.1	8.8	60.8

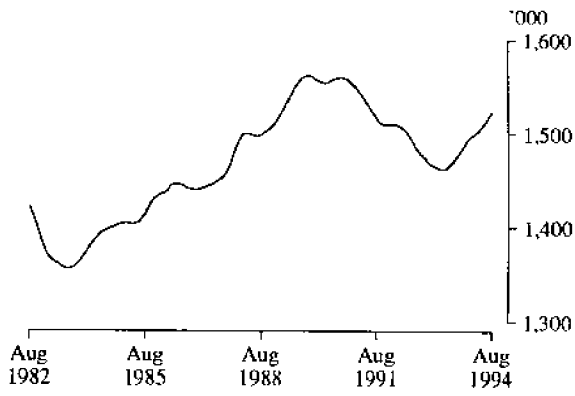
TABLE 2. LABOUR FORCE STATUS: SEASONALLY ADJUSTED AND TREND SERIES, NSW

Month	Seasonally adjusted series					Trend series (a)				
	Employed ('000)	Unemp-loyed ('000)	Labour force ('000)	Unemp-loyment rate (per cent)	Partici-pation rate (per cent)	Employed ('000)	Unemp-loyed ('000)	Labour force ('000)	Unemp-loyment rate (per cent)	Partici-pation rate (per cent)
MALES										
August—										
1990	1,552.5	108.9	1,661.3	6.6	74.2	1,559.6	107.4	1,667.0	6.4	74.4
1991	1,525.2	161.0	1,686.2	9.6	74.4	1,517.0	158.4	1,675.4	9.5	73.9
1992	1,492.9	192.7	1,685.6	11.4	73.6	1,488.0	191.3	1,679.3	11.4	73.3
1993—										
June	1,473.8	201.6	1,675.5	12.0	72.6	1,463.8	194.5	1,658.3	11.7	71.9
July	1,465.1	192.4	1,657.5	11.6	71.8	1,467.0	194.2	1,661.2	11.7	72.0
August	1,464.7	191.9	1,656.7	11.6	71.7	1,471.0	193.9	1,664.9	11.6	72.1
September	1,474.7	192.2	1,666.9	11.5	72.1	1,475.2	193.3	1,668.5	11.6	72.2
October	1,483.2	194.6	1,677.8	11.6	72.5	1,480.1	192.1	1,672.2	11.5	72.3
November	1,485.3	188.4	1,673.6	11.3	72.3	1,485.6	190.5	1,676.1	11.4	72.4
December	1,491.8	192.2	1,684.0	11.4	72.7	1,491.1	188.5	1,679.6	11.2	72.5
1994—										
January	1,494.1	186.8	1,680.8	11.1	72.5	1,495.3	186.3	1,681.6	11.1	72.5
February	1,501.8	178.3	1,680.1	10.6	72.4	1,497.8	184.0	1,681.8	10.9	72.5
March	1,501.1	183.4	1,684.5	10.9	72.5	1,500.0	181.5	1,681.5	10.8	72.4
April	1,503.0	177.3	1,680.3	10.6	72.3	1,502.9	178.5	1,681.4	10.6	72.3
May	1,499.2	178.1	1,677.3	10.6	72.1	1,507.0	174.7	1,681.7	10.4	72.3
June	1,509.4	176.4	1,685.8	10.5	72.4	1,512.1	170.3	1,682.4	10.1	72.2
July	1,520.5	160.3	1,680.8	9.5	72.1	1,517.6	165.8	1,683.4	9.8	72.2
August	1,532.1	155.7	1,687.8	9.2	72.3	1,522.8	161.6	1,684.4	9.6	72.2
FEMALES										
August—										
1990	1,081.6	76.7	1,158.3	6.6	50.1	1,083.3	79.2	1,162.5	6.8	50.2
1991	1,083.5	102.5	1,186.0	8.6	50.6	1,074.4	104.2	1,178.7	8.8	50.3
1992	1,098.1	119.9	1,218.0	9.8	51.4	1,094.5	116.9	1,211.4	9.7	51.1
1993—										
June	1,087.2	113.3	1,200.6	9.4	50.3	1,081.6	111.3	1,192.9	9.3	49.9
July	1,083.9	107.4	1,191.4	9.0	49.8	1,088.4	112.4	1,200.8	9.4	50.2
August	1,097.3	115.4	1,212.7	9.5	50.7	1,096.2	114.6	1,210.7	9.5	50.6
September	1,100.4	114.2	1,214.6	9.4	50.7	1,103.3	116.9	1,220.2	9.6	51.0
October	1,112.8	125.2	1,238.1	10.1	51.7	1,109.5	118.3	1,227.8	9.6	51.2
November	1,118.3	123.4	1,241.7	9.9	51.8	1,114.4	118.4	1,232.9	9.6	51.4
December	1,115.3	109.8	1,225.1	9.0	51.0	1,118.4	117.2	1,235.6	9.5	51.5
1994—										
January	1,122.7	115.6	1,238.3	9.3	51.5	1,120.9	115.1	1,236.0	9.3	51.4
February	1,119.0	114.3	1,233.4	9.3	51.3	1,122.7	113.0	1,235.8	9.1	51.4
March	1,127.4	110.5	1,237.9	8.9	51.4	1,124.1	112.0	1,236.1	9.1	51.4
April	1,121.3	113.8	1,235.1	9.2	51.3	1,125.2	111.9	1,237.1	9.0	51.4
May	1,131.2	104.9	1,236.1	8.5	51.3	1,125.9	112.3	1,238.1	9.1	51.4
June	1,122.2	117.1	1,239.3	9.4	51.3	1,126.0	112.4	1,238.4	9.1	51.3
July	1,131.2	118.2	1,249.4	9.5	51.7	1,125.7	112.4	1,238.1	9.1	51.3
August	1,119.7	107.0	1,226.8	8.7	50.7	1,125.4	112.4	1,237.8	9.1	51.2
PERSONS										
August—										
1990	2,634.1	185.5	2,819.6	6.6	61.9	2,642.9	186.6	2,829.4	6.6	62.1
1991	2,608.7	263.5	2,872.2	9.2	62.3	2,591.5	262.6	2,854.1	9.2	61.9
1992	2,591.1	312.6	2,903.7	10.8	62.3	2,582.5	308.3	2,890.8	10.7	62.0
1993—										
June	2,561.0	315.0	2,876.0	11.0	61.3	2,545.3	305.8	2,851.2	10.7	60.7
July	2,549.0	299.8	2,848.9	10.5	60.6	2,555.4	306.6	2,862.0	10.7	60.9
August	2,562.0	307.3	2,869.4	10.7	61.0	2,567.2	308.5	2,875.7	10.7	61.1
September	2,575.1	306.4	2,881.5	10.6	61.2	2,578.5	310.2	2,888.7	10.7	61.4
October	2,596.1	319.8	2,915.9	11.0	61.9	2,589.6	310.4	2,900.0	10.7	61.6
November	2,603.6	311.8	2,915.4	10.7	61.8	2,600.1	308.9	2,909.0	10.6	61.7
December	2,607.1	302.1	2,909.1	10.4	61.7	2,609.5	305.7	2,915.2	10.5	61.8
1994—										
January	2,616.8	302.3	2,919.2	10.4	61.8	2,616.2	301.4	2,917.6	10.3	61.8
February	2,620.8	292.6	2,913.4	10.0	61.7	2,620.5	297.1	2,917.6	10.2	61.7
March	2,628.4	293.9	2,922.4	10.1	61.8	2,624.1	293.5	2,917.6	10.1	61.7
April	2,624.4	291.1	2,915.5	10.0	61.6	2,628.1	290.4	2,918.5	10.0	61.7
May	2,630.4	283.0	2,913.4	9.7	61.5	2,632.8	287.0	2,919.8	9.8	61.6
June	2,631.6	293.5	2,925.1	10.0	61.7	2,638.1	282.8	2,920.9	9.7	61.6
July	2,651.7	278.5	2,930.2	9.5	61.7	2,643.4	278.2	2,921.5	9.5	61.5
August	2,651.8	262.7	2,914.5	9.0	61.3	2,648.2	274.0	2,922.2	9.4	61.5

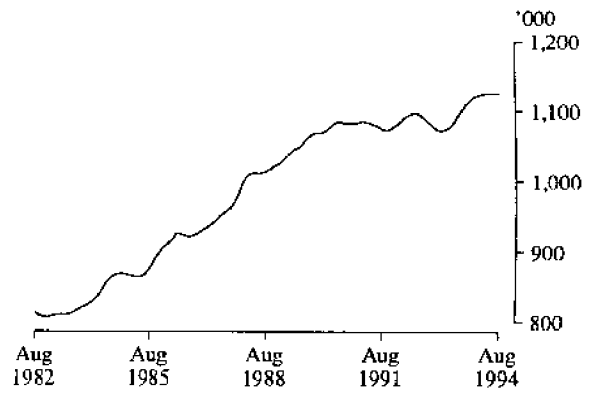
(a) See Explanatory Note 26.

TREND SERIES, NSW (a)

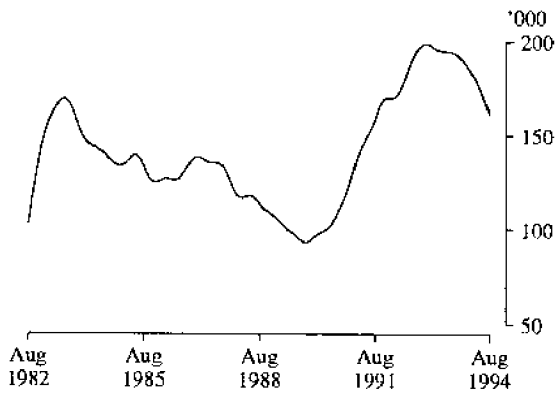
Employed males



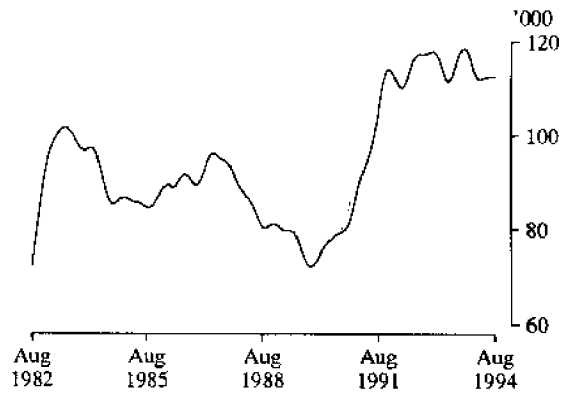
Employed females



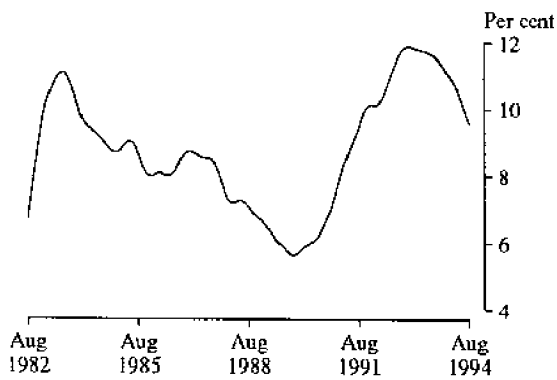
Unemployed males



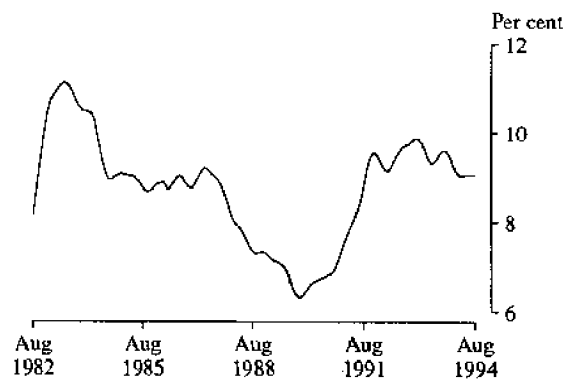
Unemployed females



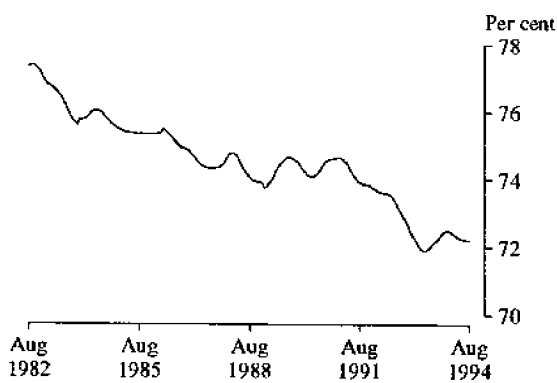
Male unemployment rate



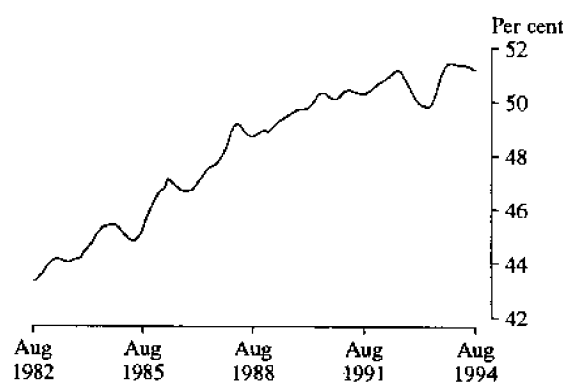
Female unemployment rate



Male participation rate



Female participation rate



(a) Comparisons between these graphs should not be made, as their vertical axes are not similarly scaled.

TABLE 3. LABOUR FORCE STATUS: AGE, NSW, AUGUST 1994

Age group (years)	Employed			Unemployed			Labour force ('000)	Not in labour force ('000)	Civilian population aged 15 and over ('000)	Unemployment rate (per cent)	Participation rate (per cent)
	Full-time workers ('000)	Part-time workers ('000)	Total ('000)	Looking for full-time work ('000)	Looking for part-time work ('000)	Total ('000)					
MALES											
15-19	46.3	48.6	94.9	15.2	6.1	21.3	116.3	98.4	214.6	18.4	54.2
20-24	147.4	32.3	179.8	26.2	* 3.0	29.2	209.0	30.6	239.6	14.0	87.2
25-34	363.0	24.0	387.0	38.8	* 1.4	40.2	427.2	42.8	469.9	9.4	90.9
35-44	361.0	23.6	384.6	28.4	* 0.3	28.7	413.3	37.7	451.1	6.9	91.6
45-54	289.5	17.8	307.3	19.3	* 0.6	19.9	327.2	46.7	373.9	6.1	87.5
55-59	81.1	8.3	89.4	8.7	* 0.4	9.1	98.5	39.4	137.9	9.2	71.5
60-64	40.7	9.1	49.7	* 4.7	* 0.7	5.4	55.1	67.4	122.5	9.7	45.0
65 and over	17.4	9.6	27.0	* 0.0	* 0.0	* 0.0	27.0	296.5	323.5	* 0.0	8.3
Total	1,346.4	173.4	1,519.8	141.4	12.4	153.8	1,673.6	659.4	2,333.0	9.2	71.7
MARRIED FEMALES											
15-19	* 1.2	* 1.8	* 3.0	* 1.8	* 0.3	* 2.1	* 5.0	* 2.0	7.1	* 41.3	* 71.1
20-24	30.5	10.7	41.2	* 4.0	* 0.4	* 4.4	45.6	19.1	64.7	* 9.6	70.4
25-34	112.3	79.4	191.7	9.7	* 3.6	13.3	204.9	119.7	324.7	6.5	63.1
35-44	120.5	103.9	224.4	7.1	* 5.0	12.2	236.6	112.0	348.6	5.1	67.9
45-54	95.8	70.8	166.6	* 3.1	* 2.1	* 5.3	171.9	107.6	279.4	* 3.1	61.5
55-59	18.6	14.4	33.0	* 0.7	* 0.0	* 0.7	33.6	59.4	93.0	* 2.0	36.2
60-64	* 3.8	7.3	11.1	* 0.0	* 0.6	* 0.6	11.7	74.2	85.9	* 5.4	13.6
65 and over	* 2.6	* 4.1	6.7	* 0.0	* 0.0	* 0.0	6.7	173.4	180.0	* 0.0	3.7
Total	385.3	292.3	677.6	26.4	12.0	38.4	716.0	667.5	1,383.5	5.4	51.8
ALL FEMALES											
15-19	28.9	60.6	89.4	15.4	7.1	22.5	111.9	93.5	205.5	20.1	54.5
20-24	117.5	41.3	158.8	17.0	* 3.4	20.5	179.3	56.1	235.5	11.4	76.2
25-34	192.3	97.0	289.3	17.3	6.3	23.6	312.9	162.5	475.4	7.5	65.8
35-44	168.1	121.4	289.5	13.8	5.7	19.5	309.1	144.4	453.5	6.3	68.2
45-54	131.4	82.7	214.1	8.7	* 3.4	12.1	226.2	133.8	359.9	5.3	62.8
55-59	27.6	20.4	48.0	* 2.3	* 0.0	* 2.3	50.4	85.1	135.5	* 4.6	37.2
60-64	5.4	8.5	13.9	* 0.0	* 0.6	* 0.6	14.6	109.7	124.3	* 4.3	11.7
65 and over	* 4.9	6.4	11.4	* 0.3	* 0.0	* 0.3	11.7	416.9	428.6	* 2.5	2.7
Total	676.3	438.3	1,114.6	74.8	26.5	101.4	1,215.9	1,202.1	2,418.0	8.3	50.3
PERSONS											
15-19	75.2	109.2	184.4	30.6	13.2	43.8	228.2	191.9	420.1	19.2	54.3
20-24	265.0	73.7	338.6	43.3	6.4	49.7	388.3	86.8	475.0	12.8	81.7
25-34	555.3	121.0	676.3	56.1	7.7	63.8	740.1	205.2	945.3	8.6	78.3
35-44	529.1	145.0	674.2	42.2	6.0	48.2	722.4	182.1	904.6	6.7	79.9
45-54	420.9	100.5	521.4	28.0	* 4.0	32.0	553.4	180.5	733.8	5.8	75.4
55-59	108.7	28.7	137.5	11.1	* 0.4	11.4	148.9	124.5	273.3	7.7	54.5
60-64	46.1	17.6	63.7	* 4.7	* 1.3	6.0	69.6	177.1	246.8	8.6	28.2
65 and over	22.3	16.1	38.4	* 0.3	* 0.0	* 0.3	38.7	713.4	752.1	* 0.7	5.1
Total	2,022.7	611.7	2,634.4	216.2	38.9	255.1	2,889.5	1,861.6	4,751.1	8.8	60.8

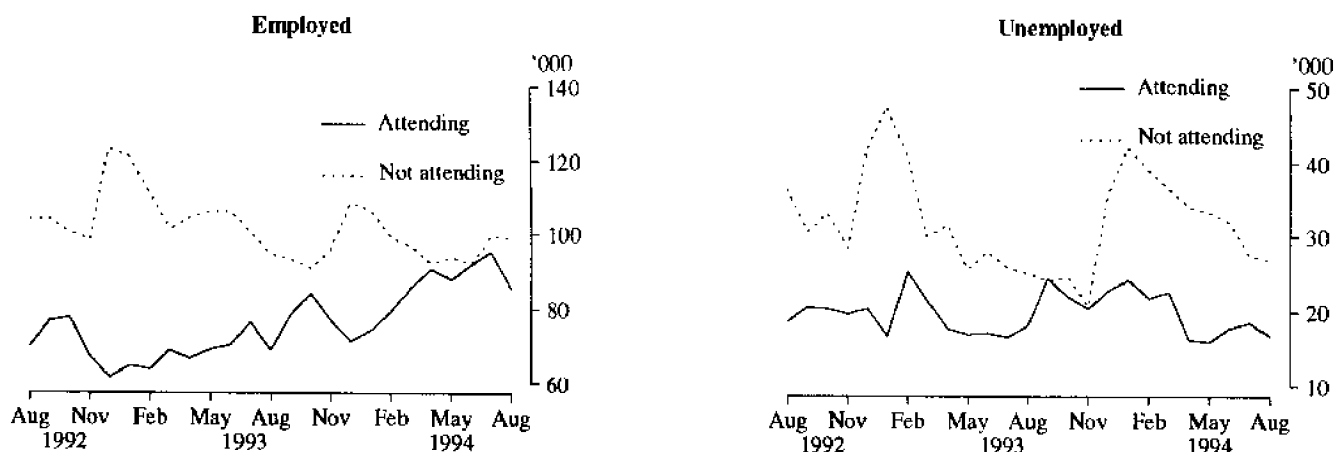
PERSONS AGED 15-19 IN THE LABOUR FORCE, NSW:
FULL-TIME ATTENDANCE AT SCHOOL OR A TERTIARY EDUCATIONAL INSTITUTION

TABLE 4. LABOUR FORCE STATUS: PERSONS AGED 15-24 BY FULL-TIME EDUCATIONAL ATTENDANCE, NSW, AUGUST 1994

Age (years)	Employed			Unemployed			Labour force ('000)	Not in labour force ('000)	Civilian population aged 15 and over ('000)	Unemployment rate (per cent)	Participation rate (per cent)
	Full-time workers ('000)	Part-time workers ('000)	Total ('000)	Looking for full-time work ('000)	Looking for part-time work ('000)	Total ('000)					
ATTENDING SCHOOL OR A TERTIARY EDUCATIONAL INSTITUTION FULL-TIME											
15-19	* 1.0	84.4	85.4	* 3.9	13.0	16.9	102.3	177.1	279.4	16.5	36.6
15	* 0.0	18.2	18.2	* 0.0	5.6	5.6	23.8	55.8	79.6	23.5	29.9
16	* 0.3	20.8	21.1	* 0.6	* 2.5	* 3.1	24.2	43.7	67.8	* 12.9	35.6
17	* 0.0	23.8	23.8	* 1.2	* 1.0	* 2.2	26.0	38.8	64.8	* 8.6	40.1
18	* 0.3	12.7	13.0	* 0.5	* 2.2	* 2.7	15.7	24.6	40.3	* 17.3	38.9
19	* 0.3	9.0	9.3	* 1.5	* 1.8	* 3.3	12.6	14.3	26.8	* 26.0	46.9
20-24	* 2.3	24.6	27.0	* 1.0	* 3.3	* 4.3	31.3	34.4	65.7	* 13.8	47.6
20	* 0.6	9.0	9.6	* 0.0	* 1.6	* 1.6	11.2	11.7	22.9	* 14.1	48.9
21	* 0.0	6.2	6.2	* 0.7	* 1.0	* 1.7	8.0	6.9	14.9	* 21.9	53.7
22	* 0.4	* 5.1	5.5	* 0.3	* 0.7	* 1.0	6.5	* 5.2	11.7	* 15.4	55.4
23	* 1.0	* 2.6	* 3.6	* 0.0	* 0.0	* 0.0	* 3.6	6.8	10.4	* 0.0	* 34.8
24	* 0.3	* 1.7	* 2.0	* 0.0	* 0.0	* 0.0	* 2.0	* 3.9	5.9	* 0.0	* 34.1
Total aged 15-24	* 3.3	109.0	112.3	* 5.0	16.3	21.2	133.5	211.6	345.1	15.9	38.7
NOT ATTENDING SCHOOL OR A TERTIARY EDUCATIONAL INSTITUTION FULL-TIME (a)											
15-19	74.2	24.8	99.0	26.7	* 0.3	26.9	125.9	14.8	140.7	21.4	89.5
15	* 1.6	* 0.3	* 1.9	* 0.3	* 0.0	* 0.3	* 2.1	* 1.2	* 3.3	* 13.1	* 64.2
16	6.5	* 2.8	9.3	* 4.4	* 0.0	* 4.4	13.7	* 1.3	15.0	* 32.1	91.6
17	7.4	* 3.0	10.3	5.7	* 0.0	5.7	16.0	* 2.6	18.6	35.4	86.1
18	22.8	8.9	31.7	7.3	* 0.3	7.5	39.2	* 4.3	43.5	19.2	90.1
19	35.9	9.9	45.8	9.0	* 0.0	9.0	54.9	5.4	60.3	16.5	91.0
20-24	262.6	49.0	311.7	42.2	* 3.1	45.3	357.0	52.3	409.3	12.7	87.2
20	37.9	9.7	47.7	9.6	* 0.7	10.3	58.0	9.1	67.1	17.8	86.4
21	49.1	10.1	59.1	8.9	* 0.7	9.6	68.7	9.5	78.1	13.9	87.9
22	54.8	10.5	65.2	9.0	* 0.7	9.8	75.0	11.0	86.0	13.0	87.2
23	57.3	9.9	67.2	8.5	* 0.7	9.1	76.3	13.0	89.3	12.0	85.5
24	63.6	8.9	72.4	6.3	* 0.3	6.6	79.0	9.8	88.8	8.3	89.0
Total aged 15-24	336.9	73.8	410.7	68.9	* 3.4	72.2	482.9	67.1	550.0	15.0	87.8
TOTAL											
15-19	75.2	109.2	184.4	30.6	13.2	43.8	228.2	197.9	420.1	19.2	54.3
15	* 1.6	18.5	20.1	* 0.3	5.6	5.9	25.9	57.0	82.9	22.6	31.3
16	6.9	23.5	30.4	* 5.0	* 2.5	7.5	37.9	44.9	82.8	19.8	45.8
17	7.4	26.8	34.1	6.9	* 1.0	7.9	42.0	41.4	83.4	18.8	50.4
18	23.1	21.5	44.6	7.8	* 2.5	10.3	54.9	28.9	83.8	18.7	65.5
19	36.3	18.9	55.2	10.6	* 1.8	12.3	67.5	19.7	87.2	18.2	77.4
20-24	265.0	73.7	338.6	43.3	6.4	49.7	388.3	86.8	475.0	12.8	81.7
20	38.6	18.7	57.3	9.6	* 2.3	11.9	69.2	20.8	90.0	17.2	76.9
21	49.1	16.3	65.4	9.6	* 1.7	11.3	76.7	16.3	93.0	14.8	82.4
22	55.1	15.6	70.7	9.4	* 1.4	10.8	81.5	16.2	97.7	13.2	83.4
23	58.4	12.4	70.8	8.5	* 0.7	9.1	79.9	19.7	99.6	11.4	80.2
24	63.9	10.5	74.4	6.3	* 0.3	6.6	81.0	13.7	94.7	8.1	85.6
Total aged 15-24	340.2	182.8	523.0	73.9	19.6	93.5	616.5	278.7	895.1	15.2	68.9

(a) Includes institutionalised persons.

TABLE 5. LABOUR FORCE STATUS: FAMILY STATUS, NSW, AUGUST 1994

Family status	Employed			Unemployed			Labour force (<i>'000</i>)	Not in labour force (<i>'000</i>)	Civilian population aged 15 and over (<i>'000</i>)	Unemployment rate (per cent)	Participation rate (per cent)
	Full-time workers (<i>'000</i>)	Part-time workers (<i>'000</i>)	Total (<i>'000</i>)	Looking for full-time work (<i>'000</i>)	Looking for part-time work (<i>'000</i>)	Total (<i>'000</i>)					
<i>Member of a family</i>	1,652.5	536.0	2,188.4	167.1	35.5	202.6	2,391.1	1,362.8	3,753.8	8.5	63.7
Husband	895.4	62.6	957.9	67.8	* 2.6	70.4	1,028.4	340.8	1,369.2	6.9	75.1
With children aged 0-14 present	500.6	23.2	523.9	43.4	* 1.3	44.7	568.6	38.3	606.9	7.9	93.7
Without children aged 0-14 present	394.7	39.3	434.1	24.4	* 1.3	25.7	459.8	302.5	762.2	5.6	60.3
With dependants present	573.8	28.8	602.6	46.5	* 1.3	47.8	650.4	46.2	696.6	7.4	93.4
Without dependants present	321.6	33.8	355.4	21.3	* 1.3	22.6	378.0	294.6	672.6	6.0	56.2
Wife	372.6	283.8	656.4	25.2	12.0	37.2	693.6	634.7	1,328.3	5.4	52.2
With children aged 0-14 present	142.5	170.5	313.0	14.6	9.0	23.6	336.6	239.2	575.8	7.0	58.5
Without children aged 0-14 present	230.1	113.3	343.4	10.6	* 3.0	13.6	357.0	395.5	752.5	3.8	47.4
With dependants present	180.8	195.8	376.5	16.8	9.9	26.7	403.3	260.6	663.8	6.6	60.7
Without dependants present	191.8	88.0	279.9	8.4	* 2.1	10.5	290.3	374.1	664.4	3.6	43.7
Not-married male family head	26.4	* 4.1	30.5	* 2.6	* 0.3	* 2.9	33.5	15.8	49.3	* 8.8	67.9
With children aged 0-14 present	7.5	* 1.6	9.1	* 0.7	* 0.3	* 1.0	10.0	* 3.9	13.9	* 9.7	72.0
Without children aged 0-14 present	18.9	* 2.5	21.5	* 2.0	* 0.0	* 2.0	23.4	11.9	35.3	* 8.4	66.3
With dependants present	13.2	* 1.9	15.1	* 1.0	* 0.3	* 1.3	16.3	5.4	21.8	* 7.8	75.1
Without dependants present	13.2	* 2.3	15.4	* 1.7	* 0.0	* 1.7	17.1	10.4	27.5	* 9.7	62.3
Not-married female family head	43.6	28.1	71.7	10.6	* 4.7	15.3	87.0	112.3	199.3	17.6	43.7
With children aged 0-14 present	20.4	19.2	39.6	6.6	* 4.1	10.7	50.3	59.6	109.9	21.2	45.8
Without children aged 0-14 present	23.2	8.9	32.1	* 4.0	* 0.6	* 4.6	36.7	52.7	89.5	* 12.6	41.1
With dependants present	28.5	21.7	50.1	8.1	* 4.4	12.5	62.7	66.3	128.9	20.0	48.6
Without dependants present	15.2	6.4	21.6	* 2.5	* 0.3	* 2.8	24.4	46.1	70.4	* 11.4	34.6
Full-time student aged 15-24 (a)	* 2.0	99.5	101.5	* 3.4	14.9	18.3	119.8	171.7	291.5	15.3	41.1
Other child of family head	283.9	53.3	337.3	54.6	* 1.0	55.5	392.8	41.0	433.8	14.1	90.6
Other relative of family head	28.6	* 4.6	33.1	* 2.8	* 0.0	* 2.8	36.0	46.5	82.5	* 7.9	43.6
<i>Not a member of a family</i>	309.6	53.9	363.4	39.9	* 3.0	43.0	406.4	334.3	740.8	10.6	54.9
Living alone	140.1	25.4	165.4	17.6	* 1.0	18.6	184.0	276.6	460.6	10.1	39.9
Not living alone	169.5	28.5	198.0	22.4	* 2.1	24.4	222.4	57.8	280.2	11.0	79.4
<i>Not family coded</i>	60.6	21.9	82.5	9.2	* 0.3	9.5	92.1	164.4	256.5	10.4	35.9
Total	2,022.7	611.7	2,634.4	216.2	38.9	255.1	2,889.5	1,861.6	4,751.1	8.8	60.8

(a) Excludes persons aged 20-24 attending school.

TABLE 6. EMPLOYED PERSONS: STATUS IN EMPLOYMENT (a), NSW
(*000)

Status in employment	Males			Females			Persons		
	August 1993	May 1994	August 1994	August 1993	May 1994	August 1994	August 1993	May 1994	August 1994
Employees	1,183.1	1,252.0	1,252.2	958.3	1,017.3	984.6	2,141.4	2,269.3	2,236.8
Employers	76.8	77.0	72.3	35.6	37.5	34.3	112.4	114.5	106.6
Own account workers	183.7	166.2	182.0	85.0	71.3	80.7	268.7	237.5	262.7
Total employed (b)	1,453.0	1,504.8	1,519.8	1,091.8	1,140.6	1,114.6	2,544.8	2,645.4	2,634.4

(a) Status in Employment replaces the previous term Status of Worker. No definitional changes have been made - the only changes are to the classification titles. (b) Includes contributing family workers.

TABLE 7. EMPLOYED PERSONS: AGE, NSW
(^{'000})

Month	Age group (years)								Total employed
	15-19	20-24	25-34	35-44	45-54	55-59	60-64	65 and over	
MALES									
1993—									
August	83.6	162.9	382.0	380.6	298.6	80.0	43.8	21.4	1,453.0
1994—									
May	91.7	173.2	382.9	375.8	307.8	95.2	47.3	30.9	1,504.8
June	92.9	173.9	388.3	379.0	308.3	87.9	48.1	30.8	1,509.1
July	99.2	176.2	392.0	383.7	311.4	89.3	48.2	28.7	1,528.8
August	94.9	179.8	387.0	384.6	307.3	89.4	49.7	27.0	1,519.8
MARRIED FEMALES									
1993—									
August	* 0.8	32.0	178.3	230.3	167.0	31.8	8.7	6.2	655.1
1994—									
May	* 1.5	43.7	193.3	224.5	176.9	39.7	11.8	7.0	698.3
June	* 1.4	39.3	193.7	221.6	175.9	36.8	12.8	6.3	687.7
July	* 2.3	39.4	198.7	219.8	171.1	35.0	11.1	6.6	683.9
August	* 3.0	41.2	191.7	224.4	166.6	33.0	11.1	6.7	677.6
ALL FEMALES									
1993—									
August	79.9	150.8	281.9	293.8	215.9	44.1	14.0	11.4	1,091.8
1994—									
May	89.8	161.7	290.5	291.8	226.2	52.6	16.3	11.7	1,140.6
June	90.8	159.1	287.7	285.4	225.3	51.4	16.5	10.1	1,126.3
July	95.5	161.9	295.7	284.2	222.7	52.6	14.4	10.5	1,137.6
August	89.4	158.8	289.3	289.5	214.1	48.0	13.9	11.4	1,114.6
PERSONS									
1993—									
August	163.4	313.7	663.9	674.5	514.5	124.1	57.8	32.8	2,544.8
1994—									
May	181.6	334.9	673.4	667.6	534.0	147.8	63.6	42.6	2,645.4
June	183.7	333.0	675.9	664.5	533.6	139.2	64.6	40.9	2,635.4
July	194.7	338.1	687.8	668.0	534.1	141.8	62.6	39.2	2,666.4
August	184.4	338.6	676.3	674.2	521.4	137.5	63.7	38.4	2,634.4

ANNUAL CHANGE IN EMPLOYMENT BY AGE, NSW,
AUGUST 1993 TO AUGUST 1994

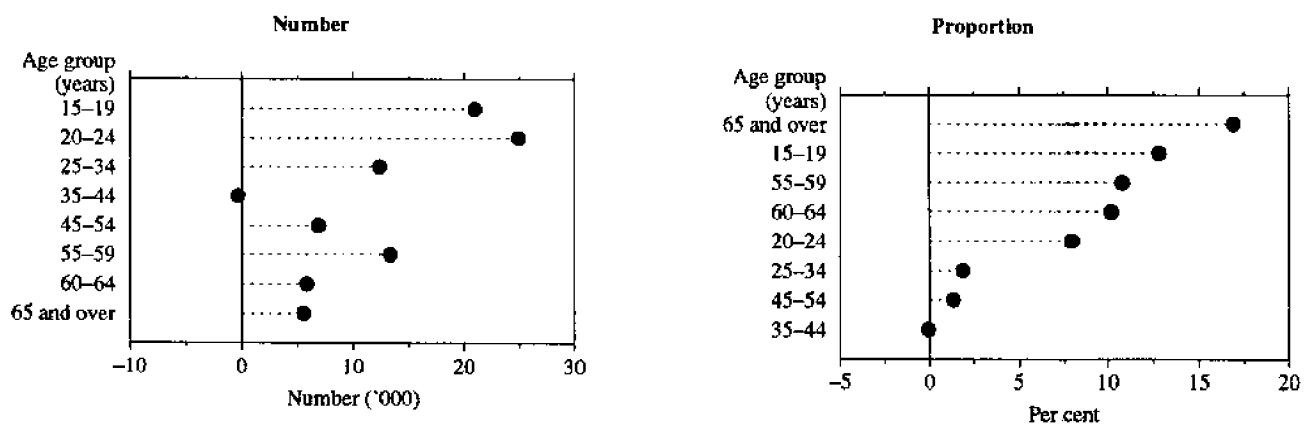


TABLE 8. EMPLOYED PERSONS: INDUSTRY (a), NSW, AUGUST 1994
(^{'000})

Industry division and subdivision	Males	Females	Persons
<i>Agriculture, forestry and fishing</i>	80.7	35.8	116.4
Agriculture	71.2	34.2	105.4
Services to agriculture; hunting and trapping	* 3.7	* 1.2	* 4.9
Forestry and logging	* 3.5	* 0.3	* 3.8
Commercial fishing	* 2.2	* 0.0	* 2.2
<i>Mining</i>	21.5	* 1.6	23.1
Coal mining	15.2	* 0.6	15.9
Oil and gas extraction	* 0.6	* 0.0	* 0.6
Metal ore mining	* 1.2	* 0.0	* 1.2
Other mining	* 3.9	* 0.7	* 4.6
Services to mining	* 0.5	* 0.3	* 0.8
<i>Manufacturing</i>	271.0	111.4	382.4
Food, beverage and tobacco manufacturing	37.4	20.1	57.5
Textile, clothing, footwear and leather manufacturing	11.7	20.2	31.8
Wood and paper product manufacturing	16.4	* 3.9	20.3
Printing, publishing and recorded media	24.6	17.7	42.3
Petroleum, coal, chemical and associated product manufacturing	23.2	12.4	35.6
Non-metallic mineral product manufacturing	16.9	* 2.1	18.9
Metal product manufacturing	62.5	10.6	73.1
Machinery and equipment manufacturing	62.9	16.0	78.9
Other manufacturing	15.4	8.5	23.9
<i>Electricity, gas and water supply</i>	31.6	5.9	37.4
Electricity and gas supply	22.3	* 4.0	26.3
Water supply, sewerage and drainage services	9.2	* 1.9	11.1
<i>Construction</i>	159.4	19.5	178.9
General construction	53.4	6.8	60.3
Construction trade services	106.0	12.7	118.7
<i>Wholesale trade</i>	125.1	55.3	180.4
Basic material wholesaling	36.0	11.1	47.1
Machinery and motor vehicle wholesaling	51.6	18.3	69.8
Personal and household good wholesaling	37.5	26.0	63.5
<i>Retail trade</i>	188.6	182.5	371.1
Food Retailing	62.8	73.1	135.9
Personal and household good Retailing	58.5	93.7	152.2
Motor vehicle retailing and services	67.3	15.7	83.0
<i>Accommodation, cafes and restaurants</i>	65.4	66.6	132.0
<i>Transport and storage</i>	101.2	29.6	130.8
Road transport	55.4	8.4	63.8
Rail transport	18.9	* 1.7	20.5
Water transport	* 1.3	* 0.3	* 1.6
Air and Space transport	8.3	* 4.9	13.3
Other transport	* 1.9	* 0.0	* 1.9
Services to transport	10.8	13.3	24.1
Storage	* 4.5	* 1.0	5.5
<i>Communication services</i>	30.4	14.0	44.3
<i>Finance and insurance</i>	50.6	73.4	124.0
Finance	27.6	45.1	72.7
Insurance	12.7	16.3	29.0
Services to finance and insurance	10.4	11.9	22.3
<i>Property and business services</i>	136.3	111.7	248.0
Property services	19.4	14.5	33.9
Business services	116.9	97.2	214.1
<i>Government administration and defence</i>	62.3	40.9	103.2
Government administration	55.0	39.7	94.8
Defence	7.3	* 1.2	8.4
<i>Education</i>	63.4	118.6	182.0
<i>Health and community services</i>	57.5	176.9	234.3
Health services	46.3	135.1	181.3
Community services	11.2	41.8	53.0
<i>Cultural and recreational services</i>	30.9	27.8	58.7
Motion picture, radio and television services	12.5	* 5.3	17.8
Libraries, museums and the arts	6.6	9.8	16.4
Sport and recreation	11.7	12.7	24.5
<i>Personal and other services</i>	44.0	43.3	87.2
Personal services	11.8	25.0	36.7
Other services	31.6	15.5	47.1
Private households employing staff	* 0.6	* 2.8	* 3.4
Total employed	1,519.8	1,114.6	2,634.4

(a) Industry data are now classified according to the Australian and New Zealand Standard Industrial Classification. See the Explanatory Notes for more details.

EMPLOYMENT BY INDUSTRY DIVISION, NSW, AUGUST 1994

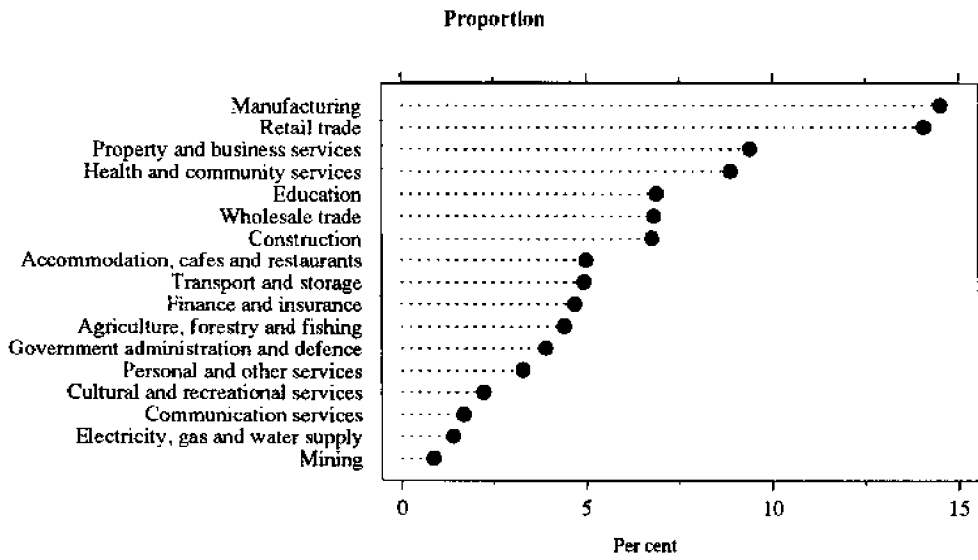
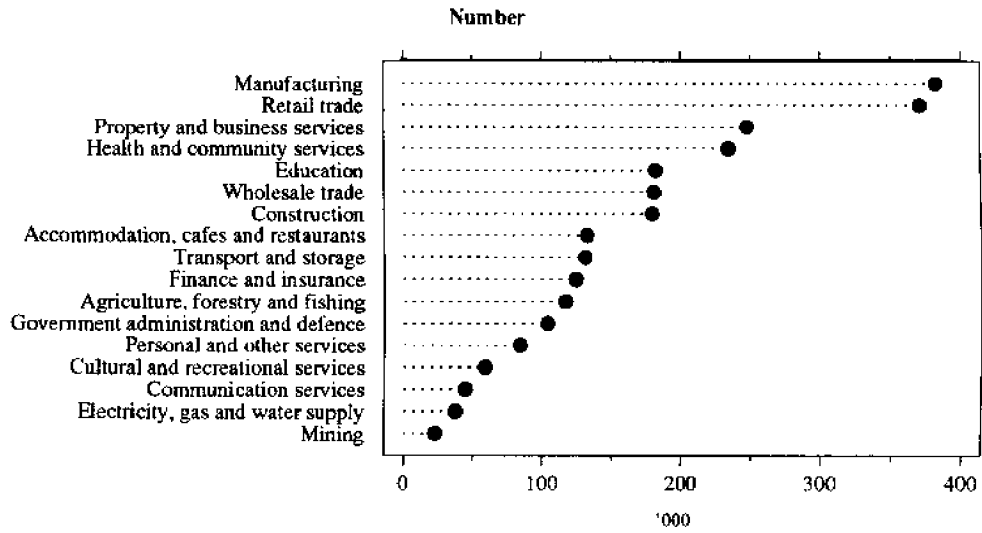


TABLE 9. EMPLOYED PERSONS: OCCUPATION, NSW
(^{'000})

Major and minor occupation group	Males			Females			Persons		
	August 1993	May 1994	August 1994	August 1993	May 1994	August 1994	August 1993	May 1994	August 1994
<i>Managers and administrators</i>	229.2	221.7	226.6	82.4	72.1	81.2	311.6	293.8	307.8
Legislators and government appointed officials	* 0.3	* 0.0	* 0.0	* 0.3	* 0.3	* 0.0	* 0.7	* 0.3	* 0.0
General managers	10.0	10.8	16.2	* 3.1	* 2.8	* 3.3	13.1	13.6	19.5
Specialist managers	54.6	52.0	55.4	16.9	12.4	14.5	71.5	64.4	69.9
Farmers and farm managers	57.0	45.7	50.0	22.4	19.7	21.6	79.3	65.4	71.5
Managing supervisors (sales and service)	66.6	75.0	71.6	34.1	35.1	39.9	100.7	110.1	111.5
Managing supervisors (other business)	40.7	38.2	33.4	5.5	* 1.8	* 1.9	46.2	40.0	35.3
<i>Professionals</i>	194.5	213.2	218.4	163.2	163.1	167.2	357.6	376.2	385.6
Natural scientists	5.5	7.6	8.6	* 3.1	* 4.9	* 4.6	8.6	12.5	13.2
Building professionals and engineers	34.9	37.5	41.2	* 0.6	* 0.6	* 1.2	35.5	38.1	42.4
Health diagnosis and treatment practitioners	18.6	20.2	20.7	18.2	13.4	11.9	36.7	33.7	32.6
School teachers	25.9	25.0	26.5	63.9	59.7	61.7	89.7	84.7	88.2
Other teachers and instructors	16.2	17.1	14.6	17.5	21.6	17.4	33.7	38.7	32.0
Social professionals	17.9	17.6	15.5	8.9	6.2	6.8	26.7	23.8	22.3
Business professionals	55.3	66.6	66.2	31.7	32.1	37.5	87.0	98.7	103.7
Artists and related professionals	13.8	14.0	16.0	10.0	11.6	14.0	23.9	25.6	30.0
Miscellaneous professionals	6.4	7.6	9.1	9.3	12.9	12.1	15.7	20.5	21.2
<i>Para-professionals</i>	72.7	79.7	73.6	74.5	82.0	73.7	147.2	161.7	147.3
Medical and science technical officers and technicians	* 4.9	* 4.2	5.7	* 3.7	* 5.1	5.7	8.6	9.3	11.5
Engineering and building associates and technicians	25.3	24.6	21.5	* 1.3	* 1.7	* 1.2	26.6	26.3	22.7
Air and sea transport technical workers	* 3.2	* 4.0	* 3.5	* 0.0	* 0.0	* 0.0	* 3.2	* 4.0	* 3.5
Registered nurses	* 3.6	5.3	* 4.2	49.8	56.7	50.4	53.4	62.0	54.6
Police	10.1	12.6	9.1	* 1.6	* 2.4	* 1.5	11.7	14.9	10.6
Miscellaneous para-professionals	25.6	29.0	29.5	18.1	16.1	14.9	43.7	45.2	44.3
<i>Tradespersons</i>	333.6	318.3	324.6	40.1	33.6	38.5	373.7	352.0	363.1
Metal fitting and machining tradespersons	39.3	29.7	36.7	* 0.0	* 0.8	* 0.3	39.3	30.5	37.0
Other metal tradespersons	26.0	31.0	30.6	* 0.6	* 0.3	* 0.3	26.6	31.3	30.8
Electrical and electronics tradespersons	63.8	56.3	55.1	* 1.3	* 0.9	* 0.6	65.1	57.2	55.7
Building tradespersons	85.6	74.3	75.9	* 1.5	* 0.6	* 1.2	87.1	74.9	77.2
Printing tradespersons	9.4	9.0	10.8	* 2.1	* 1.5	* 2.2	11.5	10.5	13.0
Vehicle tradespersons	43.5	40.8	44.3	* 0.0	* 0.0	* 0.3	43.5	40.8	44.6
Food tradespersons	21.3	33.0	33.3	12.8	11.9	11.5	34.2	44.9	44.8
Amenity horticultural tradespersons	15.4	16.0	11.9	* 1.3	* 1.3	* 1.5	16.6	17.3	13.4
Miscellaneous tradespersons	29.3	28.2	26.1	20.5	16.3	20.6	49.8	44.6	46.7
<i>Clerks</i>	95.4	103.3	103.8	342.3	365.8	345.7	437.7	469.1	449.5
Stenographers and typists	* 1.9	* 1.6	* 3.1	87.9	97.4	92.8	89.8	99.0	95.9
Data processing and business machine operators	9.0	9.8	7.9	24.5	28.4	35.2	33.5	38.3	43.2
Numerical clerks	34.6	36.8	41.2	109.6	116.2	110.3	144.2	152.9	151.5
Filing, sorting and copying clerks	9.4	9.2	6.1	19.5	24.6	20.6	28.9	33.9	26.7
Material recording and despatching clerks	13.5	14.9	17.2	9.2	6.2	7.2	22.8	21.1	24.4
Receptionists, telephonists and messengers	7.6	12.0	13.7	60.3	61.8	54.3	67.9	73.7	68.0
Miscellaneous clerks	19.3	19.0	14.6	31.3	31.2	25.2	50.7	50.2	39.8
<i>Salespersons and personal service workers</i>	133.1	151.0	148.3	246.1	260.9	260.1	379.2	411.9	408.3
Investment, insurance and real estate salespersons	21.5	21.5	21.5	6.1	6.2	10.1	27.5	27.7	31.6
Sales representatives	31.6	28.3	27.7	12.7	13.0	12.5	44.3	41.2	40.2
Sales assistants	42.5	62.7	59.7	107.7	118.8	107.9	150.2	181.5	167.6
Tellers, cashiers and ticket salespersons	9.6	8.9	11.0	39.4	34.7	36.8	49.0	43.5	47.9
Miscellaneous salespersons	23.1	24.2	22.9	42.0	43.4	45.2	65.0	67.6	68.1
Personal service workers	* 4.8	5.5	5.4	38.3	44.8	47.5	43.1	50.3	52.9
<i>Plant and machine operators, and drivers</i>	141.6	150.1	152.1	26.1	28.0	19.6	167.6	178.1	171.7
Road and rail transport drivers	80.4	80.4	81.0	* 4.8	7.4	* 3.2	85.2	87.9	84.2
Mobile plant operators (except transport)	30.7	32.2	36.8	* 0.0	* 0.3	* 0.3	30.7	32.5	37.1
Stationary plant operators	12.8	17.0	14.7	* 1.3	* 0.6	* 0.3	14.1	17.6	15.0
Machine operators	17.7	20.4	19.6	19.9	19.7	15.8	37.6	40.1	35.4
<i>Labourers and related workers</i>	252.9	267.4	272.4	117.2	135.2	128.6	370.1	402.5	401.0
Trades assistants and factory hands	66.1	77.6	70.4	32.3	29.9	32.1	98.4	107.5	102.5
Agricultural labourers and related workers	32.8	30.2	30.3	9.0	8.0	7.1	41.7	38.2	37.5
Cleaners	25.3	22.7	29.6	35.3	43.9	38.5	60.6	66.6	68.2
Construction and mining labourers	39.2	48.1	41.2	* 0.7	* 0.3	* 1.0	39.9	48.4	42.1
Miscellaneous labourers and related workers	89.5	88.8	100.9	40.0	53.0	49.9	129.5	141.8	150.9
Total employed	1,453.0	1,504.8	1,519.8	1,091.8	1,140.6	1,114.6	2,544.8	2,645.4	2,634.4

ANNUAL CHANGE IN EMPLOYMENT BY OCCUPATION GROUP, NSW,
AUGUST 1993 TO AUGUST 1994

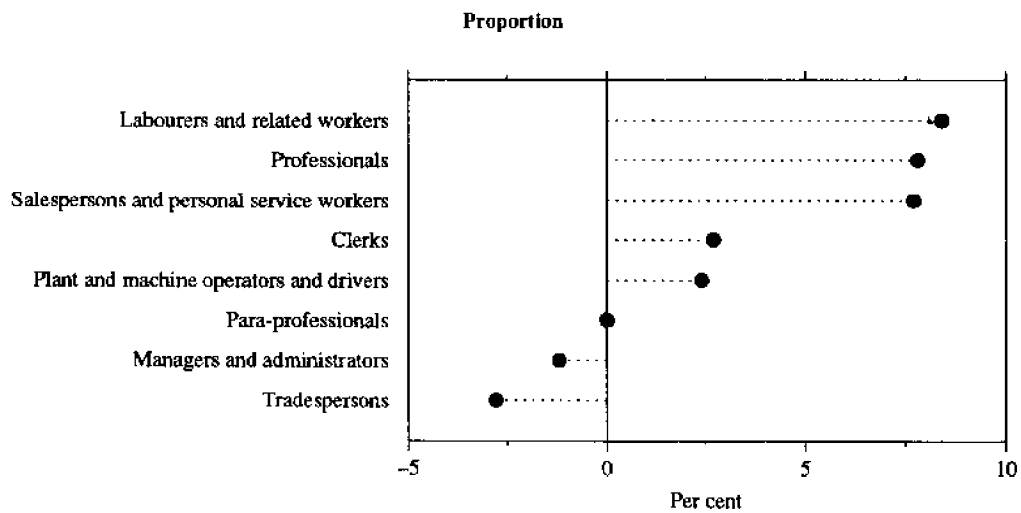
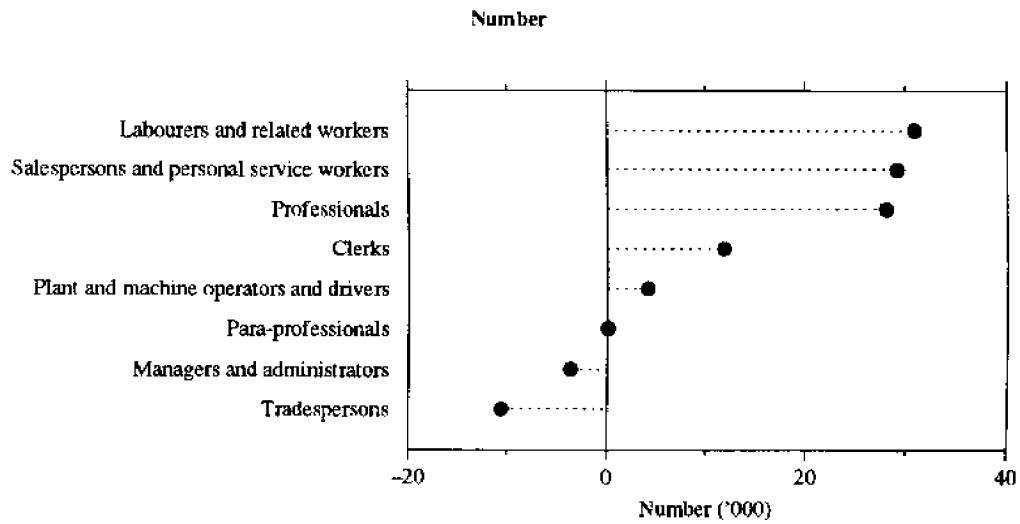


TABLE 10. UNEMPLOYED PERSONS: AGE, NSW
(*000)

Month	Age group (years)						Total unemployed
	15-19	20-24	25-34	35-44	45-54	55 and over	
MALES							
1993—							
August	22.6	35.1	54.2	33.7	19.9	23.8	189.4
1994—							
May	27.0	31.9	42.9	33.1	21.0	16.9	172.8
June	27.9	26.3	43.5	30.8	21.7	19.7	169.8
July	21.4	28.3	36.6	30.7	20.5	17.7	155.2
August	21.3	29.2	40.2	28.7	19.9	14.4	153.8
FEMALES							
1993—							
August	20.7	20.8	27.5	21.6	15.3	* 3.3	109.3
1994—							
May	22.4	20.4	25.5	15.8	14.8	* 4.6	103.5
June	22.0	20.9	28.7	22.1	13.6	* 4.0	111.3
July	24.7	18.4	28.6	23.9	12.5	* 3.4	111.5
August	22.5	20.5	23.6	19.5	12.1	* 3.2	101.4
PERSONS							
1993—							
August	43.3	56.0	81.7	55.4	35.2	27.1	298.7
1994—							
May	49.3	52.3	68.5	49.0	35.8	21.5	276.2
June	49.9	47.2	72.2	52.9	35.3	23.7	281.1
July	46.1	46.7	65.1	54.6	33.1	21.1	266.7
August	43.8	49.7	63.8	48.2	32.0	17.7	255.1

TABLE 11. UNEMPLOYED PERSONS: UNEMPLOYMENT RATE BY AGE, NSW
(per cent)

Month	Age group (years)						Total unemployment rate
	15-19	20-24	25-34	35-44	45-54	55 and over	
MALES							
1993—							
August	21.3	17.7	12.4	8.1	6.2	14.1	11.5
1994—							
May	22.7	15.6	10.1	8.1	6.4	8.9	10.3
June	23.1	13.1	10.1	7.5	6.6	10.6	10.1
July	17.8	13.8	8.5	7.4	6.2	9.6	9.2
August	18.4	14.0	9.4	6.9	6.1	8.0	9.2
FEMALES							
1993—							
August	20.6	12.1	8.9	6.9	6.6	* 4.5	9.1
1994—							
May	19.9	11.2	8.1	5.1	6.1	5.4	8.3
June	19.5	11.6	9.1	7.2	5.7	* 4.9	9.0
July	20.5	10.2	8.8	7.7	5.3	* 4.2	8.9
August	20.1	11.4	7.5	6.3	5.3	* 4.2	8.3
PERSONS							
1993—							
August	21.0	15.1	11.0	7.6	6.4	11.2	10.5
1994—							
May	21.4	13.5	9.2	6.8	6.3	7.8	9.5
June	21.4	12.4	9.6	7.4	6.2	8.8	9.6
July	19.2	12.1	8.7	7.6	5.8	8.0	9.1
August	19.2	12.8	8.6	6.7	5.8	6.9	8.8

TABLE 12. UNEMPLOYED PERSONS: INDUSTRY (a) AND OCCUPATION OF LAST FULL-TIME JOB, NSW, AUGUST 1994 ('000)

	Males	Females	Persons
<i>Had worked for two weeks or more in a full-time job in the last two years</i>	80.0	30.2	110.2
Industry division—			
Agriculture, forestry and fishing	* 2.0	* 1.0	* 3.0
Manufacturing	21.0	* 4.4	25.4
Construction	12.3	* 0.6	12.9
Wholesale trade	5.7	* 0.9	6.6
Retail trade	12.3	11.0	23.4
Accommodation, cafes and restaurants	* 3.3	* 2.0	5.3
Transport and storage	* 4.5	* 0.0	* 4.5
Finance and insurance	* 2.2	* 0.6	* 2.9
Property and business services	* 4.6	* 2.5	7.1
Education	* 1.6	* 0.3	* 1.9
Health and community services	* 0.6	* 2.3	* 2.9
Cultural and recreational services	* 1.3	* 1.2	* 2.5
Personal and other services	* 1.3	* 2.4	* 3.8
Other industries (b)	7.1	* 0.9	8.1
Major occupation group—			
Managers and administrators	* 4.5	* 1.0	5.5
Professionals	6.8	* 2.4	9.2
Para-professionals	* 1.2	* 0.6	* 1.9
Tradespersons	17.3	* 2.0	19.2
Clerks	* 3.6	* 4.6	8.2
Salespersons and personal service workers	6.6	12.8	19.4
Plant and machine operators, and drivers	8.7	* 1.2	9.9
Labourers and related workers	31.4	5.6	36.9
<i>Had not worked full-time for two weeks or more in the last two years</i>	72.9	69.5	142.4
Looking for first job	16.8	15.9	32.7
Had worked at some time in the past	56.1	53.7	109.7
<i>Stood down</i>	* 0.9	* 1.6	* 2.5
Total unemployed	153.8	101.4	255.1

(a) Industry data are now classified according to the Australian and New Zealand Standard Industrial Classification. See the Explanatory Notes for more details. (b) Comprises Mining, Electricity, gas and water supply; Communication services; and Government administration and defence

UNEMPLOYMENT RATE BY AGE, NSW

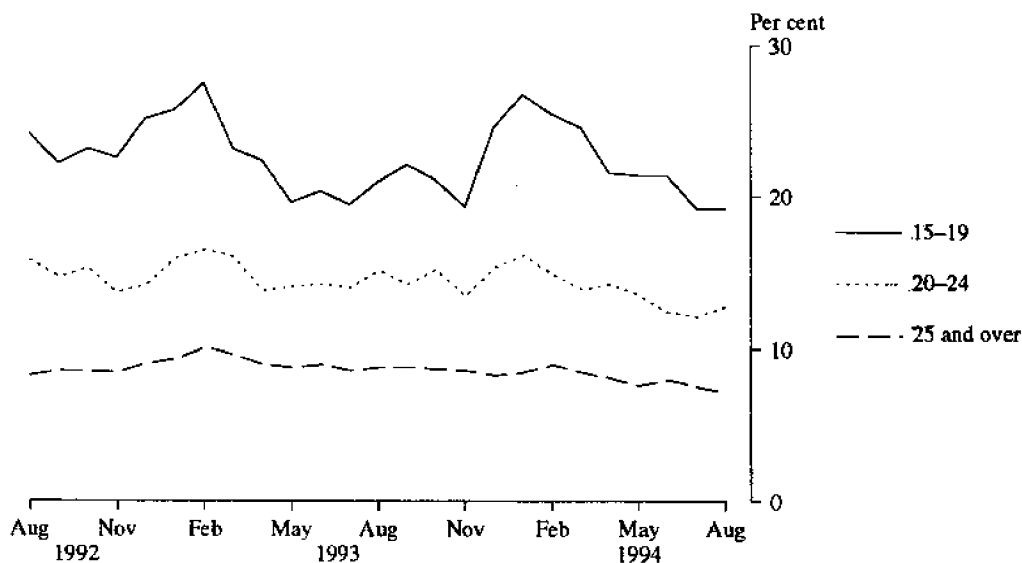


TABLE 13. UNEMPLOYED PERSONS: DURATION OF UNEMPLOYMENT, NSW

Duration of unemployment (weeks)	Males		Females		Persons				
	August 1993	August 1994	August 1993	August 1994	August 1993	May 1994	June 1994	July 1994	August 1994
	— '000 —								
Under 52	115.1	92.7	76.4	62.8	191.5	169.3	173.1	164.1	155.5
Under 2	7.9	* 4.7	8.3	* 4.0	16.2	12.2	16.5	11.9	8.7
2 and under 4	11.3	7.1	9.8	6.2	21.1	18.9	18.2	24.9	13.3
4 and under 8	17.6	15.3	13.3	11.1	30.9	20.5	19.4	24.6	26.4
8 and under 13	13.4	11.1	7.8	6.8	21.2	21.9	23.2	16.9	17.9
13 and under 26	25.9	18.8	12.8	11.8	38.7	58.9	51.2	36.1	30.6
26 and under 39	28.1	28.6	18.6	19.6	46.8	24.3	32.1	37.3	48.2
39 and under 52	10.9	7.0	5.8	* 3.3	16.6	12.6	12.4	12.2	10.3
52 and over	74.3	61.1	32.9	38.5	107.2	107.0	108.0	102.6	99.6
52 and under 104	31.4	24.5	16.3	19.6	47.7	48.3	47.9	42.8	44.1
104 and over	42.9	36.6	16.6	18.9	59.5	58.7	60.0	59.8	55.5
Total unemployed	189.4	153.8	109.3	101.4	298.7	276.2	281.1	266.7	255.1
	— Weeks —								
Average	62.4	72.0	51.6	56.3	58.5	63.4	65.0	68.7	65.8
Median	32	32	26	29	30	26	26	30	30

TABLE 14. UNEMPLOYED PERSONS: UNEMPLOYMENT RATE BY BIRTHPLACE AND PERIOD OF ARRIVAL, NSW (per cent)

	August 1993	May 1994	June 1994	July 1994	August 1994
Birthplace—					
Australia	9.4	8.5	8.8	8.5	8.4
Outside Australia	13.7	12.2	12.0	10.8	10.0
Main English speaking countries	9.3	7.3	6.4	6.0	6.6
Other countries	16.0	14.9	15.0	13.3	11.8
Period of arrival of overseas born—					
Before 1961	10.5	6.7	6.3	* 2.5	* 3.5
1961–1970	11.5	10.2	9.5	8.6	8.9
1971–1980	10.9	10.4	9.8	11.1	9.8
1981–1985	11.2	11.3	11.7	11.5	13.0
1986–1990	16.6	13.8	13.0	12.1	7.9
1991 to survey date	40.1	29.2	31.9	24.7	23.8
Total unemployment rate	10.5	9.5	9.6	9.1	8.8

UNEMPLOYMENT RATE BY PERIOD OF ARRIVAL OF OVERSEAS BORN, NSW, AUGUST 1994

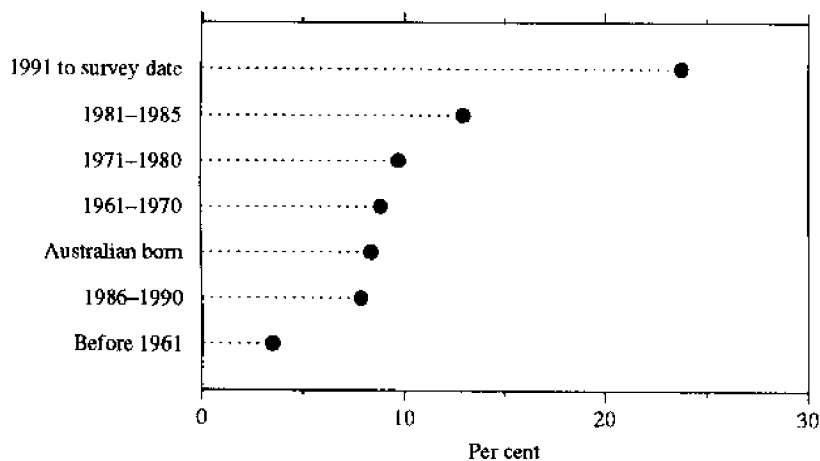


TABLE 15. UNEMPLOYED PERSONS: DURATION OF UNEMPLOYMENT BY AGE, NSW

Month	Duration of unemployment (weeks)					Total unemployed persons ('000)	Average duration (weeks)	Median duration (weeks)
	Under 13 ('000)	13 and under 26 ('000)	26 and under 39 ('000)	39 and under 104 ('000)	104 and over ('000)			
15-19								
1993—								
August	15.8	* 5.2	13.3	8.4	* 0.6	43.3	25.7	26
1994—								
June	15.6	13.8	11.3	6.8	* 2.4	49.9	29.1	21
July	20.2	5.7	10.3	7.5	* 2.5	46.1	28.4	16
August	16.6	* 5.1	11.8	7.5	* 2.8	43.8	30.4	26
22-24								
1993—								
August	19.1	10.5	5.8	10.2	10.3	56.0	48.3	21
1994—								
June	15.0	9.3	* 4.4	8.5	10.0	47.2	53.4	24
July	14.1	9.4	* 4.5	7.6	11.1	46.7	63.1	23
August	12.3	6.5	11.1	9.8	9.9	49.7	58.8	30
25-34								
1993—								
August	24.6	11.7	11.2	18.8	15.4	81.7	51.5	27
1994—								
June	20.1	13.8	6.5	17.4	14.5	72.2	60.8	30
July	16.3	8.2	9.7	15.6	15.3	65.1	69.6	35
August	16.6	7.3	11.5	14.0	14.4	63.8	68.7	30
35-44								
1993—								
August	17.8	5.4	8.5	12.0	11.5	55.4	59.9	28
1994—								
June	14.8	7.7	* 4.6	13.2	12.5	52.9	80.1	32
July	16.0	5.9	8.0	12.1	12.6	54.6	68.9	34
August	10.9	6.2	8.5	10.6	12.1	48.2	69.9	34
45 AND OVER								
1993—								
August	12.1	5.8	7.9	14.9	21.6	62.3	98.3	53
1994—								
June	11.9	6.6	5.4	14.5	20.6	59.0	96.2	53
July	11.8	7.0	* 4.8	12.2	18.3	54.1	106.9	50
August	9.9	5.6	5.3	12.5	16.3	49.6	96.2	52
TOTAL								
1993—								
August	89.4	38.7	46.8	64.3	59.5	298.7	58.5	30
1994—								
June	77.4	51.2	32.1	60.4	60.0	281.1	65.0	26
July	78.4	36.1	37.3	55.1	59.8	266.7	68.7	30
August	66.4	30.6	48.2	54.4	55.5	255.1	65.8	30

TABLE 16. LABOUR FORCE STATUS, SYDNEY (MSR)

Month	Employed			Unemployed			Labour force ('000)	Not in labour force ('000)	Civilian population aged 15 and over ('000)	Unemployment rate (per cent)	Participation rate (per cent)
	Full-time workers ('000)	Part-time workers ('000)	Total ('000)	Looking for full-time work ('000)	Looking for part-time work ('000)	Total ('000)					
MALES											
August—											
1990	917.0	76.2	993.2	54.7	6.7	61.4	1,054.6	353.8	1,408.4	5.8	74.9
1991	883.0	83.1	966.1	88.5	7.8	96.2	1,062.4	361.7	1,424.1	9.1	74.6
1992	856.3	90.0	946.4	103.2	10.9	114.1	1,060.4	379.3	1,439.7	10.8	73.7
1993—											
June	857.3	93.6	950.8	101.5	8.8	110.2	1,061.1	388.9	1,450.0	10.4	73.2
July	863.5	84.8	948.2	103.5	10.9	114.4	1,062.7	388.4	1,451.1	10.8	73.2
August	853.2	85.2	938.4	96.1	12.4	108.5	1,046.8	405.3	1,452.2	10.4	72.1
1994—											
May	876.7	101.1	977.8	92.5	9.7	102.2	1,080.0	382.4	1,462.4	9.5	73.8
June	879.4	105.6	985.0	86.5	9.6	96.1	1,081.0	382.7	1,463.8	8.9	73.9
July	899.0	98.9	997.9	78.5	9.3	87.8	1,085.7	379.2	1,465.0	8.1	74.1
August	880.6	111.8	992.4	80.6	9.1	89.7	1,082.2	384.0	1,466.2	8.3	73.8
MARRIED FEMALES											
August—											
1990	240.3	162.6	402.9	8.3	6.8	15.1	417.9	385.1	803.1	3.6	52.0
1991	238.6	169.0	407.6	17.5	8.3	25.8	433.4	391.5	824.9	6.0	52.5
1992	235.6	186.5	422.1	17.2	6.9	24.1	446.2	379.2	825.4	5.4	54.1
1993—											
June	242.9	165.2	408.0	19.0	10.1	29.1	437.1	388.4	825.5	6.7	52.9
July	239.8	165.7	405.4	17.2	8.3	25.5	430.9	380.6	811.5	5.9	53.1
August	240.7	177.2	417.9	18.4	9.3	27.7	445.6	378.2	823.8	6.2	54.1
1994—											
May	265.6	184.9	450.5	19.7	8.2	27.9	478.4	369.8	848.2	5.8	56.4
June	261.1	176.3	437.4	19.1	8.0	27.1	464.4	381.8	846.2	5.8	54.9
July	265.2	169.5	434.8	18.5	8.2	26.7	461.5	376.1	837.6	5.8	55.1
August	255.6	179.1	434.7	13.8	7.1	21.0	455.7	390.1	845.8	4.6	53.9
ALL FEMALES											
August—											
1990	481.4	239.4	720.8	25.8	14.0	39.8	760.6	707.7	1,468.3	5.2	51.8
1991	464.7	246.7	711.4	42.0	18.1	60.1	771.5	714.6	1,486.0	7.8	51.9
1992	448.3	276.3	724.6	50.0	18.1	68.2	792.8	709.5	1,502.3	8.6	52.8
1993—											
June	474.0	250.1	724.1	45.1	18.7	63.7	787.9	725.1	1,513.0	8.1	52.1
July	474.3	247.5	721.8	43.4	19.2	62.6	784.5	729.6	1,514.1	8.0	51.8
August	463.9	261.8	725.7	49.2	19.5	68.7	794.4	720.8	1,515.2	8.6	52.4
1994—											
May	482.5	292.5	774.9	43.6	18.1	61.7	836.6	689.2	1,525.8	7.4	54.8
June	485.1	276.8	761.9	42.5	20.0	62.5	824.4	702.8	1,527.2	7.6	54.0
July	494.7	269.8	764.4	49.2	17.9	67.1	831.5	697.0	1,528.5	8.1	54.4
August	478.9	275.0	753.9	39.4	16.5	55.9	809.8	720.0	1,529.8	6.9	52.9
PERSONS											
August—											
1990	1,398.4	315.6	1,714.0	80.5	20.7	101.2	1,815.2	1,061.5	2,876.7	5.6	63.1
1991	1,347.7	329.8	1,677.5	130.5	25.9	156.3	1,833.8	1,076.3	2,910.1	8.5	63.0
1992	1,304.7	366.3	1,671.0	153.2	29.0	182.2	1,853.2	1,088.8	2,942.0	9.8	63.0
1993—											
June	1,331.2	343.7	1,674.9	146.6	27.4	174.0	1,848.9	1,114.0	2,962.9	9.4	62.4
July	1,337.8	332.2	1,670.1	146.9	30.1	177.1	1,847.1	1,118.0	2,965.1	9.6	62.3
August	1,317.1	347.0	1,664.1	145.3	31.9	177.2	1,841.2	1,126.1	2,967.3	9.6	62.0
1994—											
May	1,359.2	393.6	1,752.8	136.0	27.8	163.8	1,916.6	1,071.6	2,988.2	8.5	64.1
June	1,364.5	382.4	1,746.9	129.0	29.5	158.6	1,905.5	1,085.5	2,991.0	8.3	63.7
July	1,393.6	368.7	1,762.3	127.7	27.2	154.9	1,917.2	1,076.3	2,993.5	8.1	64.0
August	1,359.5	386.8	1,746.3	120.1	25.6	145.7	1,892.0	1,104.1	2,996.1	7.7	63.1

TABLE 17. LABOUR FORCE STATUS, BALANCE OF NSW (MSR)

Month	Employed		Unemployed				Labour force ('000)	Not in labour force ('000)	Civilian population aged 15 and over ('000)	Unemployment rate (per cent)	Participation rate (per cent)
	Full-time workers ('000)	Part-time workers ('000)	Total ('000)	Looking for full-time work ('000)	Looking for part-time work ('000)	Total ('000)					
MALES											
August—											
1990	500.8	45.5	546.4	40.8	* 4.4	45.1	591.5	239.9	831.4	7.6	71.1
1991	501.7	45.1	546.8	58.5	* 3.5	62.0	608.8	233.8	842.7	10.2	72.3
1992	478.0	56.5	534.5	72.4	* 3.3	75.6	610.1	240.4	850.6	12.4	71.7
1993—											
June	465.4	57.2	522.6	76.4	7.3	83.8	606.4	250.3	856.6	13.8	70.8
July	468.6	56.1	524.7	68.9	* 3.2	72.1	596.9	260.5	857.3	12.1	69.6
August	462.6	52.1	514.6	76.9	* 4.0	80.9	595.5	262.5	858.0	13.6	69.4
1994—											
May	475.7	51.3	527.0	67.5	* 3.1	70.6	597.6	266.9	864.5	11.8	69.1
June	465.9	58.1	524.1	69.6	* 4.2	73.8	597.9	267.3	865.2	12.3	69.1
July	468.3	62.6	530.9	63.9	* 3.5	67.4	598.3	267.7	866.0	11.3	69.1
August	465.7	61.6	527.4	60.7	* 3.3	64.0	591.4	275.4	866.8	10.8	68.2
MARRIED FEMALES											
August—											
1990	114.4	121.4	235.9	7.4	* 4.4	11.8	247.7	275.2	522.9	4.8	47.4
1991	127.7	117.5	245.2	8.3	* 3.9	12.2	257.4	270.9	528.3	4.7	48.7
1992	114.4	126.8	241.2	11.9	* 4.4	17.7	258.8	268.8	527.6	6.8	49.0
1993—											
June	114.4	122.7	237.1	12.1	* 4.1	16.1	253.2	259.6	512.8	6.4	49.4
July	118.4	123.8	242.2	8.5	* 4.7	13.3	255.4	261.3	516.7	5.2	49.4
August	116.6	121.1	237.7	12.3	5.3	17.6	255.3	262.2	517.5	6.9	49.3
1994—											
May	132.8	115.0	247.8	10.8	* 3.5	14.4	262.1	281.4	543.6	5.5	48.2
June	135.4	115.0	250.4	14.6	* 5.0	19.6	269.9	281.2	551.2	7.3	49.0
July	132.0	117.1	249.2	13.1	* 4.9	18.0	267.1	273.4	540.6	6.7	49.4
August	129.7	113.2	242.9	12.6	* 4.9	17.5	260.3	277.4	537.7	6.7	48.4
ALL FEMALES											
August—											
1990	190.9	161.8	352.7	22.9	9.7	32.6	385.3	460.3	845.7	8.5	45.6
1991	204.0	161.1	365.1	27.4	9.5	36.8	401.9	456.7	858.6	9.2	46.8
1992	190.6	176.7	367.3	32.4	13.0	45.4	412.7	455.5	868.2	11.0	47.5
1993—											
June	189.3	177.5	366.8	35.0	9.0	43.9	410.7	465.1	875.9	10.7	46.9
July	189.6	178.7	368.2	31.1	7.8	39.0	407.2	469.5	876.7	9.6	46.4
August	190.4	175.7	366.1	29.6	11.0	40.6	406.7	470.7	877.5	10.0	46.4
1994—											
May	199.8	165.8	365.6	30.8	11.0	41.8	407.4	477.9	885.3	10.3	46.0
June	200.6	163.8	364.4	37.2	11.6	48.8	413.2	473.1	886.3	11.8	46.6
July	201.8	171.4	373.2	31.9	12.5	44.4	417.6	469.7	887.3	10.6	47.1
August	197.4	163.3	360.7	35.4	10.1	45.4	406.1	482.1	888.2	11.2	45.7
PERSONS											
August—											
1990	691.7	207.4	899.1	63.7	14.1	77.8	976.8	700.2	1,677.0	8.0	58.2
1991	705.7	206.1	911.9	85.9	13.0	98.9	1,010.7	690.6	1,701.3	9.8	59.4
1992	668.6	233.2	901.8	104.7	16.3	121.1	1,022.9	695.9	1,718.8	11.8	59.5
1993—											
June	654.7	234.7	889.4	111.4	16.3	127.7	1,017.1	715.4	1,732.5	12.6	58.7
July	658.2	234.8	893.0	100.1	11.1	111.1	1,004.1	729.9	1,734.0	11.1	57.9
August	653.0	227.7	880.7	106.5	14.9	121.5	1,002.2	733.3	1,735.5	12.1	57.7
1994—											
May	675.5	217.1	892.6	98.3	14.1	112.4	1,005.0	744.8	1,749.8	11.2	57.4
June	666.5	221.9	888.5	106.8	15.8	122.6	1,011.0	740.5	1,751.5	12.1	57.7
July	670.1	234.0	904.1	95.8	16.0	111.8	1,015.9	737.4	1,753.3	11.0	57.9
August	663.1	224.9	888.0	96.1	13.3	109.5	997.5	757.5	1,755.0	11.0	56.8

TABLE 18. LABOUR FORCE STATUS (a), REGIONS OF NSW

Month		Employed (<i>'000</i>)	Unemployed (<i>'000</i>)	Labour force (<i>'000</i>)	Not in labour force (<i>'000</i>)	Unemp- loyment rate (per cent)	Partici- pation rate (per cent)
INNER SYDNEY AND INNER WESTERN SYDNEY (SRs)							
MALES	1993— August	94.7	11.9	106.6	47.6	11.2	69.2
	1994— June	113.8	10.4	124.2	52.9	8.4	70.1
	July	111.8	12.9	124.7	47.9	10.3	72.2
	August	108.5	10.7	119.2	46.6	9.0	71.9
	FEMALES	1993— August	84.1	6.7	90.7	67.7	7.4
	1994— June	88.6	4.9	93.5	76.0	5.2	55.2
	July	87.5	5.9	93.4	74.4	6.3	55.7
	August	85.3	5.5	90.8	79.2	6.1	53.4
PERSONS	1993— August	178.7	18.6	197.4	115.2	9.4	63.1
	1994— June	202.5	15.3	217.8	128.9	7.0	62.8
	July	199.3	18.7	218.1	122.3	8.6	64.1
	August	193.8	16.2	209.9	125.8	7.7	62.5
	INNER SYDNEY (SR)						
MALES	1993— August	62.7	8.7	71.4	31.0	12.2	69.8
	1994— June	76.8	6.3	83.1	34.2	7.6	70.8
	July	76.5	9.0	85.5	28.7	10.6	74.9
	August	70.7	7.7	78.3	31.9	9.8	71.1
	FEMALES	1993— August	56.4	4.5	61.0	40.8	7.4
	1994— June	51.7	* 3.6	55.2	42.6	* 6.4	56.4
	July	51.5	4.4	55.9	39.4	7.9	58.6
	August	46.9	* 3.6	50.5	44.2	* 7.1	53.3
PERSONS	1993— August	119.1	13.3	132.4	71.8	10.0	64.8
	1994— June	128.4	9.9	138.3	76.8	7.1	64.3
	July	128.0	13.4	141.4	68.1	9.5	67.5
	August	117.6	11.3	128.8	76.0	8.7	62.9
	EASTERN SUBURBS (SR)						
MALES	1993— August	53.8	3.9	57.7	36.4	6.8	61.3
	1994— June	63.7	8.2	71.9	29.6	11.4	70.9
	July	65.3	7.5	72.8	27.4	10.3	72.6
	August	59.3	8.0	67.3	30.9	11.9	68.6
	FEMALES	1993— August	52.9	* 1.9	54.8	53.2	* 3.4
	1994— June	51.8	3.5	55.3	39.8	6.3	58.2
	July	51.7	4.4	56.1	40.8	7.8	57.9
	August	47.0	* 2.8	49.8	46.3	* 5.6	51.9
PERSONS	1993— August	106.7	5.8	112.5	89.6	5.1	55.7
	1994— June	115.5	11.7	127.2	69.3	9.2	64.7
	July	117.0	11.9	128.9	68.3	9.2	65.4
	August	106.4	10.8	117.2	77.1	9.2	60.3

TABLE 18. LABOUR FORCE STATUS (a), REGIONS OF NSW—continued

	Month	Employed (<i>'000</i>)	Unemployed (<i>'000</i>)	Labour force (<i>'000</i>)	Not in labour force (<i>'000</i>)	Unemp- loyment rate (per cent)	Partici- pation rate (per cent)
ST GEORGE-SUTHERLAND (SR)							
MALES	1993—						
	August	117.9	8.4	126.3	42.6	6.7	74.8
	1994—						
	June	118.5	7.4	126.0	39.9	5.9	76.0
	July	116.0	6.7	122.7	41.4	5.5	74.8
	August	114.9	7.4	122.4	41.8	6.1	74.6
FEMALES	1993—						
	August	88.4	5.4	93.8	75.4	5.8	55.4
	1994—						
	June	102.7	* 2.6	105.3	77.1	* 2.5	57.7
	July	102.5	4.5	107.0	75.9	4.2	58.5
	August	96.6	4.8	101.4	80.2	4.7	55.9
PERSONS	1993—						
	August	206.3	13.8	220.1	118.0	6.3	65.1
	1994—						
	June	221.3	10.0	231.3	117.0	4.3	66.4
	July	218.5	11.2	229.7	117.3	4.9	66.2
	August	211.6	12.2	223.8	121.9	5.5	64.7
CANTERBURY-BANKSTOWN (SR)							
MALES	1993—						
	August	71.4	12.7	84.1	38.6	15.1	68.5
	1994—						
	June	71.0	14.1	85.1	28.4	16.6	75.0
	July	71.6	10.5	82.0	29.3	12.8	73.7
	August	73.3	9.9	83.2	33.5	11.9	71.3
FEMALES	1993—						
	August	46.2	7.4	53.6	69.8	13.8	43.5
	1994—						
	June	51.7	8.7	60.4	52.9	14.5	53.3
	July	49.4	5.7	55.1	58.4	10.3	48.5
	August	49.9	4.7	54.5	63.1	8.6	46.4
PERSONS	1993—						
	August	117.6	20.1	137.7	108.4	14.6	55.9
	1994—						
	June	122.7	22.9	145.5	81.2	15.7	64.2
	July	121.0	16.2	137.1	87.7	11.8	61.0
	August	123.2	14.6	137.8	96.6	10.6	58.8
FAIRFIELD-LIVERPOOL AND OUTER SOUTH WESTERN SYDNEY (SRs)							
MALES	1993—						
	August	134.3	20.9	155.2	40.4	13.5	79.3
	1994—						
	June	132.0	17.1	149.1	43.5	11.5	77.4
	July	131.8	15.9	147.7	44.3	10.7	76.9
	August	136.4	17.6	154.0	43.2	11.4	78.1
FEMALES	1993—						
	August	92.0	14.1	106.1	80.6	13.3	56.8
	1994—						
	June	92.5	13.0	105.5	94.0	12.3	52.9
	July	95.2	14.1	109.3	93.0	12.9	54.0
	August	95.8	9.3	105.2	92.8	8.9	53.1
PERSONS	1993—						
	August	226.3	35.0	261.3	121.0	13.4	68.3
	1994—						
	June	224.5	30.1	254.6	137.5	11.8	64.9
	July	227.0	29.9	256.9	137.2	11.7	65.2
	August	232.2	26.9	259.2	136.0	10.4	65.6

TABLE 18. LABOUR FORCE STATUS (a), REGIONS OF NSW—continued

	Month	Employed (<i>'000</i>)	Unemployed (<i>'000</i>)	Labour force (<i>'000</i>)	Not in labour force (<i>'000</i>)	Unemp- loyment rate (per cent)	Partici- pation rate (per cent)
FAIRFIELD-LIVERPOOL (SR)							
MALES	1993— August	82.6	15.9	98.5	25.2	16.2	79.6
	1994— June	73.2	14.6	87.8	29.3	16.7	75.0
	July	72.7	13.6	86.3	30.7	15.7	73.8
	August	74.9	15.0	89.9	28.6	16.7	75.8
FEMALES	1993— August	50.6	11.0	61.6	53.1	17.9	53.7
	1994— June	51.6	9.6	61.2	60.0	15.7	50.5
	July	52.4	11.1	63.5	59.1	17.4	51.8
	August	53.2	7.4	60.7	57.7	12.3	51.2
PERSONS	1993— August	133.1	26.9	160.1	78.3	16.8	67.1
	1994— June	124.8	24.3	149.0	89.3	16.3	62.5
	July	125.1	24.6	149.8	89.7	16.5	62.5
	August	128.1	22.5	150.6	86.4	14.9	63.5
CENTRAL WESTERN SYDNEY (SR)							
MALES	1993— August	50.9	10.3	61.2	32.6	16.8	65.2
	1994— June	56.0	7.9	63.9	32.0	12.3	66.6
	July	57.7	6.6	64.3	31.8	10.2	66.9
	August	56.8	6.1	63.0	33.2	9.8	65.5
FEMALES	1993— August	33.7	9.9	43.6	64.7	22.6	40.3
	1994— June	41.6	7.2	48.8	59.7	14.7	45.0
	July	39.0	9.2	48.1	58.2	19.0	45.3
	August	40.2	6.2	46.3	61.8	13.3	42.9
PERSONS	1993— August	84.7	20.2	104.8	97.3	19.2	51.9
	1994— June	97.7	15.0	112.7	91.7	13.3	55.1
	July	96.7	15.7	112.4	90.1	14.0	55.5
	August	97.0	12.3	109.3	95.0	11.3	53.5
OUTER WESTERN SYDNEY (SR)							
MALES	1993— August	72.2	4.5	76.7	27.3	5.8	73.7
	1994— June	71.5	8.0	79.5	25.3	10.1	75.8
	July	72.4	6.9	79.3	26.6	8.7	74.9
	August	79.3	7.0	86.3	25.3	8.1	77.3
FEMALES	1993— August	48.5	* 1.8	50.3	54.2	* 3.6	48.2
	1994— June	55.7	5.5	61.3	50.2	9.0	55.0
	July	54.1	* 3.5	57.6	51.0	* 6.1	53.1
	August	56.7	5.6	62.4	50.6	9.0	55.2
PERSONS	1993— August	120.7	6.3	127.0	81.5	5.0	60.9
	1994— June	127.2	13.5	140.7	75.5	9.6	65.1
	July	126.6	10.4	137.0	77.6	7.6	63.8
	August	136.1	12.6	148.7	76.0	8.5	66.2

TABLE 18. LABOUR FORCE STATUS (a), REGIONS OF NSW—continued

Month		Employed (<i>'000</i>)	Unemployed (<i>'000</i>)	Labour force (<i>'000</i>)	Not in labour force (<i>'000</i>)	Unemp- loyment rate (per cent)	Partici- pation rate (per cent)
BLACKTOWN—BAULKHAM HILLS (SR)							
MALES	1993— August	86.4	11.4	97.8	29.0	11.7	77.2
	1994— June	92.4	6.8	99.3	30.5	6.9	76.5
	July	94.5	5.3	99.8	30.3	5.3	76.7
	August	92.3	7.1	99.4	35.2	7.1	73.9
FEMALES	1993— August	64.3	7.6	72.0	58.5	10.6	55.2
	1994— June	74.3	4.6	78.8	58.9	5.8	57.2
	July	74.9	3.5	78.5	59.1	4.5	57.0
	August	72.4	2.5	74.9	62.9	3.3	54.3
PERSONS	1993— August	150.7	19.1	169.8	87.4	11.2	66.0
	1994— June	166.7	11.4	178.1	89.4	6.4	66.6
	July	169.4	8.9	178.3	89.5	5.0	66.6
	August	164.7	9.5	174.3	98.1	5.5	64.0
LOWER NORTHERN SYDNEY (SR)							
MALES	1993— August	72.4	5.6	78.0	28.0	7.2	73.6
	1994— June	70.7	* 2.4	73.1	29.5	* 3.3	71.3
	July	72.1	* 2.8	74.9	26.9	* 3.7	73.5
	August	70.2	* 3.9	74.1	22.5	* 5.2	76.7
FEMALES	1993— August	61.1	* 1.8	62.9	52.1	* 2.9	54.7
	1994— June	56.8	* 2.1	58.9	55.7	* 3.5	51.4
	July	60.2	* 3.0	63.2	51.4	* 4.8	55.1
	August	64.4	* 2.2	66.6	50.5	* 3.2	56.9
PERSONS	1993— August	133.5	7.4	141.0	80.1	5.3	63.8
	1994— June	127.5	* 4.5	132.0	85.2	* 3.4	60.8
	July	132.3	5.8	138.1	78.3	4.2	63.8
	August	134.7	6.0	140.7	72.9	4.3	65.9
HORNSBY—KU-RING-GAI (SR)							
MALES	1993— August	63.7	5.4	69.1	26.2	7.9	72.5
	1994— June	70.4	* 3.0	73.4	22.1	* 4.1	76.9
	July	79.1	* 1.8	80.9	22.1	* 2.3	78.5
	August	77.5	* 2.8	80.3	22.7	* 3.5	78.0
FEMALES	1993— August	54.0	* 3.3	57.3	51.0	* 5.8	52.9
	1994— June	55.2	* 1.9	57.1	50.0	* 3.3	53.3
	July	54.3	* 2.1	56.5	47.9	* 3.8	54.1
	August	52.4	* 2.8	55.2	45.5	* 5.1	54.8
PERSONS	1993— August	117.6	8.8	126.4	77.2	7.0	62.1
	1994— June	125.6	4.9	130.5	72.1	3.7	64.4
	July	133.4	4.0	137.3	70.0	2.9	66.2
	August	129.9	5.6	135.5	68.2	4.1	66.5

TABLE 18. LABOUR FORCE STATUS (a), REGIONS OF NSW—continued

	Month	Employed (^{'000})	Unemployed (^{'000})	Labour force (^{'000})	Not in labour force (^{'000})	Unemp- loyment rate (per cent)	Partici- pation rate (per cent)
NORTHERN BEACHES (SR) (b)							
MALES	1993— August	62.7	3.8	66.5	18.9	5.7	77.9
	1994— June	67.5	4.1	71.7	16.9	5.8	80.9
	July	69.7	3.4	73.1	17.9	4.7	80.4
	August	69.2	2.7	71.9	15.6	3.7	82.2
FEMALES	1993— August	54.8	3.0	57.9	37.0	5.2	61.0
	1994— June	53.3	2.2	55.5	35.9	4.0	60.7
	July	55.9	3.8	59.7	34.7	6.4	63.2
	August	54.1	2.2	56.3	35.5	3.9	61.3
PERSONS	1993— August	117.5	6.8	124.3	55.9	5.5	69.0
	1994— June	120.8	6.3	127.2	52.8	5.0	70.6
	July	125.6	7.3	132.8	52.6	5.5	71.6
	August	123.4	4.9	128.3	51.2	3.8	71.5
GOSFORD—WYONG (SR)							
MALES	1993— August	58.0	9.6	67.6	37.7	14.2	64.2
	1994— June	57.4	6.4	63.8	32.3	10.0	66.4
	July	55.9	7.6	63.5	33.2	11.9	65.7
	August	54.5	6.5	61.0	33.6	10.7	64.5
FEMALES	1993— August	45.6	5.7	51.3	56.7	11.2	47.5
	1994— June	37.6	6.4	44.0	52.6	14.6	45.5
	July	39.7	7.3	47.1	52.2	15.6	47.4
	August	39.0	7.4	46.4	51.7	15.9	47.3
PERSONS	1993— August	103.6	15.3	118.9	94.4	12.9	55.7
	1994— June	95.0	12.8	107.8	84.9	11.9	55.9
	July	95.6	14.9	110.6	85.4	13.5	56.4
	August	93.5	13.9	107.4	85.3	13.0	55.8
HUNTER (SR)							
MALES	1993— August	114.2	21.0	135.2	69.3	15.5	66.1
	1994— June	120.1	22.5	142.6	64.9	15.8	68.7
	July	122.5	18.5	141.0	64.7	13.1	68.5
	August	117.7	18.2	135.9	65.6	13.4	67.4
FEMALES	1993— August	83.9	9.4	93.3	118.9	10.1	44.0
	1994— June	88.3	16.2	104.5	116.4	15.5	47.3
	July	88.0	11.0	99.0	111.2	11.1	47.1
	August	82.0	12.2	94.2	116.3	13.0	44.7
PERSONS	1993— August	198.1	30.4	228.5	188.3	13.3	54.8
	1994— June	208.4	38.8	247.1	181.4	15.7	57.7
	July	210.5	29.5	240.0	176.0	12.3	57.7
	August	199.7	30.4	230.1	181.9	13.2	55.8

TABLE 18. LABOUR FORCE STATUS (a), REGIONS OF NSW—continued

	Month	Employed (<i>'000</i>)	Unemployed (<i>'000</i>)	Labour force (<i>'000</i>)	Not in labour force (<i>'000</i>)	Unemp- loyment rate (per cent)	Partici- pation rate (per cent)
NEWCASTLE (SRS)							
MALES	1993— August	94.3	19.2	113.5	62.0	16.9	64.7
	1994— June	100.9	19.9	120.8	58.0	16.5	67.6
	July	101.9	17.2	119.1	57.9	14.4	67.3
	August	98.8	17.0	115.8	59.2	14.7	66.2
	FEMALES	1993— August	71.3	8.3	79.5	105.7	10.4
	1994— June	76.7	14.6	91.2	101.8	16.0	47.3
	July	76.1	10.1	86.3	97.6	11.8	46.9
	August	72.5	10.4	82.8	102.1	12.5	44.8
PERSONS	1993— August	165.6	27.4	193.0	167.6	14.2	53.5
	1994— June	177.5	34.5	212.0	159.9	16.3	57.0
	July	178.0	27.3	205.4	155.5	13.3	56.9
	August	171.3	27.4	198.7	161.3	13.8	55.2
	ILLAWARRA AND SOUTH EASTERN (SRs)						
MALES	1993— August	134.3	17.5	151.8	67.1	11.5	69.3
	1994— June	131.2	16.4	147.6	69.6	11.1	68.0
	July	131.7	15.4	147.1	67.9	10.5	68.4
	August	134.4	14.0	148.5	68.3	9.4	68.5
	FEMALES	1993— August	97.2	10.2	107.4	110.8	9.5
	1994— June	92.1	14.0	106.1	114.9	13.2	48.0
	July	90.7	14.1	104.8	114.0	13.5	47.9
	August	90.4	13.8	104.2	118.8	13.2	46.7
PERSONS	1993— August	231.5	27.7	259.2	177.9	10.7	59.3
	1994— June	223.4	30.4	253.7	184.5	12.0	57.9
	July	222.3	29.6	251.9	181.9	11.7	58.1
	August	224.9	27.8	252.6	187.1	11.0	57.4
	ILLAWARRA (SR)						
MALES	1993— August	93.1	13.3	106.4	49.5	12.5	68.3
	1994— June	86.5	12.7	99.2	46.1	12.8	68.3
	July	87.1	11.1	98.2	45.7	11.3	68.2
	August	88.2	9.7	97.9	44.5	9.9	68.8
	FEMALES	1993— August	63.5	7.7	71.2	77.3	10.8
	1994— June	57.7	10.8	68.5	85.9	15.7	44.4
	July	56.6	9.8	66.4	85.7	14.7	43.7
	August	56.7	9.0	65.7	88.2	13.7	42.7
PERSONS	1993— August	156.6	21.0	177.6	126.8	11.8	58.3
	1994— June	144.3	23.5	167.7	132.0	14.0	56.0
	July	143.7	20.8	164.6	131.4	12.7	55.6
	August	144.9	18.7	163.6	132.7	11.4	55.2

TABLE 18. LABOUR FORCE STATUS (a), REGIONS OF NSW—continued

	Month	Employed (^{'000})	Unemployed (^{'000})	Labour force (^{'000})	Not in labour force (^{'000})	Unemp- loyment rate (per cent)	Partici- pation rate (per cent)
WOLLONGONG (SRS)							
MALES	1993— August	71.4	11.5	82.9	33.9	13.9	71.0
	1994— June	65.2	9.8	75.0	32.9	13.1	69.5
	July	65.8	9.5	75.3	31.8	12.7	70.3
	August	67.7	7.5	75.3	31.9	10.0	70.2
FEMALES	1993— August	45.2	6.8	52.0	53.5	13.0	49.3
	1994— June	42.2	9.0	51.2	61.6	17.6	45.4
	July	42.2	7.1	49.3	59.6	14.5	45.3
	August	40.9	5.5	46.4	63.2	11.9	42.3
PERSONS	1993— August	116.6	18.3	134.9	87.3	13.5	60.7
	1994— June	107.4	18.8	126.3	94.5	14.9	57.2
	July	107.9	16.7	124.6	91.4	13.4	57.7
	August	108.6	13.0	121.7	95.1	10.7	56.1
RICHMOND-TWEED AND MID-NORTH COAST (SRs)							
MALES	1993— August	82.5	21.5	104.0	55.6	20.7	65.2
	1994— June	81.3	19.2	100.5	55.8	19.1	64.3
	July	85.7	15.8	101.5	57.7	15.6	63.8
	August	88.2	15.1	103.3	59.0	14.7	63.6
FEMALES	1993— August	64.7	8.0	72.7	96.1	11.0	43.1
	1994— June	62.5	9.3	71.8	90.3	12.9	44.3
	July	62.0	10.6	72.6	95.0	14.6	43.3
	August	65.5	8.7	74.1	95.1	11.7	43.8
PERSONS	1993— August	147.2	29.5	176.7	151.7	16.7	53.8
	1994— June	143.8	28.5	172.3	146.1	16.6	54.1
	July	147.7	26.4	174.1	152.7	15.2	53.3
	August	153.6	23.8	177.4	154.1	13.4	53.5
NORTHERN, FAR WEST-NORTH WESTERN AND CENTRAL WEST (SRs) (c)							
MALES	1993— August	116.8	14.6	131.4	45.1	11.1	74.4
	1994— June	124.5	8.9	133.4	49.9	6.6	72.8
	July	121.9	10.8	132.6	50.1	8.1	72.6
	August	122.4	10.9	133.4	54.3	8.2	71.1
FEMALES	1993— August	78.2	9.6	87.8	90.2	10.9	49.3
	1994— June	74.5	5.1	79.6	98.2	6.4	44.8
	July	83.0	6.8	89.9	95.4	7.6	48.5
	August	77.5	7.7	85.3	95.7	9.1	47.1
PERSONS	1993— August	195.0	24.2	219.3	135.4	11.0	61.8
	1994— June	199.1	13.9	213.0	148.2	6.5	59.0
	July	204.9	17.6	222.5	145.6	7.9	60.5
	August	200.0	18.7	218.7	150.0	8.5	59.3

TABLE 18. LABOUR FORCE STATUS (a), REGIONS OF NSW—continued

Month	Employed ('000)	Unemployed ('000)	Labour force ('000)	Not in labour force ('000)	Unemp- loyment rate (per cent)	Partici- pation rate (per cent)
MURRAY-MURRUMBIDGEE (SR)						
MALES						
1993— August	64.3	6.0	70.3	22.2	8.5	76.0
1994—						
June	63.1	6.1	69.3	24.2	8.9	74.1
July	65.3	5.7	71.0	24.4	8.0	74.4
August	60.9	5.1	66.0	25.3	7.7	72.3
FEMALES						
1993— August	38.8	* 2.5	41.3	50.5	* 6.0	44.9
1994—						
June	45.0	* 3.2	48.2	46.9	* 6.6	50.7
July	46.6	* 1.1	47.7	49.7	* 2.3	48.9
August	43.1	* 2.6	45.8	51.4	* 5.7	47.1
PERSONS						
1993— August	103.1	8.4	111.5	72.8	7.6	60.5
1994—						
June	108.2	9.3	117.5	71.1	7.9	62.3
July	111.9	6.7	118.7	74.1	5.7	61.5
August	104.0	7.7	111.7	76.7	6.9	59.3

(a) While the Labour Force Survey is designed primarily to produce reliable estimates at the national and State/Territory level, it also delivers estimates for a number of regions within States. As with national and State estimates, regional labour force estimates are subject to sampling error. Since estimates for regions are components of corresponding estimates at the State level — and are thus based on a considerably smaller sample size — they are subject to higher relative standard error. Care should therefore be taken in interpretation of regional estimates, particularly month to month movements. Tables of standard errors are included in the Technical Note on pages 43–47 of this publication. (b) Previously Manly–Warringah (SR). (c) Excludes components of Far West (SD). These are published as part of Balance of NSW (MSR).

TABLE 19. EMPLOYED PERSONS: INDUSTRY (a) AND OCCUPATION
 SYDNEY (MSR) AND BALANCE OF NSW (MSR), AUGUST 1994
 ('000)

<i>Industry division and Major occupation group</i>	<i>Males</i>	<i>Females</i>	<i>Persons</i>
SYDNEY (MSR)			
Industry—			
Agriculture, forestry and fishing	6.5	*3.7	10.2
Mining	*3.0	*0.9	*3.9
Manufacturing	180.6	84.0	264.6
Electricity, gas and water supply	16.0	*4.3	20.3
Construction	104.0	11.4	115.3
Wholesale trade	93.4	46.1	139.5
Retail trade	120.5	111.8	232.3
Accommodation, cafes and restaurants	44.0	36.3	80.3
Transport and storage	70.3	25.2	95.4
Communication services	22.8	11.0	33.8
Finance and insurance	44.0	58.3	102.3
Property and business services	111.3	85.2	196.5
Government administration and defence	38.3	30.8	69.1
Education	42.5	76.2	118.6
Health and community services	40.3	117.1	157.4
Cultural and recreational services	23.0	20.7	43.7
Personal and other services	32.2	30.8	63.0
Occupation—			
Managers and administrators	128.6	44.1	172.8
Professionals	167.4	124.3	291.7
Para-professionals	51.2	48.7	99.9
Tradespersons	208.0	22.0	229.9
Clerks	78.8	251.8	330.6
Salespersons and personal service workers	102.8	166.6	269.4
Plant and machine operators, and drivers	90.5	12.7	103.2
Labourers and related workers	165.2	83.8	249.0
Total employed	992.4	753.9	1,746.3
BALANCE OF NSW (MSR)			
Industry—			
Agriculture, forestry and fishing	74.2	32.1	106.3
Mining	18.5	*0.7	19.2
Manufacturing	90.4	27.4	117.8
Electricity, gas and water supply	15.6	*1.5	17.1
Construction	55.5	8.1	63.6
Wholesale trade	31.7	9.2	40.9
Retail trade	68.1	70.7	138.8
Accommodation, cafes and restaurants	21.4	30.3	51.7
Transport and storage	30.9	*4.4	35.4
Communication services	7.6	*3.0	10.6
Finance and insurance	6.7	15.1	21.7
Property and business services	25.0	26.5	51.5
Government administration and defence	24.0	10.0	34.1
Education	21.0	42.4	63.4
Health and community services	17.2	59.7	76.9
Cultural and recreational services	7.9	7.1	15.0
Personal and other services	11.8	12.5	24.2
Occupation—			
Managers and administrators	98.0	37.0	135.0
Professionals	51.0	42.9	94.0
Para-professionals	22.4	25.0	47.4
Tradespersons	116.7	16.5	133.2
Clerks	25.0	93.9	118.9
Salespersons and personal service workers	45.5	93.4	138.9
Plant and machine operators, and drivers	61.6	7.0	68.5
Labourers and related workers	107.2	44.9	152.1
Total employed	527.4	360.7	888.0

(a) Industry data are now classified according to the Australian and New Zealand Standard Industrial Classification. See the Explanatory Notes for more details.

TABLE 20. LABOUR FORCE STATUS: ORIGINAL SERIES, ACT

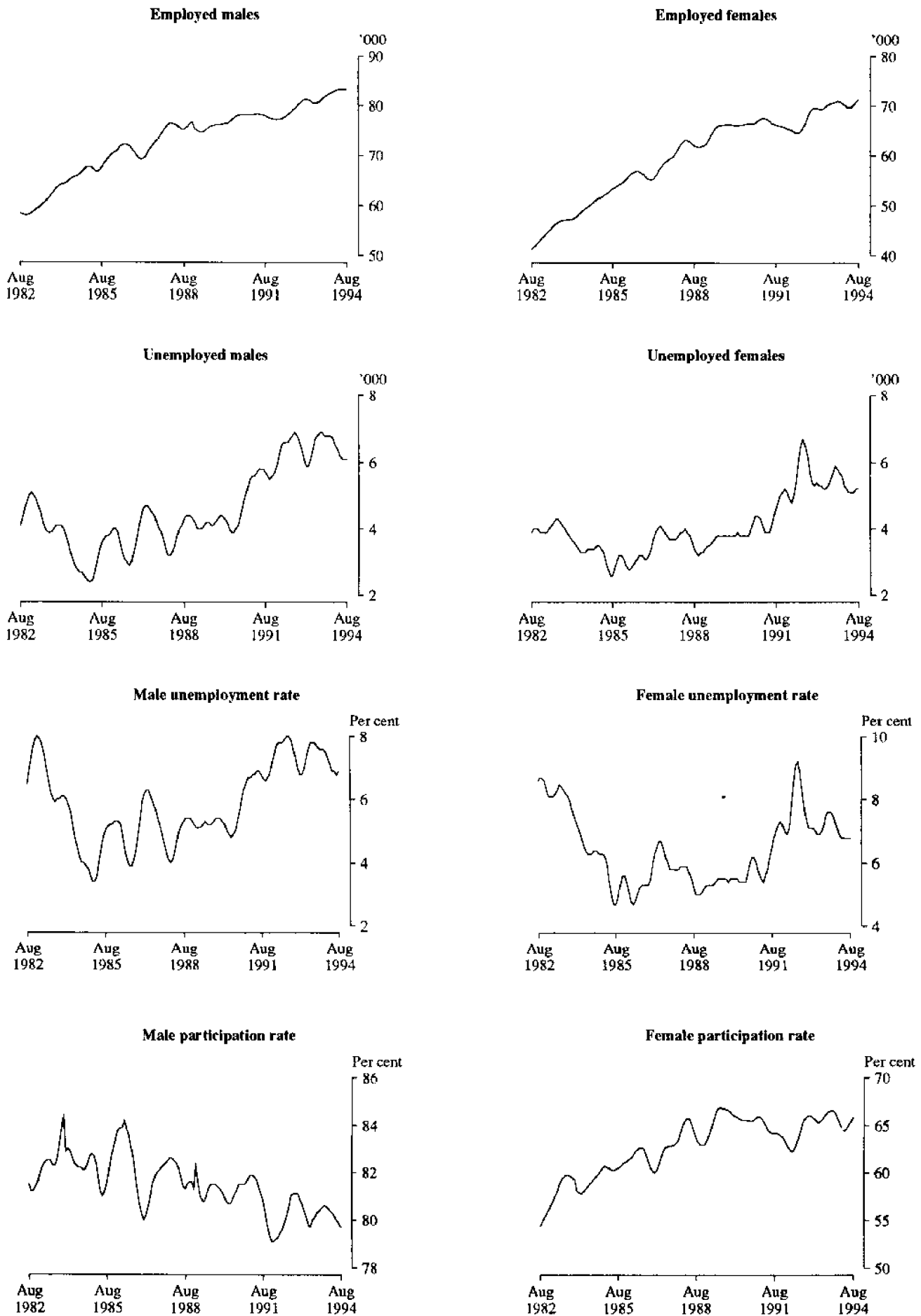
Month	Employed			Unemployed			Labour force ('000)	Not in labour force ('000)	Civilian population aged 15 and over ('000)	Unemployment rate (per cent)	Participation rate (per cent)
	Full-time workers ('000)	Part-time workers ('000)	Total ('000)	Looking for full-time work ('000)	Looking for part-time work ('000)	Total ('000)					
MALES											
August—											
1990	70.7	6.6	77.3	2.7	* 0.8	3.5	80.8	20.3	101.1	4.4	79.9
1991	68.6	9.5	78.2	3.4	1.6	5.0	83.2	20.6	103.8	6.0	80.1
1992	70.0	8.4	78.4	4.3	* 1.2	5.5	83.8	22.6	106.5	6.5	78.7
1993—											
June	70.3	9.2	79.6	5.8	* 0.9	6.7	86.3	23.1	109.4	7.8	78.9
July	70.7	9.9	80.6	5.1	1.2	6.3	86.9	22.4	109.3	7.3	79.5
August	70.0	10.7	80.7	5.6	1.2	6.8	87.5	22.0	109.6	7.8	79.9
1994—											
May	73.1	10.5	83.6	4.4	1.6	6.0	89.6	22.0	111.6	6.7	80.3
June	72.9	10.4	83.4	5.0	1.0	6.0	89.4	22.4	111.8	6.7	80.0
July	73.1	10.3	83.4	4.6	1.2	5.7	89.1	22.8	111.9	6.4	79.7
August	71.3	11.4	82.7	4.9	* 0.8	5.8	88.5	23.6	112.0	6.5	79.0
MARRIED FEMALES											
August—											
1990	25.7	12.5	38.2	* 0.6	* 0.6	* 1.2	39.4	22.4	61.8	* 3.0	63.7
1991	25.7	14.5	40.3	* 0.6	* 1.0	1.5	41.8	21.5	63.3	3.7	66.0
1992	24.9	15.8	40.7	* 1.2	1.4	2.6	43.3	20.7	63.9	6.0	67.7
1993—											
June	27.6	13.9	41.6	1.3	* 0.6	1.9	43.5	20.0	63.5	4.4	68.5
July	26.0	15.2	41.2	1.3	* 0.3	1.6	42.8	21.8	64.6	3.8	66.2
August	26.1	15.0	41.1	1.3	* 0.3	1.6	42.7	22.3	65.0	3.7	65.6
1994—											
May	25.8	15.7	41.4	* 0.8	1.0	1.8	43.3	21.0	64.2	4.2	67.4
June	26.7	14.8	41.5	1.0	* 0.8	1.8	43.3	21.3	64.5	4.2	67.0
July	26.6	16.1	42.7	* 0.9	* 0.6	1.5	44.2	20.9	65.2	3.5	67.8
August	27.1	16.2	43.2	* 0.8	* 0.8	1.6	44.8	20.5	65.3	3.6	68.7
ALL FEMALES											
August—											
1990	44.6	20.9	65.4	2.2	* 1.3	3.5	68.9	38.5	107.5	5.1	64.2
1991	44.1	21.7	65.8	2.1	2.0	4.1	69.9	40.6	110.5	5.8	63.2
1992	39.2	26.2	65.4	3.2	3.6	6.8	72.2	40.4	112.6	9.5	64.1
1993—											
June	45.1	25.2	70.2	3.0	1.8	4.9	75.1	39.5	114.7	6.5	65.5
July	43.5	26.1	69.6	3.5	1.6	5.1	74.8	39.9	114.6	6.9	65.2
August	43.7	26.7	70.4	3.1	1.3	4.4	74.8	40.0	114.8	5.9	65.2
1994—											
May	45.7	25.0	70.7	2.3	2.6	5.0	75.6	40.5	116.1	6.5	65.1
June	46.7	23.4	70.1	2.8	1.6	4.4	74.5	41.7	116.2	5.9	64.1
July	47.2	24.0	71.2	2.8	1.9	4.7	75.9	40.4	116.3	6.2	65.3
August	45.9	25.5	71.4	2.7	2.1	4.8	76.2	40.1	116.4	6.3	65.5
PERSONS											
August—											
1990	115.3	27.4	142.7	5.0	2.1	7.0	149.8	58.8	208.6	4.7	71.8
1991	112.7	31.3	143.9	5.5	3.6	9.1	153.0	61.2	214.2	5.9	71.4
1992	109.2	34.6	143.8	7.5	4.8	12.3	156.0	63.1	219.1	7.9	71.2
1993—											
June	115.4	34.4	149.8	8.9	2.8	11.6	161.4	62.6	224.1	7.2	72.0
July	114.2	36.0	150.2	8.7	2.8	11.5	161.7	62.3	223.9	7.1	72.2
August	113.7	37.4	151.1	8.8	2.5	11.3	162.3	62.0	224.4	6.9	72.3
1994—											
May	118.9	35.4	154.3	6.7	4.2	10.9	165.2	62.5	227.8	6.6	72.5
June	119.7	33.8	153.5	7.8	2.6	10.4	163.8	64.1	227.9	6.3	71.9
July	120.3	34.3	154.6	7.4	3.1	10.5	165.0	63.1	228.2	6.3	72.3
August	117.3	36.9	154.1	7.6	3.0	10.6	164.7	63.7	228.4	6.4	72.1

TABLE 21. LABOUR FORCE STATUS: TREND SERIES, ACT(a)

Month	Employed (^{'000})	Unemployed (^{'000})	Labour force (^{'000})	Unemployment rate (per cent)	Participation rate (per cent)
MALES					
<i>August—</i>					
1990	78.1	4.1	82.2	5.0	81.3
1991	78.1	5.7	83.8	6.8	80.8
1992	79.0	6.8	85.9	8.0	80.6
<i>1993—</i>					
June	80.5	6.7	87.2	7.6	79.7
July	80.6	6.8	87.4	7.8	80.0
August	80.9	6.9	87.7	7.8	80.1
September	81.2	6.9	88.1	7.8	80.3
October	81.7	6.8	88.5	7.7	80.4
November	82.0	6.8	88.8	7.6	80.5
December	82.3	6.8	89.0	7.6	80.6
<i>1994—</i>					
January	82.5	6.8	89.3	7.6	80.6
February	82.8	6.7	89.5	7.5	80.5
March	83.0	6.5	89.6	7.3	80.4
April	83.2	6.4	89.6	7.1	80.3
May	83.3	6.2	89.5	6.9	80.2
June	83.3	6.1	89.4	6.9	80.0
July	83.3	6.1	89.4	6.8	79.9
August	83.2	6.1	89.3	6.9	79.7
FEMALES					
<i>August—</i>					
1990	66.5	3.8	70.4	5.4	65.5
1991	66.2	4.6	70.9	6.5	64.2
1992	65.8	6.7	72.5	9.2	64.3
<i>1993—</i>					
June	70.0	5.2	75.2	6.9	65.6
July	70.3	5.3	75.6	7.0	66.0
August	70.6	5.5	76.1	7.2	66.3
September	70.7	5.7	76.5	7.5	66.5
October	70.9	5.9	76.7	7.6	66.6
November	71.0	5.8	76.8	7.6	66.6
December	70.9	5.7	76.6	7.5	66.3
<i>1994—</i>					
January	70.6	5.6	76.2	7.3	65.8
February	70.2	5.3	75.6	7.1	65.2
March	69.9	5.2	75.1	6.9	64.6
April	69.8	5.1	74.9	6.8	64.5
May	69.9	5.1	75.0	6.8	64.6
June	70.4	5.1	75.5	6.8	65.0
July	70.9	5.2	76.0	6.8	65.4
August	71.5	5.2	76.7	6.8	65.9
PERSONS					
<i>August—</i>					
1990	144.7	7.9	152.6	5.2	73.2
1991	144.4	10.4	154.7	6.7	72.2
1992	144.8	13.5	158.3	8.5	72.3
<i>1993—</i>					
June	150.5	11.9	162.3	7.3	72.5
July	150.9	12.2	163.1	7.5	72.8
August	151.4	12.4	163.8	7.6	73.0
September	152.0	12.6	164.6	7.7	73.2
October	152.5	12.7	165.2	7.7	73.4
November	153.0	12.6	165.6	7.6	73.4
December	153.2	12.5	165.7	7.5	73.3
<i>1994—</i>					
January	153.1	12.3	165.4	7.4	73.0
February	153.0	12.0	165.0	7.3	72.7
March	152.9	11.7	164.6	7.1	72.4
April	152.9	11.5	164.4	7.0	72.2
May	153.2	11.3	164.5	6.9	72.2
June	153.7	11.3	164.9	6.8	72.4
July	154.1	11.3	165.4	6.8	72.5
August	154.7	11.4	166.1	6.9	72.7

(a) See Explanatory Note 28.

TREND SERIES, ACT (a)



(a) Comparisons between these graphs should not be made, as their vertical axes are not similarly scaled.

TABLE 22. LABOUR FORCE STATUS: AGE, ACT, AUGUST 1994

	Persons						Total
	Females			Age group (years)			
	Males	Married	Total	15-19	20-24	25 and over	
	— '000 —						
<i>Employed</i>	82.7	43.2	71.4	10.5	23.5	120.1	154.1
Full-time workers	71.3	27.1	45.9	3.4	15.3	98.6	117.3
Part-time workers	11.4	16.2	25.5	7.1	8.2	21.5	36.9
<i>Unemployed</i>	5.8	1.6	4.8	2.4	2.1	6.1	10.6
Looking for full-time work	4.9	* 0.8	2.7	1.3	1.4	5.0	7.6
Looking for part-time work	* 0.8	* 0.8	2.1	1.2	* 0.7	1.1	3.0
<i>Labour force</i>	88.5	44.8	76.2	12.9	25.5	126.2	164.7
Not in labour force	23.6	20.5	40.1	11.3	5.0	47.4	63.7
Aged 15-19 attending school	5.1	* 0.0	4.7	9.8	9.8
<i>Civilian population</i>	112.0	65.3	116.4	24.2	30.5	173.6	228.4
	— per cent —						
Unemployment rate	6.5	3.6	6.3	18.7	8.0	4.8	6.4
Looking for full-time work	6.5	* 2.9	5.5	27.3	8.2	4.8	6.1
Participation rate	79.0	68.7	65.5	53.4	83.5	72.7	72.1
Employment/population ratio	73.8	66.2	61.4	43.4	76.8	69.2	67.5
	— number —						
Average weekly hours worked by employed persons	38.0	29.5	29.9	20.3	31.4	36.1	34.3
Average duration of unemployment (weeks)	63.4	27.3	34.0	42.2	28.7	60.3	50.1

TABLE 23. NON-INSTITUTIONALISED PERSONS(a): LABOUR FORCE STATUS, BIRTHPLACE AND YEAR OF ARRIVAL, ACT, AUGUST 1994 ('000)

	Employed	Unemployed	Not in labour force	Labour force	Civilian population aged 15 and over
<i>Born in Australia</i>	115.7	6.9	40.2	122.6	162.8
<i>Born outside Australia</i>	38.4	3.6	21.1	42.1	63.2
Arrived before 1966	11.4	* 0.9	8.6	12.3	20.9
Arrived 1966-1970	6.5	* 0.3	2.1	6.8	8.9
Arrived 1971-1975	7.9	* 0.4	1.9	8.3	10.2
Arrived 1976-1980	3.2	* 0.2	1.9	3.4	5.3
Arrived 1981-1985	4.0	* 0.3	2.5	4.3	6.8
Arrived 1986-1990	3.6	* 0.4	2.0	4.0	6.1
Arrived 1991 to survey date	1.9	1.2	2.0	3.0	5.0
<i>Main English speaking countries</i>	18.2	1.3	6.7	19.5	26.2
Arrived before 1966	5.7	* 0.4	3.1	6.0	9.2
Arrived 1966-1970	3.5	* 0.3	* 0.9	3.7	4.6
Arrived 1971-1975	4.0	* 0.2	* 0.4	4.1	4.5
Arrived 1976-1980	1.3	* 0.2	* 0.7	1.4	2.1
Arrived 1981-1985	1.5	* 0.0	* 0.7	1.5	2.2
Arrived 1986-1990	1.2	* 0.0	* 0.3	1.2	1.6
Arrived 1991 to survey date	1.1	* 0.4	* 0.5	1.5	2.0
<i>Other than Main English speaking countries</i>	20.3	2.4	14.4	22.6	37.0
Arrived before 1966	5.8	* 0.5	5.5	6.2	11.7
Arrived 1966-1970	3.1	* 0.0	1.2	3.1	4.3
Arrived 1971-1975	3.9	* 0.3	1.5	4.2	5.7
Arrived 1976-1980	1.9	* 0.1	1.2	2.0	3.2
Arrived 1981-1985	2.5	* 0.3	1.8	2.8	4.6
Arrived 1986-1990	2.4	* 0.4	1.7	2.8	4.5
Arrived 1991 to survey date	* 0.7	* 0.8	1.5	1.5	3.0
Total	154.1	10.6	61.3	164.7	226.0

(a) Excludes boarding school pupils.

TABLE 24. EMPLOYED PERSONS: INDUSTRY (a) AND OCCUPATION, ACT, AUGUST 1994
('000)

<i>Industry division and Major occupation group</i>	<i>Males</i>	<i>Females</i>	<i>Persons</i>
Industry—			
Agriculture, forestry, fishing	*0.6	*0.6	*1.2
Mining	*0.1	*0.0	*0.1
Manufacturing	3.5	1.6	5.2
Electricity, gas and water supply	*1.2	*0.2	1.4
Construction	8.6	1.5	10.1
Wholesale trade	3.6	*1.2	4.8
Retail trade	11.4	8.2	19.6
Accommodation, cafes and restaurants	4.1	3.9	8.0
Transport and storage	3.7	*1.0	4.7
Communication services	1.8	*1.0	2.8
Finance and insurance	1.3	2.4	3.7
Property and business services	8.4	7.0	15.4
Government administration and defence	20.8	17.7	38.5
Education	5.4	7.8	13.2
Health and community services	2.7	9.9	12.6
Cultural and recreational services	2.8	3.2	6.1
Personal and other services	2.8	4.1	6.8
Occupation—			
Managers and administrators	13.6	5.7	19.3
Professionals	16.6	10.9	27.5
Para-professionals	5.2	5.3	10.5
Tradespersons	14.0	2.3	16.3
Clerks	11.3	28.0	39.3
Salespersons and personal service workers	9.1	15.1	24.1
Plant and machinery operators, and drivers	4.2	*0.5	4.7
Labourers and related workers	8.7	3.6	12.4
Total employed	82.7	*71.4	154.1

(a) Industry data are now classified according to the Australian and New Zealand Standard Industrial Classification. See the Explanatory Notes for more details.

EMPLOYMENT BY INDUSTRY DIVISION, ACT, AUGUST 1994

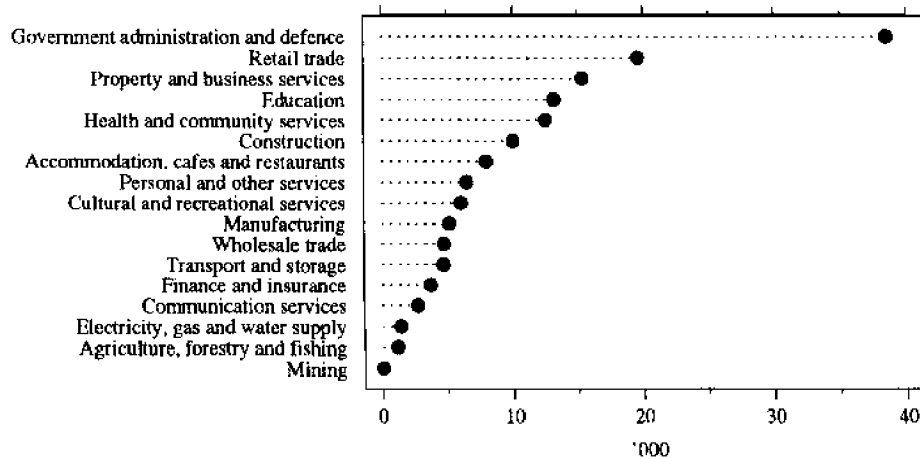
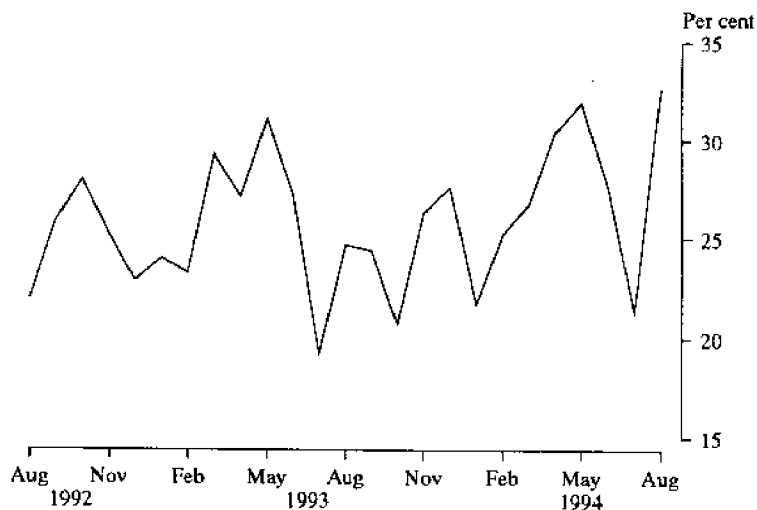


TABLE 25. LONG-TERM UNEMPLOYMENT, ACT

Month	Long-term unemployment									Long-term unemployment as a proportion of total unemployment		
	52 weeks and under 104			104 weeks and over			Total			Males (per cent)	Females (per cent)	Persons (per cent)
	Males ('000)	Females ('000)	Persons ('000)	Males ('000)	Females ('000)	Persons ('000)	Males ('000)	Females ('000)	Persons ('000)			
<i>1993—</i>												
June	* 1.2	* 0.5	* 1.8	* 0.9	* 0.5	1.3	2.1	1.1	3.2	30.8	22.4	27.3
July	* 0.6	* 0.5	* 1.0	* 0.7	* 0.5	1.2	1.3	* 0.9	2.2	20.9	17.0	19.2
August	* 0.7	* 0.7	* 1.2	* 0.9	* 0.7	1.6	1.6	1.2	2.8	23.0	27.1	24.7
September	* 0.7	* 0.7	* 1.4	* 0.9	* 0.7	1.7	1.6	1.4	3.0	25.1	23.7	24.4
October	* 0.7	* 0.3	* 1.2	* 0.8	* 0.3	1.1	1.5	* 0.8	2.3	23.8	16.8	20.7
November	* 0.6	* 0.5	* 1.1	1.2	* 0.5	1.7	1.8	1.0	2.8	33.8	18.7	26.3
December	* 0.6	* 0.6	* 1.2	1.5	* 0.6	2.1	2.1	1.2	3.3	31.7	22.5	27.6
<i>1994—</i>												
January	* 0.5	* 0.5	* 1.2	1.6	* 0.5	2.1	2.1	1.1	3.2	25.0	17.4	21.7
February	* 0.7	1.1	* 1.8	1.2	1.1	2.3	2.0	2.1	4.1	22.8	27.8	25.2
March	* 0.9	* 0.6	* 1.7	* 0.8	* 0.6	1.4	1.7	1.4	3.1	26.5	26.9	26.7
April	* 0.9	* 0.8	* 1.7	1.3	* 0.6	1.9	2.2	1.4	3.6	33.9	26.2	30.4
May	* 1.0	* 0.6	* 1.5	1.5	* 0.5	2.0	2.4	1.0	3.5	41.1	20.9	31.9
June	* 0.8	* 0.6	* 1.5	1.3	* 0.2	1.4	2.1	* 0.8	2.9	34.3	18.5	27.7
July	* 0.5	* 0.4	* 0.9	1.0	* 0.4	1.4	1.5	* 0.7	2.2	26.3	15.4	21.3
August	* 0.9	* 0.5	* 1.4	1.5	* 0.6	2.1	2.4	1.1	3.4	41.1	22.3	32.6

LONG TERM UNEMPLOYED AS A PROPORTION OF TOTAL UNEMPLOYED, ACT



LABOUR FORCE SURVEY: INTRODUCTION OF ANZSIC FOR INDUSTRY DATA

Introduction

This article provides information about a change in the industrial classification used in the Labour Force Survey (LFS). From August 1994, the Australian and New Zealand Standard Industrial Classification (ANZSIC) will replace the Australian Standard Industrial Classification (ASIC). A detailed description of the Classification and its structure is given in *Australian and New Zealand Standard Industrial Classification 1993 (1292.0)*, published in 1993.

Industry classifications and the Labour Force Survey

The ANZSIC, like the ASIC, is a classification which serves to identify groupings of businesses which carry out similar economic activities and which satisfy other conditions (like economic significance). These groups can be used to define an industry. An individual business can then be assigned to an industry on the basis of its predominant economic activity.

The industry classification can then be used in collections such as the LFS, where employed and unemployed persons are classified to either the industry of the business in which they are employed, or to the industry of the business in which they were previously employed (in the case of unemployed persons who had worked full time for at least two weeks in the last two years).

Development of ANZSIC

The ANZSIC was developed by the Australian Bureau of Statistics and Statistics New Zealand for use in the production and analysis of industry statistics in both countries.

The development of the ANZSIC resulted from the need to improve the comparability of industry statistics between Australia and New Zealand. While the development of the ANZSIC reflects changes in the world economy during the last twenty years, it also acknowledges particular circumstances in Australia and New Zealand, such as:

- a shift away from goods-producing industries to service industries;
- the desire for closer alignment with the International Standard Industrial Classification of All Economic Activities (ISIC), Revision 3;
- rapid technological development;
- user requirements for separate industry categories.

Structure of the ANZSIC

The ANZSIC, like the ASIC, has a structure consisting of categories at four levels: Divisions (the broadest level), Subdivisions, Groups and Classes. At the Division level the main purpose is to provide a limited number of categories which will provide a broad overall picture of the

economy. There are 17 divisions in the ANZSIC, each identified by an alphabetical character, as follows:

Division	Title
A	Agriculture, Forestry and Fishing
B	Mining
C	Manufacturing
D	Electricity, Gas and Water Supply
E	Construction
F	Wholesale Trade
G	Retail Trade
H	Accommodation, Cafes and Restaurants
I	Transport and Storage
J	Communication Services
K	Finance and Insurance
L	Property and Business Services
M	Government Administration and Defence
N	Education
O	Health and Community Services
P	Cultural and Recreational Services
Q	Personal and Other Services

The Subdivision, Group and Class levels provide increasingly detailed dissections of the broad categories. LFS responses were only coded at the Group (3-digit) level under the ASIC. A similar practice will continue under the ANZSIC, with responses coded at the Group level.

ASIC/ANZSIC concordance

To assist users in making comparisons with previously published data, a concordance between the ASIC Group level and the corresponding ANZSIC Group(s) is available on request. For Australia, the concordance shows the estimated proportion of employment attributable to each ANZSIC Group(s), as compared with ASIC Group data using information at the establishment unit level taken from the ABS Business Register as at May 1994.

Historical estimates of employment by ANZSIC industry group have been compiled after converting unit records using the proportions shown in this concordance to ANZSIC equivalent Groups. See Data availability below for more information about the availability of ANZSIC data from the Labour Force Survey.

Data availability

From the August 1994 LFS, the ANZSIC will be used to classify employed and unemployed persons by industry. Industry data will be available at the Division, Subdivision and Group level (the most detailed level at which industry will be coded for the LFS).

Historical data

Historical data at the ANZSIC Division level, produced using the above concordance, will be available for August 1986 to August 1994 for Australia. Historical data from February 1978 will be available at a later date. The ABS will also be able to make available more detailed information in the form of customised reports. In general, a charge is applied for providing unpublished information.

EXPLANATORY NOTES

Introduction

This publication contains estimates of the civilian labour force derived from the labour force survey component of the monthly population survey, which is conducted on a sample basis throughout Australia.

The population survey

2. This survey consists of the labour force survey (LFS) and, in most months, one or more supplementary topics. The survey is based on a multi-stage area sample of private dwellings (houses, flats, etc.) and non-private dwellings (hotels, motels, etc.) and covers slightly less than one-half of one per cent of the population of New South Wales. The information is obtained from the occupants of selected dwellings by carefully chosen and specially trained interviewers. The interviews are generally conducted during the two weeks beginning on the Monday between the 6th and 12th of each month. The information obtained relates to the week before the interview (i.e. the reference week).

Scope

3. The labour force survey includes all persons aged 15 years and over, except:

- (a) members of the permanent defence forces;
- (b) certain diplomatic personnel of overseas governments, customarily excluded from census and estimated populations;
- (c) overseas residents in Australia; and
- (d) members of non-Australian defence forces (and their dependants) stationed in Australia.

Survey sample redesign

4. Following each Population Census, the ABS redesigns and reselects the LFS to take into account the new information which is obtained from the Census. The sample used in the LFS from September 1987 to August 1992, which was designed and selected using data from the 1986 Census, has been updated and reselected using information collected in the 1991 Census. The new sample was phased in over the period September 1992 to December 1992.

5. For the most part, one quarter of the new sample was introduced each month so that, by December 1992, the entire new sample was in place.

Potential effects on labour force survey estimates

6. Implications for estimates produced from the LFS due to sample redesign and its implementation are as follows.

- (a) The sampling error overall increased initially by about seven per cent over the previous level but will decline gradually during the life of the new sample. For State estimates, the initial increase

was about 8 per cent, while for the Territories, there was a decrease of 19 per cent. There were also higher standard errors for movements produced over the period September 1992 to December 1992 compared with those for the corresponding series produced prior to this period and from January 1993 onwards. Overall, these were estimated to be up to 20 per cent higher than the normal standard errors on monthly movements.

- (b) Analysis has shown that the unemployment rate is marginally higher (less than 0.5 percentage points on average) for those persons in sample for the first time. Normally, this will not affect the overall estimates of month-to-month movements because the number of persons in the sample does not change significantly. However, during the transition period, there were twice as many people as usual in the sample for the first time. This may have caused a small upward movement (of less than 0.1 percentage points on average) in the unemployment rate from August 1992 to September 1992 and a compensating decrease from December 1992 to January 1993.

7. For further information, see *Information Paper: Labour Force Survey Sample Design* (6269.0).

Definitions

8. The labour force category to which a person is assigned depends on the actual activity undertaken during the reference week (i.e. whether working, looking for work, etc.). The following definitions, which conform closely to the international standard definitions specified by the International Labour Office (ILO), relate only to those persons within the scope of the survey.

9. *Employed persons* comprise all civilians aged 15 years and over who, during the reference week:

- (a) worked for one hour or more for pay, profit, commission or payment in kind (including employees, employers and self-employed persons) in a job or business, or on a farm; or
- (b) worked for one hour or more without pay in a family business or on a farm (i.e. unpaid family helpers); or
- (c) were employees who had a job but were not at work and were: on paid leave; on leave without pay for less than four weeks up to the end of the reference week; stood down without pay because of bad weather or plant breakdown at their place of employment for less than four weeks up to the end of the reference week; on strike or locked out; on workers' compensation and expected to be returning to their job; or receiving wages or salary while undertaking full-time study; or

- (d) were employers, self-employed persons or unpaid family helpers who had a job, business or farm, but were not at work.
10. Prior to April 1986, unpaid family helpers who worked for 1 to 14 hours were excluded from the category of employed persons.
11. Employed persons can be classified into:
- full-time workers* (i.e. those who usually worked 35 hours or more a week (in all jobs) and others who, although usually part-time workers, worked 35 hours or more during the reference week); and
 - part-time workers* (i.e. those who usually worked less than 35 hours a week and who did so during the reference week).
12. *Unemployed persons* are all those aged 15 years and over who were not employed during the reference week, and:
- had actively looked for full-time or part-time work at any time in the four weeks up to the end of the reference week, and:
 - were available for work in the reference week, or would have been available except for temporary illness (i.e. lasting for less than four weeks to the end of the reference week); or
 - were waiting to start a new job within four weeks from the end of the reference week and would have started in the reference week if the job had been available then; or
 - were waiting to be called back to a full-time or part-time job from which they had been stood down without pay for less than four weeks up to the end of the reference week (including the whole of the reference week) for reasons other than bad weather or plant breakdown.
13. *Actively looking for work* includes writing, telephoning or applying in person to an employer for work; answering a newspaper advertisement for a job; checking factory or Commonwealth Employment Service notice-boards; being registered with the Commonwealth Employment Service; checking or registering with any other employment agency; advertising or tendering for work; and contacting friends or relatives.
14. *The unemployment rate* for any group is the number unemployed expressed as a percentage of the labour force (i.e. employed plus unemployed) in the same group.
15. *The labour force* comprises all persons who, during the reference week, were employed or unemployed as defined above.
16. *Long term unemployed* comprises persons unemployed for a period of 52 weeks or more.
17. *Persons not in the labour force* are those who, during the reference week, were not in the categories *employed* or *unemployed* as defined above.
18. *The labour force participation rate* for any group is the labour force expressed as a percentage of the civilian population aged 15 years and over in the same group.
19. *Duration of unemployment* is the period from the time the person began looking for work or was stood down to the end of the reference week.
20. *Unemployed persons classified by industry and occupation.* Unemployed persons who had worked full-time for two weeks or more in the last two years are classified according to the industry and occupation of their most recent full-time job.
21. *Industry classification.* From August 1994, Labour Force Survey industry data are classified according to the Australian and New Zealand Standard Industrial Classification (ANZSIC), a detailed description of which appears in ANZSIC 1993 (1292.0). For further information about the application of ANZSIC to Labour Force Survey data, see *Information Paper Labour Force Survey: Introduction of ANZSIC for industry data* (6259.0).
22. *Occupation classification.* Occupation data are presented in accordance with the *Australian Standard Classification of Occupations (ASCO)* (1221.0 and 1222.0).
23. *Marital status.* In the labour force survey, persons are classified as *married* or *not married*. Persons are classified as *married* if they are reported as being married (including de facto) and their spouse was a usual resident of the household at the time of the survey.
24. *Persons attending school or a tertiary educational institution.* Persons attending school comprise those aged 15–19 years who, during the reference week, were enrolled full-time at secondary or high schools (including boarding school pupils). Persons attending a tertiary educational institution comprise those aged 15–24 years who were enrolled full-time at universities, colleges of advanced education, technical colleges, colleges of technical and further education, and theological colleges.
25. *Employment/population ratio.* For any group, the number of employed persons expressed as a percentage of the civilian population aged 15 years and over in the same group.

Statistical areas

26. The regional structure for NSW used in tables 16 to 21 is based on the Statistical Region structure of the Australian Standard Geographical Classification (ASGC). For further information concerning statistical areas, please refer to pages 48–50 and the publications *Regional Statistics, New South Wales* (1304.1) and *Australian Standard Geographical Classification* (1216.0).

Seasonal adjustment and trend estimation

27. Seasonal adjustment is a means of removing the estimated effects of normal seasonal variation from the series so that the effects of other influences on the series can be more clearly recognised. Seasonal adjustment does not aim to remove the irregular or non-seasonal influences which may be present in any particular month. This means that month-to-month movements of the seasonally adjusted estimates may not be reliable indicators of trend behaviour. For example, irregular factors unrelated to the trend account for more than half the seasonally adjusted movement with the following frequency:

- (a) Employment: 5 in 10 monthly movements
- (b) Unemployment: 7 in 10 monthly movements
- (c) Unemployment rate: 7 in 10 monthly movements
- (d) Participation rate: 9 in 10 monthly movements

28. Smoothing seasonally adjusted series produces a measure of the underlying trend by reducing the impact of the irregular component of the series. The trend estimates are derived by applying a 13-term Henderson-weighted moving average to the respective seasonally adjusted series. While this smoothing technique enables estimates to be produced which include the latest month, it does result in revisions to the most recent months as additional observations become available.

29. Seasonally adjusted series for NSW appear in this publication in Table 2. Trend estimates for NSW and ACT appear in Tables 2 and 21 respectively. Seasonally adjusted data is not available for ACT.

Reliability of the estimates

30. Estimates in this publication are subject to sampling and non-sampling errors. The Technical Note on pages 43–47 of this publication gives information on these sources of error.

Related publications

31. Users may also wish to refer to the following related publications which are available from the ABS Bookshop:

Regional Statistics, New South Wales (1304.1) issued annually

Australian Capital Territory Business Indicators (1303.8) issued monthly

Australian Capital Territory Statistical Summary (1307.8) issued annually

Australian Capital Territory at a Glance (1314.8) issued annually

A Guide to Smoothing Time Series — Estimates of 'Trend' (1316.0)

Time Series Decomposition — An Overview (1317.0)

Labour Statistics, Australia (6101.0) issued annually

A Guide to Labour Statistics (6102.0)

The Labour Force, Australia, Preliminary (6202.0) issued monthly

The Labour Force, Australia (6203.0) issued monthly

Employed Wage and Salary Earners, Australia (6248.0) issued quarterly

Information Paper: Labour Force Survey: Introduction of ANZSIC for industry data (6259.0)

Information Paper: Labour Force Survey — Sample Design (6269.0)

Information Paper: Labour Force Survey — Measuring Teenage Unemployment (6270.0)

Technical Paper: The Labour Force, Australia: Preliminary Data on Floppy Disk — Technical Details (6271.0)

Additional data

32. In addition to the labour force survey, the ABS publishes a wide range of supplementary labour market information. For details see page 51 of this publication.

33. The ABS can also make available information which is not published. This information may be made available in one or more of the following forms: microfiche, photocopy, data tape, floppy disk, computer printout, clerically-extracted tabulation. In general, a charge is made for providing unpublished information.

Symbols and other usages

A	Area
C	City
MSR	Major Statistical Region
n.c.c.	not elsewhere classified
SD	Statistical Division
SR	Statistical Region
SRS	Statistical Region Sector
*	subject to sampling variability too high for most practical purposes. See paragraph 6 of the Technical Note on Data Reliability.
—	nil or rounded to zero (including null cells)

34. Figures have been rounded and discrepancies may occur between sums of the component items and the totals shown.

TECHNICAL NOTE ON DATA RELIABILITY

Sources of error

There are a number of possible sources of error in sample surveys and these can be classified into two types: *sampling error*; and *non-sampling error*.

Non-sampling errors

2. Non-sampling errors may arise as a result of errors in the reporting, recording or processing of the data and can occur even if there is a complete enumeration of the population. Non-sampling errors can be introduced through: inadequacies in the questionnaire; non-response; inaccurate reporting by respondents; errors in the application of survey procedures; incorrect recording of answers; and errors in data entry and processing.

3. It is difficult to measure the size of the non-sampling errors and the extent of these errors could vary considerably in significance from survey to survey, and from question to question. However, every effort is made in the design of the survey and development of survey procedures to minimise the effect of these errors.

Sampling errors

4. Sampling error is the error which occurs by chance because the data were only obtained from a sample, not the entire population.

Standard error of estimates

5. One measure of the variability of estimates which occurs as a result of surveying only a sample of the population is the *standard error* (SE). There are about two chances in three that a survey estimate is within one standard error of the figure that would have been obtained if all persons had been included and about nineteen chances in twenty that it is within two standard errors. That is, there are 19 chances in 20 that the true estimate is in the range—

$$X - 2 \times SE(X) \text{ to } X + 2 \times SE(X)$$

(Where X is the estimate)

The standard error of an estimate can be obtained from Table A. Linear interpolation should be used to calculate the standard error of estimates falling between the sizes of estimates listed in the table (see example below Table A).

6. In the tables in this publication, only estimates with relative standard errors of 25 per cent or less, and percentages based on such estimates, are considered sufficiently reliable for most purposes. However, estimates and percentages with larger relative standard errors have been included and are preceded by an asterisk (e.g. * 3.4) to indicate they are subject to high standard errors and should be used with caution.

Relative standard errors

7. The standard error can also be expressed as a percentage of the estimate and this is known as the *relative standard error* (RSE). The RSE is determined by dividing the standard error of an estimate $SE(X)$ by the estimate X and expressing it as a percentage. That is,

$$RSE(X) = \frac{SE(X) \times 100}{X}$$

(where X is the estimate)

8. The look up list on the following page provides a guide for the calculation of standard errors and relative standard errors for a range of statistics.

METHODS FOR CALCULATING THE STANDARD ERRORS FOR SELECTED ESTIMATES

Note: The methods described below refer to the calculation of standard errors for NSW estimates. Standard errors of ACT estimates should be calculated from Table C, using column 2 (from September 1992) instead of Table A and column 3 (Monthly movements for December 1992–January 1993 onwards) instead of Table B.

<i>Measure of reliability to be determined</i>	<i>Method</i>
Standard errors of estimates of employed persons.	Determine the SE from Table A directly.
Standard errors of estimates of unemployed persons.	Multiply the SE from Table A by 1.06.
Standard errors of estimates of persons not in the labour force.	Multiply the SE from Table A by 1.1.
Standard errors of rates (e.g. the unemployment rate which is based on the number of unemployed persons expressed as a percentage of the number of persons in the labour force).	Determine the RSE of the numerator (X) and the denominator (Y) then apply the following formula. $RSE(X/Y) = \sqrt{[RSE(X)]^2 - [RSE(Y)]^2}$
Standard error of average duration of unemployment.	Determine the RSE for the number of persons on which the average is based and multiply this by 1.3.
Standard error of median duration of unemployment.	Determine the RSE for the number of persons on which the average is based and multiply this by 2.0.
Standard error of monthly movements.	Using Table B, look up the SE of the larger estimate.
Standard error of quarterly movements.	Determine the standard error of the larger estimate (using Table A) and multiply this by 1.11.
Standard error of annual movements.	Determine the standard error of the larger estimate (using Table A) and multiply this by 1.3.

Linear interpolation

Linear interpolation is used to determine the standard error of an estimate which falls between two values listed in the *size of estimate* column in Tables A or B. Linear interpolation is best described using an example. In August 1994, there were 611,700 (X_e) employed persons working part-time in New South Wales. This estimate falls between the values 500,000 (X_l) and 1,000,000 (X_u) in Table A.

2. The standard error of the estimate is determined as follows.

$$\begin{aligned} \text{Firstly, calculate } F &= \frac{X_e - X_l}{X_u - X_l} \\ &= \frac{611,700 - 500,000}{1,000,000 - 500,000} \\ &= 0.22 \end{aligned}$$

3. Secondly, calculate the standard error of the estimate, $SE(X_e)$ thus,

$$\begin{aligned} SE(X_e) &= SE(X_l) + (F \times [SE(X_u) - SE(X_l)]) \\ &= 8,800 + (0.22 \times [11,300 - 8,800]) \\ &= 9,350 \end{aligned}$$

4. Therefore the standard error of the number of employed persons in August 1994 working part-time in New South Wales (611,700) is 9,350.

TABLE A. STANDARD ERRORS OF ESTIMATES, REGIONS OF NSW FROM SEPTEMBER 1992 (a)

Size of estimate	Regions in Sydney (MSR)							
	NSW: Sydney (MSR):	Inner Sydney and Inner Western Sydney (SRs)	Inner Sydney (SR)	Eastern Suburbs (SR)	St George-Sutherland (SR)	Canterbury-Bankstown (SR)	Fairfield-Liverpool and Outer South Western Sydney (SRs)	Fairfield-Liverpool (SR)
	Balance of NSW (MSR)							
500	420	340	330	300	300	280	330	290
1,000	590	500	480	430	430	410	470	410
3,000	1,000	890	860	770	780	740	850	750
5,000	1,300	1,150	1,150	1,000	1,050	970	1,100	980
10,000	1,750	1,700	1,650	1,500	1,500	1,400	1,650	1,450
20,000	2,400	2,450	2,450	2,200	2,200	2,100	2,350	2,100
50,000	3,550	4,050	4,050	3,650	3,700	3,500	3,850	3,500
100,000	4,750	5,900	6,000	5,400	5,500	5,200	5,600	5,200
200,000	6,200	8,600	8,900	8,000	8,100	7,700	8,200	7,700
300,000	7,300	10,700	11,300	10,100	10,200	9,700	10,200	9,800
500,000	8,800	14,200	15,200	13,600	13,800	13,000	13,500	13,100
1,000,000	11,300							
2,000,000	14,300							
5,000,000	19,300							

Size of estimate	Regions in Sydney (MSR)—continued						
	Central Western Sydney (SR)	Outer Western Sydney (SR)	Blacktown-Baulkham Hills (SR)	Lower Northern Sydney (SR)	Hornsby-Ku-ring-gai (SR)	Northern Beaches (SR)	Gosford-Wyong (SR)
	500	300	310	270	360	320	250
1,000	440	450	390	520	460	360	470
3,000	790	820	700	940	830	650	850
5,000	1,050	1,100	920	1,250	1,100	860	1,150
10,000	1,500	1,550	1,350	1,800	1,600	1,250	1,650
20,000	2,250	2,300	1,950	2,650	2,350	1,850	2,400
50,000	3,750	3,850	3,300	4,450	3,900	3,100	4,050
100,000	5,500	5,700	4,850	6,500	5,800	4,550	6,000
200,000	8,200	8,500	7,200	9,700	8,600	6,800	8,900
300,000	10,300	10,700	9,100	12,300	10,900	8,500	11,200

Size of estimate	Regions in Balance of NSW (MSR)							
	Hunter (SR)	Newcastle (SRS)	Illawarra and South Eastern (SRs)	Illawarra (SR)	Wollongong (SRS)	Richmond-Tweed and Mid-North Coast (SRs)	Northern, Far West-North Western and Central West (SRs)	Murray-Murrumbidgee (SR)
	500	350	330	330	310	270	370	360
1,000	500	480	480	450	390	530	520	520
3,000	900	870	870	810	710	950	940	940
5,000	1,200	1,150	1,150	1,050	940	1,250	1,250	1,250
10,000	1,700	1,650	1,650	1,550	1,350	1,850	1,800	1,800
20,000	2,500	2,450	2,400	2,250	2,000	2,700	2,650	2,650
50,000	4,100	4,100	3,950	3,700	3,350	4,500	4,450	4,400
100,000	6,000	6,000	5,700	5,400	4,950	6,600	6,600	6,500
200,000	8,700	9,000	8,400	7,800	7,300	9,900	9,800	9,700
300,000	10,900	11,300	10,400	9,800	9,300	12,400	12,300	12,300

(a) For standard errors for earlier periods, see previous issues of this publication.

TABLE B. STANDARD ERRORS OF MONTH TO MONTH MOVEMENTS, REGIONS OF NSW
FROM DECEMBER 1992–JANUARY 1993 ONWARDS (a)

Size of estimate	Regions in Sydney (MSR)							
	NSW; Sydney (MSR): Balance of NSW (MSR)	Inner Sydney and Inner Western Sydney (SRs)	Inner Sydney (SR)	Eastern Suburbs (SR)	St George–Sutherland (SR)	Canterbury–Bankstown (SR)	Fairfield–Liverpool and Outer South Western Sydney (SRs)	Fairfield–Liverpool (SR)
500	540	330	270	260	240	240	290	220
1,000	690	440	360	350	330	330	390	300
3,000	1,050	700	600	580	540	540	630	500
5,000	1,250	870	750	730	680	680	780	630
10,000	1,600	1,150	1,050	990	930	930	1,050	860
20,000	2,050	1,550	1,400	1,350	1,250	1,250	1,400	1,150
50,000	2,900	2,300	2,150	2,050	1,950	1,900	2,050	1,750
100,000	3,700	3,100	2,900	2,800	2,650	2,650	2,800	2,400
200,000	4,750	4,200	4,000	3,850	3,600	3,600	3,750	3,300
300,000	5,500	5,000	4,800	4,600	4,350	4,300	4,400	4,400
500,000	6,700	6,200	6,000	5,800	5,400	5,400	5,500	5,000
1,000,000	8,600							
2,000,000	11,100							
5,000,000	15,500							

Size of estimate	Regions in Sydney (MSR)—continued						
	Central Western Sydney (SR)	Outer Western Sydney (SR)	Blacktown–Baulkham Hills (SR)	Lower Northern Sydney (SR)	Hornsby–Ku-ring-gai (SR)	Northern Beaches (SR)	Gosford–Wyong (SR)
500	220	240	250	290	230	210	270
1,000	300	330	340	400	310	280	380
3,000	490	540	560	660	510	470	620
5,000	610	680	700	830	640	590	780
10,000	840	940	960	1,150	870	800	1,050
20,000	1,150	1,300	1,300	1,550	1,200	1,100	1,450
50,000	1,750	1,950	2,000	2,350	1,800	1,650	2,200
100,000	2,350	2,650	2,700	3,200	2,450	2,250	3,000
200,000	3,250	3,600	3,700	4,400	3,400	3,100	4,100
300,000	3,900	4,350	4,450	5,300	4,050	3,750	4,950

Size of estimate	Regions in Balance of NSW (MSR)							
	Hunter (SR)	Newcastle (SRS)	Illawarra and South Eastern (SRs)	Illawarra (SR)	Wollongong (SRS)	Richmond–Tweed and Mid-North Coast (SRs)	Northern, Far West–North Western and Central West (SRs)	Murray–Murrumbidgee (SR)
500	320	280	340	340	260	300	340	290
1,000	430	390	460	460	350	420	470	400
3,000	690	640	740	730	580	680	760	660
5,000	860	800	910	910	730	860	960	830
10,000	1,150	1,100	1,250	1,200	990	1,200	1,300	1,150
20,000	1,550	1,500	1,650	1,650	1,350	1,600	1,800	1,550
50,000	2,300	2,250	2,450	2,400	2,050	2,450	2,750	2,350
100,000	3,100	3,100	3,250	3,250	2,800	3,350	3,750	3,200
200,000	4,150	4,250	4,400	4,350	3,850	4,550	5,100	4,350
300,000	4,900	5,100	5,200	5,200	4,600	5,500	6,100	5,200

(a) For standard errors for earlier periods, see previous issues of this publication.

TABLE C. STANDARD ERRORS OF ESTIMATES, ACT

<i>Size of estimate</i>	<i>From September 1992 (a)</i>	<i>Monthly movements for December 1992– January 1993 onwards (a)</i>
500	180	150
1,000	240	220
3,000	390	320
5,000	490	390
10,000	640	500
20,000	840	640
50,000	1,200	900
100,000	1,550	1,150
200,000	1,950	1,500
300,000	2,250	1,750

(a) For standard errors for earlier periods, see *The Labour Force, Australia* (6203.0)

APPENDIX. REGIONS OF NSW AND THEIR STATISTICAL LOCAL AREAS

SYDNEY (MSR)**Inner Sydney and Inner Western Sydney (SRs)**

Ashfield (A)
 Botany (A)
 Burwood (A)
 Concord (A)
 Drummoyne (A)
 Leichhardt (A)
 Marrickville (A)
 South Sydney (C)
 Strathfield (A)
 Sydney (C) — Inner
 Sydney (C) — Remainder

Inner Sydney (SR)

Botany (A)
 Leichhardt (A)
 Marrickville (A)
 South Sydney (C)
 Sydney (C) — Inner
 Sydney (C) — Remainder

Eastern Suburbs (SR)

Randwick (C)
 Waverley (A)
 Woollahra (A)

St George—Sutherland (SR)

Hurstville (C)
 Kogarah (A)
 Rockdale (A)
 Sutherland Shire (A)

Canterbury—Bankstown (SR)

Bankstown (C)
 Canterbury (A)

Fairfield—Liverpool and**Outer South Western Sydney (SRs)**

Camden (A)
 Campbelltown (C)
 Fairfield (C)
 Liverpool (C)
 Wollondilly (A)

Fairfield—Liverpool (SR)

Fairfield (C)
 Liverpool (C)

Central Western Sydney (SR)

Auburn (A)
 Holroyd (C)
 Parramatta (C)

Outer Western Sydney (SR)

Blue Mountains (C)
 Hawkesbury (C)
 Penrith (C)

Blacktown—Baulkham Hills (SR)

Baulkham Hills (A)
 Blacktown (C)

Lower Northern Sydney (SR)

Hunter's Hill (A)
 Lane Cove (A)
 Mosman (A)
 North Sydney (A)
 Ryde (C)
 Willoughby (C)

Hornsby—Ku-ring-gai (SR)

Hornsby (A)
 Ku-ring-gai (A)

Northern Beaches (SR) (a)

Manly (A)
 Pittwater (A)
 Warringah (A)

Gosford—Wyong (SR)

Gosford (C)
 Wyong (A)

BALANCE OF NSW (MSR) (b)**Hunter (SR)**

Cessnock (C)
 Dungog (A)
 Gloucester (A)
 Great Lakes (A)
 Lake Macquarie (C)
 Maitland (C)
 Merriwa (A)
 Murrumbidgee (A)
 Muswellbrook (A)
 Newcastle (C) — Inner
 Newcastle (C) — Remainder
 Port Stephens (A)
 Scone (A)
 Singleton (A)

Newcastle (SRs)

Cessnock (C)
 Lake Macquarie (C)
 Maitland (C)
 Newcastle (C) — Inner
 Newcastle (C) — Remainder
 Port Stephens (A)

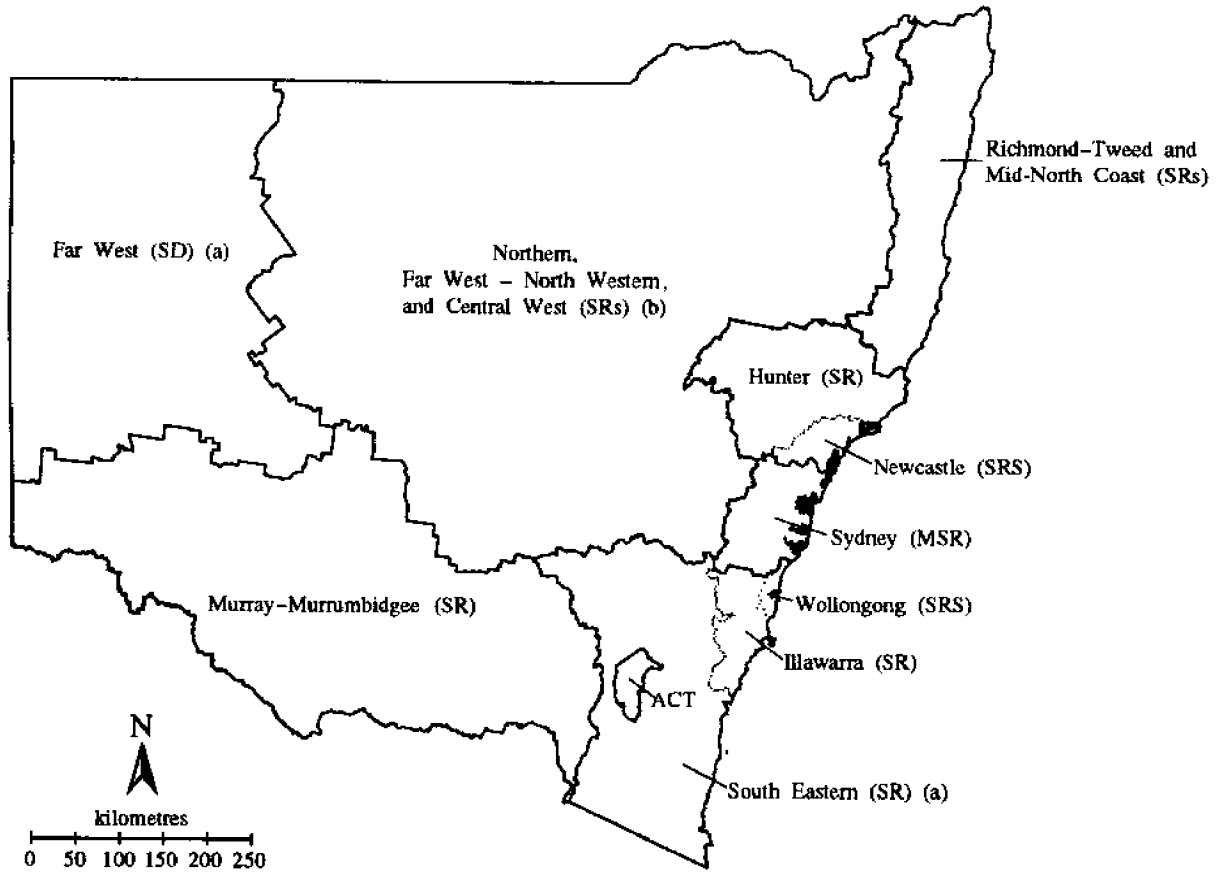
Illawarra and South Eastern (SRs)

Bega Valley (A)
 Bombala (A)
 Boorowa (A)
 Cooma—Monaro (A)
 Crookwell (A)
 Eurobodalla (A)
 Goulburn (C)
 Gunning (A)
 Harden (A)
 Kiama (A)
 Mulwaree (A)
 Queanbeyan (C)
 Shellharbour (A)
 Shoalhaven (C)
 Snowy River (A)
 Tallaganda (A)
 Wingcarribee (A)

- Wollongong (C)
 Yarrawlunla (A)
 Yass (A)
 Young (A)
- Illawarra (SR)**
 Kiama (A)
 Shellharbour (A)
 Shoalhaven (C)
 Wingecarribee (A)
 Wollongong (C)
- Wollongong (SRS)**
 Kiama (A)
 Shellharbour (A)
 Wollongong (C)
- Richmond–Tweed and Mid-North Coast (SRs)**
 Ballina (A)
 Bellingen (A)
 Byron (A)
 Casino (A)
 Coffs Harbour (C)
 Copmanhurst (A)
 Grafton (C)
 Greater Taree (C)
 Hastings (A)
 Kempsey (A)
 Kyogle (A)
 Lismore (C)
 Lord Howe Island
 Maclean (A)
 Nambucca (A)
 Nymboida (A)
 Richmond River (A)
 Tweed (A) — Part A
 Tweed (A) — Part B
 Ulmarra (A)
- Northern, Far West–North Western and Central West (SRs) (b)**
 Armidale (C)
 Barraba (A)
 Bathurst (C)
 Bingara (A)
 Bland (A)
 Blayney (A) — Part A
 Blayney (A) — Part B
 Bogan (A)
 Bourke (A)
 Brewarrina (A)
 Cabonne (A) — Part A
 Cabonne (A) — Part B
 Cabonne (A) — Part C
 Cobar (A)
 Coolah (A)
 Coonabarabran (A)
 Coonamble (A)
 Cowra (A)
 Dubbo (C)
 Dumaresq (A)
 Evans (A) — Part A
 Evans (A) — Part B
- Forbes (A)
 Gilgandra (A)
 Glen Innes (A)
 Greater Lithgow (C)
 Gunnedah (A)
 Guyra (A)
 Inverell (A) — Part A
 Inverell (A) — Part B
 Lachlan (A)
 Manilla (A)
 Moree Plains (A)
 Mudgee (A)
 Narrabri (A)
 Narromine (A)
 Nundle (A)
 Oberon (A)
 Orange (C)
 Parkes (A)
 Parry (A)
 Quirindi (A)
 Rylstone (A)
 Severn (A)
 Tamworth (C)
 Tenterfield (A)
 Uralla (A)
 Walcha (A)
 Walgett (A)
 Warren (A)
 Weddin (A)
 Wellington (A)
 Yallaroi (A)
- Murray–Murrumbidgee (SR)**
 Albury (C)
 Balranald (A)
 Berrigan (A)
 Carrathool (A)
 Conargo (A)
 Coolamon (A)
 Cootamundra (A)
 Corowa (A)
 Culcairn (A)
 Deniliquin (A)
 Griffith (C)
 Gundagai (A)
 Hay (A)
 Holbrook (A)
 Hume (A)
 Jerilderie (A)
 Junee (A)
 Lecton (A)
 Lockhart (A)
 Murray (A)
 Murrumbidgee (A)
 Narrandera (A)
 Temora (A)
 Tumbarumba (A)
 Tumut (A)
 Urana (A)
 Wagga Wagga (C)
 Wakool (A)
 Wentworth (A)
 Windouran (A)

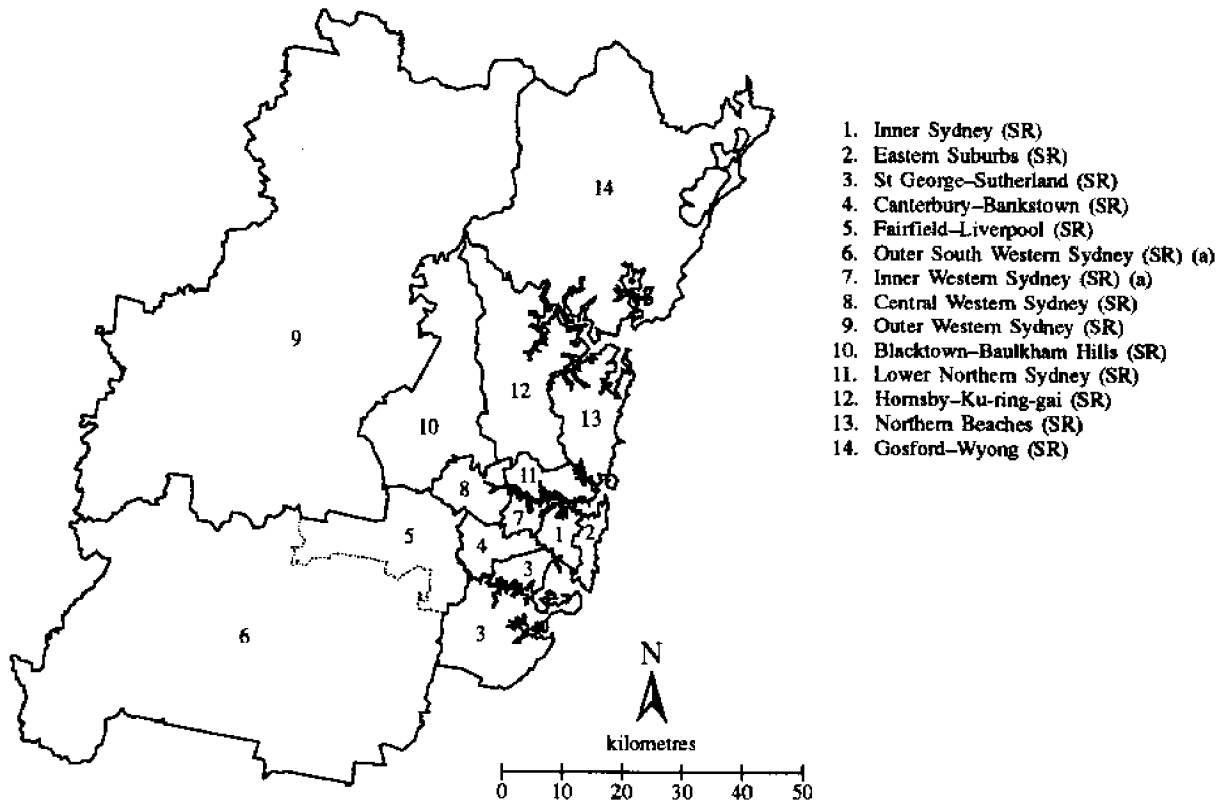
(a) Previously Manly–Warringah (SR). (b) The statistical local areas which comprise Far West (SD)—Broken Hill (C), Central Darling (A), and Unincorporated Far West—are included in Balance of NSW (MSR), but excluded from Northern, Far West–North Western and Central West (SRs).

REGIONS OF NSW



(a) Not published separately. (b) Excludes Far West (SD)

REGIONS OF SYDNEY (MSR)



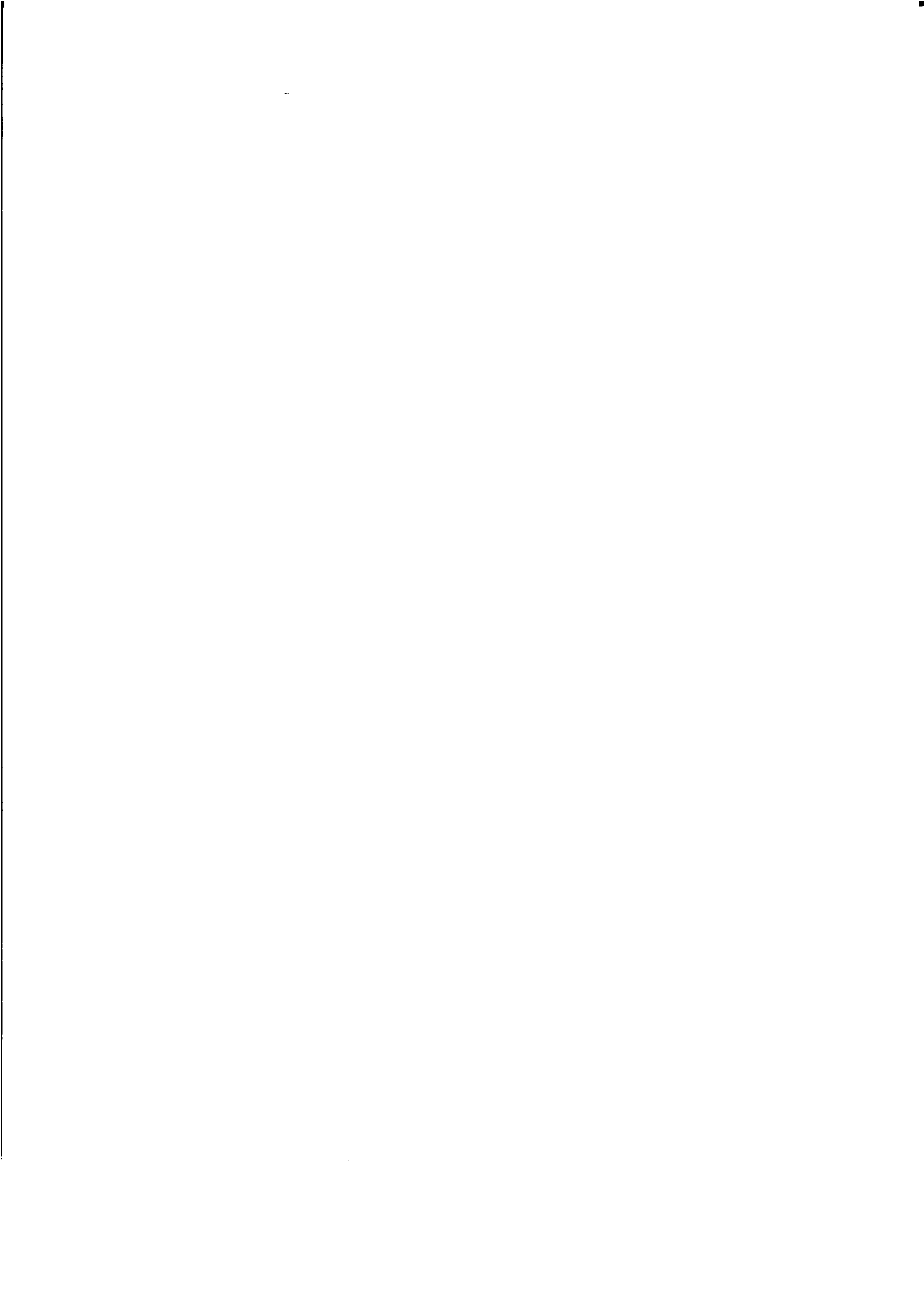
(a) Not published separately.

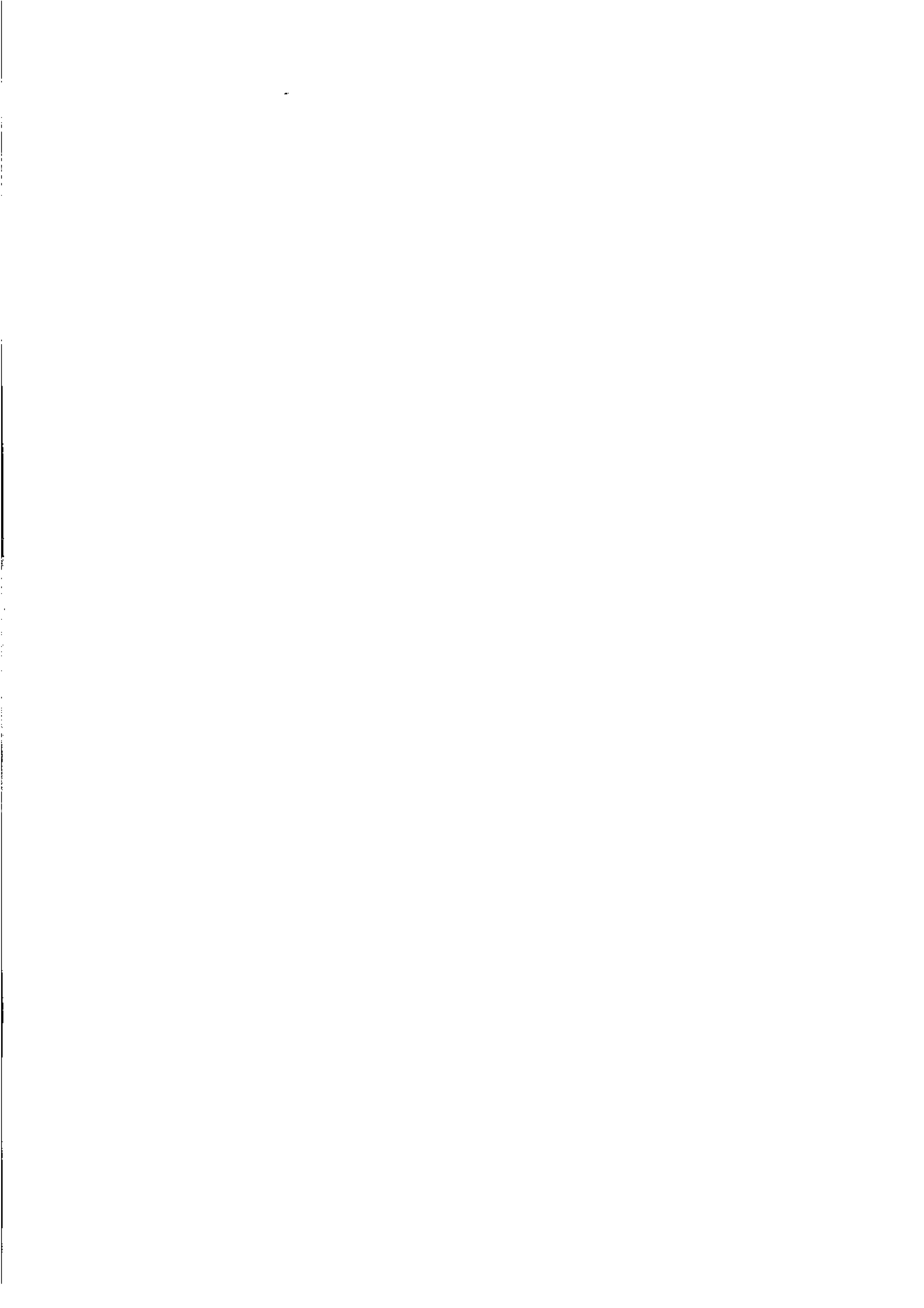
LABOUR FORCE SUPPLEMENTARY TOPICS

Although emphasis in the population survey is placed on the regular collection of data on demographic and labour force characteristics, supplementary and special surveys of particular aspects of the labour force are carried out from time to time. The results of these surveys on labour force and related topics are published separately as shown below.

<i>Catalogue no.</i>	<i>Title of Publication</i>	<i>Price (a) \$</i>
6206.0	Labour Force Experience, Australia, March 1994	13.00
6209.0	Labour Mobility, Australia, February 1994	13.00
6216.0	Multiple Jobholding, Australia, July 1991	12.50
6220.0	Persons Not in the Labour Force, Australia, September 1993	13.00
6222.0	Job Search Experience of Unemployed Persons, Australia, July 1993	12.70
6224.0	Labour Force Status and Other Characteristics of Families, Australia, June 1993	12.70
6227.0	Transition from Education to Work, Australia, May 1993	12.70
6235.0	Labour Force Status and Educational Attainment, Australia, February 1994	13.00
6238.0	Retirement and Retirement Intentions, Australia, October 1992	12.70
6243.0	Career Paths of Persons with Trade Qualifications, Australia, 1989	12.50
6245.0	Successful and Unsuccessful Job Search Experience, Australia, July 1992	12.50
6250.0	Labour Force Status and Other Characteristics of Migrants, Australia, September 1993	13.00
0254.0	Career Experience, Australia, February 1993	12.70
6264.0	Persons who had re-entered the Labour Force, Australia, May 1993	12.70
6265.0	Underemployed Workers, Australia, May 1991	11.50
6267.0	Persons Who Have Left the Labour Force, Australia, April 1991	11.50
6272.0	Participation in Education, Australia, September 1993	13.00
6275.0	Persons Employed at Home Australia, March 1992	12.50
6277.0	Career Paths of Qualified Nurses, Australia, March to July 1989	12.50
6278.0	How Workers Get Their Training, Australia, 1989	12.50
6310.0	Weekly Earnings of Employees (Distribution), Australia, August 1993	13.00
6317.0	Annual and Long Service Leave Taken, Australia, May 1988 to April 1989	11.50
6319.0	Superannuation, Australia, November 1993	13.00
6325.0	Trade Union Members, Australia, August 1992	12.70
6334.0	Employment Benefits, Australia, August 1992	12.50
6342.0	Working Arrangements, Australia, August 1993	13.00

(a) Prices quoted are subject to revision.







For more information ...

The ABS publishes a wide range of statistics and other information on Australia's economic and social conditions. Details of what is available in various publications and other products can be found in the *ABS Catalogue of Publications and Products* available at all ABS Offices (see below for contact details).

Information Consultancy Service

Information tailored to special needs of clients can be obtained from the Information Consultancy Service available at ABS Offices (see Information Inquiries below for contact details).

National Dial-a-Statistic Line

0055 86 400

This number gives you 24 hour access, 365 days a year for a range of statistics.

Electronic Data Services

A large range of data is available via on-line services, diskette, magnetic tape, tape cartridge and CD ROM. For more details about our electronic data services, contact any ABS Office (see Information Inquiries below for contact details).

Bookshops and Subscriptions

There are over 500 titles of various publications available from ABS bookshops in all ABS Offices (see below Bookshop Sales for contact details). The ABS also provides a subscription service through which nominated publications are provided by mail on a regular basis at no additional cost (telephone Publications Subscription Service toll free on 008 02 0608 Australia wide).

Sales and Inquiries

Regional Offices	Information Inquiries	Bookshop Sales
SYDNEY	(02) 268 4611	(02) 268 4620
MELBOURNE	(03) 615 7000	(03) 615 7829
BRISBANE	(07) 222 6351	(07) 222 6350
PERTH	(09) 360 5140	(09) 360 5307
ADELAIDE	(08) 237 7100	(08) 237 7582
HOBART	(002) 205 800	(002) 205 800
CANBERRA	(06) 207 0326	(06) 207 0326
DARWIN	(089) 432 111	(089) 432 111
National Office ACT	(06) 252 6007	008 020 608



Information Services, ABS, GPO Box 796, Sydney NSW 2001
or any ABS office



2620110008949

ISSN 1322-0179